

A man with short brown hair and a light beard is sitting on a forklift. He is wearing a blue and black work suit. The background is a warehouse with blue metal shelving units. The lighting is bright, highlighting the man and the forklift.

ON WORKWEAR

BARRON

SWITCH YOUR BRAND ON

SWITCH YOUR BRAND ON

At BARRON, we believe in providing the best products for your brand to tell its story. That's why when it comes to quality, service and price, we're always able to switch your brand **ON**.

The BARRON Philosophy:

ON is up.
ON is right now.
ON is upbeat.
ON is can-do.
ON works.
ON solves.
ON builds.
ON serves.

"ON" is your brand.

Switched ON.

BARRON. Switch your brand ON.

Barron is strictly distributed via authorized distributors namely, promotional and event companies, as well as advertising agencies and independent resellers.

* All brands and logos, other than those of Barron, depicted in this brochure are used for the purpose of visual presentation only and remain the sole property of the relevant companies, organisations to which they belong.



02 SERVICE & BEAUTY

Kelly Tunic and Camilla Tunic	3 - 4
Ivy Tunic and Ladies Claire Jacket	5 - 6
Iris Pinafore and Daisy Dress	7 - 8
Ladies Poly Cotton House Coat	09
Ladies Poly Cotton 3 Piece Set	10
Multifunctional Lab Coat	11
Theatre Cap	11



Ladies Core Scrub Top	12
Ladies Core Scrub Pants	12
Men's Core Scrub Top	13
Men's Core Scrub Pants	13

14 CHEF WEAR

Ladies Savona Chef Jacket	15
Savona Long Sleeve Chef Jacket	16
Savona Short Sleeve Chef Jacket	17
Pescara chef Jacket	18
Siena Chef Jacket	19
Veneto Chef Jacket	20
Roma Chef Jacket	21
Figo Utility Top	22
Chef Baggy Pants	23
Barron Food Safety Jacket	24
Barron Food Safety Pants	24
Deli Cap	25
Mushroom Hat	25
Chef Beanie	25
Skull Cap	26



Tapered Apron	26
Bistro Apron and Bib Apron	27
Non Woven Apron	28
Non Woven Bib	28
Barron Occupational Shoe	29
Barron Shova Deli Boot & Clog	29
Men's Maitre D Lounge Shirt	30
Ladies Maitre D Lounge Shirt	30
Men's Barista Lounge Shirt	31
Ladies Barista Lounge Shirt	31

32 HIGH VISIBILITY WORKWEAR

Highway Waistcoat	33
Basic Safety Bib	34
Mesh Bib	34
Contract PVC Waist Coat	35
Contract Mesh Bib	36
Contract Solid Bib	36
Contractor PVC Mesh Waistcoat	37
Contract Waistcoat	37
Surge Gopher	38
Raid Gopher	39
Concord Long Sleeve Golf Shirt	39
Bridgeport Gopher	40
Navigator Gopher	40
Patrol Gopher	41
Transit Long Sleeve Gopher	41
Tactical Gopher Long Sleeve	42
Tactical Gopher Short Sleeve	42
Tailgate Gopher	43
150g Poly Safety T-Shirt with Tape	43
Contract Sleeveless Reflective Vest	44
Contract Long Sleeve Reflective Vest	44
Force Jacket	45



Shaft Safety Shirt Long Sleeve	46
Quarry Fleece	46
Hawk Jacket	47
Barricade Jacket	48
Commuter Jacket	49
Venture Padded Jacket	49
Fleet Jacket	50
Junction Jacket	51
Contractor 3-in-1 Jacket	52
Blaze 4-in-1 Jacket	53
Beacon Jacket	54
Convoy Jacket	54
Rain Suit	55
Premier Conti Jacket with Reflective Tape	56
Premier Conti Trousers with Reflective Tape	56
Contract Safety Sun Hat	57
7 Panel Hazard Cap	57
Hi-Vis Floppy Hat	57

58 PROTECTIVE OUTERWEAR

Hi-Vis Construction Conti Suit	59
Contract Poly Cotton Conti Suit	60
Contract Poly Cotton Suit with Reflective Tape	60
Barron Budget Poly Cotton Conti Suit	61
Barron Budget Poly Cotton Conti with Reflective Tape	62
Barron Budget Two-Tone Conti Jacket	63
Barron Budget Poly Cotton/ Cotton Conti Trousers	64
Barron Budget 100% Cotton Conti Suit	65
Barron Budget 100% Cotton Conti Suit with Reflective	66
Budget Boiler Suit	67
Barron Supreme Poly Cotton Conti Suit	68
Barron Supreme 100% Cotton Conti Suit	69
Barron D59 (SABS) Flame and Acid Retardant Conti Jacket and Trousers	70



Barron Acid Resistant Poly Cotton Conti Suit	71
How to Choose your Conti	72
Sewing on Reflective Tape	73
Barron Food Safety Jacket and Pants	74
Multifunctional Lab Coat	75
Barron Poly Cotton Dust Coat	76
Ladies Poly Cotton House Coat	77
Ladies Poly Cotton 3 Piece set	78
Iris Pinafore	78
Daisy Dress	79
Ground Zero Jacket	80
Rain Suit	81
Contract Rain Suit	82
Contract Rain Coat	82
Contract Reflective Rain Suit	83

ON INDEX

84 SECURITY

Security Jersey	85
Contract Combat Shirt	86
Contract Combat Trousers	86
Fidelity Combat Shirt and Trousers	87
Pilot Shirt	88
Mens Statement Classic Pants	88
Castro Cap	88
Ladies Basic Poly Cotton Blouse	89



Ladies Basic Cardigan	89
Ladies Statement Skirt	89
Barricade Jacket	90
Beacon Jacket	91
Barron Protector Boot	91

92 FOOTWEAR

Barron Shosholozo Gumboot	93
Barron Shova General Purpose Gumboot	94
Barron Stimela XP Gumboot	95
Barron Shova Clog	96
Barron Shova Deli Gmboot	96
Barron Occupational Shoe	97
Barron Canvas Lace up Shoe	98
Barron Defender Safety Boot	99



Barron Armour Safety Shoe	100
Barron Protector Boot	101
Barron Chelsea Safety Boot	101

102 ACCESSORIES

Hard Hats and Chin Straps	103
Dust Masks-SABS Approved - FFP2 with Valve	104
Dust Masks-SABS Approved	104
Work Wear Belt	104
Metal Pocket Torch with LED Lights	105
Hard Hat Shaped Stress Ball	105
Desk Trash Bin	105
Tourista Backpack	106
High Vis Backpack	106
Neon Safety Backpack	106
Multifunctional First Aid Kit	107
16 Piece First Aid Kit in Eva Case	107
Waterproof First Aid Kit in Plastic Case	107



Auto Emergency First Aid Kit	107
Retractable Camping Lamp with 6 LED light	108
21 Piece Tool Set in Plastic Case	108
Emergency Auto Tool Kit	108
Security Torch	109
Head Lam with 8 COD LED Lights	109
Waterproof LED Flashlight	109
LED folding Tec Tool	109

110 BOTTOMS

Barron Work Wear Jeans	111
Mens Original and Retro Jeans	112
Rogue Shorts	113
Bundu Denim Shorts	113
Cargo and Brixton Pants	114
Poly Cotton and Cotton Chinos	115
Mens Statement Classic Pants	116



Ladies Statement Skirt	116
Ladies Statement Stretch Pants	117
Ladies Eve Stretch Jeans	117

118 OUTDOOR & LEISURE

Mens Outback Shirt	119
Ladies Outback Blouse	119
Mens and Ladies Plain Bush Shirt	120
Mens and Ladies Bush Long Sleeve Shirt	121
Two Tone Bush Shirt	122
Ladies Trail Blouse	123
Mens Trail Shirt	123
Delta Shirt	124
Maverick Shirt and Fishing Jacket	125
145g Barron Crew Neck T-shirt	126



145g Long Sleeve T-shirt	126
135g Barron Polyester T-shirt	127
135g Barron Long Sleeve Polyester T-shirt	127
Ladies and Mens 175g Pique Knit Gopher	128



ON

SERVICE & BEAUTY

In industries where the work can get a little messy, cleanliness is vital and you need Workwear to portray a lasting impression. Our range has everything you need to keep the dirt off, and Switch your brand **ON**.

TU-KEL - KELLY TUNIC

Features: Short sleeves • Side slits • Front and back waist darts make this tunic stand out • Front patch pockets • Welt pocket on the chest
• Tonal buttons on centre front

Fabrication: 170g 100% Polyester

Branding:

E SP HP

Kelly Tunic - Regular fit									
Sizes	XS	S	M	L	XL	2XL	3XL	4XL	5XL
1/2 Chest (cm)	41	45	49	53	57	61	65	69	73



Chest pocket



Side pocket



Back view



Navy



Black



Khaki



White



Black



Navy



Silver



White

TU-CAM - CAMILLA TUNIC

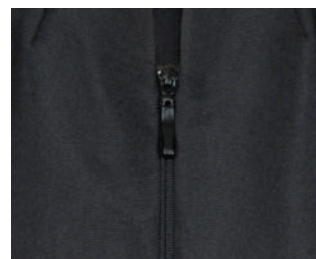
Features: Short sleeves • Feminine cut with front princess panels • Shaped waist • Side slits • Back waist darts • Darts on the neckline • Side patch pockets on the hem • Open end nylon zip

Fabrication: Poly stretch fabric

Branding:

E **SP** **HP**

Camilla Tunic - Regular Fit									
Sizes	XS	S	M	L	XL	2XL	3XL	4XL	5XL
1/2 Chest (cm)	41	45	49	53	57	61	65	69	73



Self colour zip-puller



White/Navy



Navy/White



Black/Red



Black/White



Rectangular buttons

TU-IVY - IVY TUNIC

Features: Short sleeves • Asymmetrical tunic • Mandarin collar • Buttons and side slits • Front and back waist darts
Fabrication: 175g 100% Polyester

Branding:

E SP HP

Ivy Tunic - Regular Fit									
Sizes	XS	S	M	L	XL	2XL	3XL	4XL	5XL
1/2 Chest (cm)	41	45	49	53	57	61	65	69	73



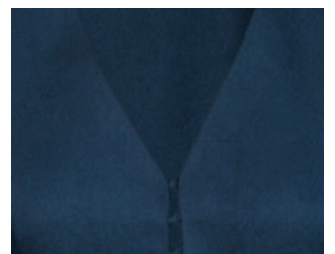
Navy



Black



Curved hem



V-shaped neckline

CL-CT - LADIES CLAIRE JACKET

Features: Princess panels • Back waist darts • Feminine fit • Hook and bar closure at centre front • V-shaped neckline • Pockets at the hem • Side slits • Perfect for any body shape • Armholes finished off with inner self-fabric flat binding

Fabrication: 175g 100% Polyester

Branding:

E

Ladies Claire Jacket - Tapered Fit									
Sizes	XS	S	M	L	XL	2XL	3XL	4XL	5XL
1/2 Chest (cm)	41	45	49	53	57	61	65	69	73

PIN-IR - IRIS PINAFORE

Features: Perfect pinafore for a variety of industries • Adjustable waist tabs • Self-fabric binding on the edges • Kangaroo pocket divided into multiple compartments

Fabrication: 210g 80/20 Poly cotton

Branding:

E SP HP

Iris Pinafore - Regular Fit				
Sizes	S/M	L/XL	2XL/3XL	4XL/5XL
1/2 Chest (cm)	38	48	58	68



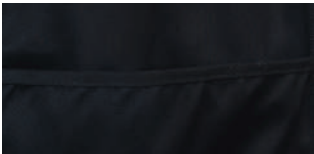
Adjustable waist tab



Binding on edges



Waist tab detail



Kangaroo pocket



Black



Navy



Khaki



White





DS-DAI - DAISY DRESS

Features: Notches on neckline • Grown on button stand • Princess panels • Slanted pockets • Comfortable for any work • Belt loop and button on the shoulders for detachable epaulettes • Epaulettes not supplied • Contrast piping on the neck, sleeves and pockets

Fabrication: 175g 100% Polyester

Branding:

E SP HP

Daisy Dress - Regular Fit									
Sizes	XS	S	M	L	XL	2XL	3XL	4XL	5XL
1/2 Chest (cm)	41	45	49	53	57	61	65	69	73



Pocket trim



Self fabric loop



Button at shoulders



Contrast piping detail



Black/White



Navy/White



Khaki/Black



White/Navy

CS-HOU - LADIES POLY COTTON HOUSE COAT

Features: Bust darts • Perfect outerwear to protect ladies' clothes while cleaning or cooking • Grown on button stand with buttons • Two front patch pockets

Fabrication: 210g 80/20 Poly Cotton

Branding:

E SP HP

Ladies Poly Cotton House Coat - Regular Fit									
Sizes	XS	S	M	L	XL	2XL	3XL	4XL	5XL
1/2 Chest (cm)	43	47	51	55	59	63	67	71	75



Navy



Royal



Red



Detail



Detail





Black/White



Navy/White



Khaki/Animal Print



CS-SET - LADIES POLY COTTON 3 PIECE SET

Features: Bust darts • Three piece house coat set • Set includes a dress, apron and head scarf • The dress is adapted from our new Ladies Poly Cotton House Coat • Contrast reverse collar • Grown on button stand with buttons • Two front patch pockets • Two-tone apron and head scarf

Fabrication: 210g 80/20 Poly Cotton

Branding:

E **SP** **HP**

Ladies Poly Cotton 3 Piece Set - Regular Fit									
Sizes	XS	S	M	L	XL	2XL	3XL	4XL	5XL
1/2 Chest (cm)	43	47	51	55	59	63	67	71	75

LAB-MUL - MULTIFUNCTIONAL LAB COAT

Features: Front pockets on hem • Unisex coat • Perfect for any profession
 • Grown on button stand with buttons • One piece collar • Patch pocket on chest
 • Two back pleats • Laid on waist tab • Single layer back yoke
 • Available in long and short sleeves

Fabrication: 210g Poly Cotton

Branding:

E SP HP

Multifunctional Lab Coat - Tapered Fit									
Sizes	XS	S	M	L	XL	2XL	3XL	4XL	5XL
1/2 Chest (cm)	45	50	55	60	65	70	75	80	85



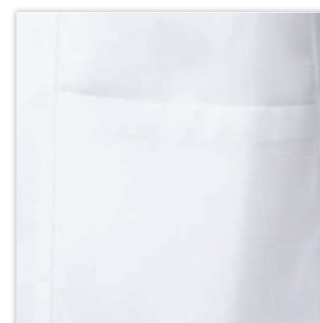
Long sleeve



Short sleeve



Back view



Pocket detail

SC-TC - THEATRE CAP

Features: Self-fabric ties on back • One size fits all
Fabrication: 180g Poly Cotton

Branding:

E SP HP



Ties on back



Dusk Blue



Green



Navy



SC-LCT - LADIES CORE SCRUB TOP

Features: Front V-neck • Long side slits • Front patch pockets • Chest pocket with a pen slot • Princess panels • Set sleeves
Fabrication: 180g Poly Cotton

Branding:

E SP HP

Ladies Core Scrub Top - Comfort Fit									
Sizes	XS	S	M	L	XL	2XL	3XL	4XL	5XL
½ Chest (cm)	45	49	53	57	61	65	69	73	77



Navy



Dusk Blue



Green



Front V-neck

SC-MCT - MENS CORE SCRUB TOP

Features: Front V-neck • Long side slits • Front patch pockets • Chest pocket with a pen slot • Princess panels • Set sleeves
Fabrication: 180g Poly Cotton

Branding:

E SP HP

Mens Core Scrub Top - Comfort Fit								
Sizes	S	M	L	XL	2XL	3XL	4XL	5XL
½ Chest (cm)	55	60	65	70	75	80	85	90



Navy



Dusk Blue



Green



Pocket with pen slot

SC-LCP - LADIES CORE SCRUB PANTS

Features: Comfortable pants to wear around the hospital • Elasticated waistband with draw cord • Front slanted pockets • Single edge stitching on front and back rise and inleg

Fabrication: 180g Poly Cotton

Branding:

E SP HP

Ladies Core Scrub Pants - Regular Fit									
Sizes	XS	S	M	L	XL	2XL	3XL	4XL	5XL
½ Waist (in)	26/28	30/32	34	36/38	40/42	44	46/48	50	52/54
½ Waist (cm)	66-73	74-81	82-89	90-97	98-105	106-113	114-121	122-129	130-138



Navy



Dusk Blue



Green

SC-MCP - MENS CORE SCRUB PANTS

Features: Comfortable pants to wear around the hospital • Elasticated waistband with draw cord • Front slanted pockets • Single edge stitching on front and back rise and inleg

Fabrication: 180g Poly Cotton

Branding:

E SP HP

Mens Core Scrub Pants - Regular Fit								
Sizes	S	M	L	XL	2XL	3XL	4XL	5XL
½ Waist (in)	30/32	34	36/38	40/42	44	46/48	50	52/54
½ Waist (cm)	74-81	82-89	90-97	98-105	106-113	114-121	122-129	130-138



Navy



Dusk Blue



Green



ON

CHEFWEAR

Switch your brand **ON** when you switch your oven on. From prep to plating up at kitchen to the table, our range has got you covered, and there's just something about an apron or a chef's jacket that lets people know you can stand the heat.

LBC-SAV - LADIES LONG SLEEVE SAVONA CHEF JACKET

Features: Double breasted front opening • Turn up cuffs with bartack detail • Front princess seams for a more feminine fit • Thermometer sleeve pocket • Single top-stitched armholes and shoulder seams for added durability • Bartacks at stress points

Fabrication: 190g 80/20 Poly Cotton fabric

Branding:

E

NEW

BARRON Chef - Tapered Fit									
SIZE (CM)	XS	S	M	L	XL	XXL	XXXL	4XL	5XL
1/2 Chest	45	49	53	57	61	65	69	73	77



Black



White



Back view



Thermometer sleeve pocket



Button detail



Turned-up detail



BC-SAV - MENS SAVONA LONG SLEEVE CHEF JACKET

Features: Bar-tacked on all pressure points • Double breasted chef jacket

• Turned-up cuffs • Welted chest pocket • Thermometer sleeve pocket

• Single top-stitched armholes and shoulder seams

• Available in long and short sleeves

Fabrication: 190g 80/20 Poly Cotton fabric

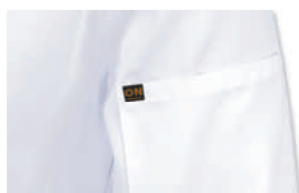
Branding:

E

BARRON Chef - Tapered Fit									
Sizes	XS	S	M	L	XL	2XL	3XL	4XL	5XL
1/2 Chest (cm)	45	50	55	60	65	70	75	80	85



Button detail



Thermometer sleeve pocket



Red



Black



Lime



White



Back view

BC-SAV - SAVONA SHORT SLEEVE CHEF JACKET

Features: Bar-tacked on all pressure points • Double breasted chef jacket

• Turned-up cuffs • Welted chest pocket • Thermometer sleeve pocket

• Single top-stitched armholes and shoulder seams

• Available in long and short sleeves

Fabrication: 190g 80/20 Poly Cotton fabric

Branding:

E

BARRON Chef - Tapered Fit									
Sizes	XS	S	M	L	XL	2XL	3XL	4XL	5XL
1/2 Chest (cm)	45	50	55	60	65	70	75	80	85



Button detail



Thermometer sleeve pocket



Back view



BC-PES - PESCARA CHEF JACKET

Features: Crossover chest design • Pop-in buttons • Thermometer pocket on the sleeve • French cuffs and double top-stitching • Shoulder seams and armholes • Available only in long sleeve • Welted chest pocket with bar tacks • Jacket supplied with both black and white buttons

Fabrication: 225g 65/35 Poly Cotton fabric

Branding:

E

BARRON Chef - Tapered Fit									
Sizes	XS	S	M	L	XL	2XL	3XL	4XL	5XL
1/2 Chest (cm)	45	50	55	60	65	70	75	80	85



Thermometer sleeve pocket



Crossover chest design



White with black buttons



White with white buttons



BC-SIE - SIENA CHEF JACKET

Features: Front and Back side mesh panels for added ventilation • Assymetrical front with concealed zip opening • Turn up cuffs with contrast piping detail • Welted chest pocket • Thermometer sleeve pocket • Contrast piping at front and back panels for a classic look
Fabrication: 65/35 Poly Cotton

NEW

Branding:

E

BARRON Chef - Tapered Fit									
SIZES	XS	S	M	L	XL	XXL	XXXL	4XL	5XL
1/2 CHEST (cm)	45	50	55	60	65	70	75	80	85



Concealed zip opening



Mesh detail



White/Black



Black/White



BC-VEN - VENETO CHEF JACKET

Features: Bar-tacked on all pressure points • Thermometer sleeve pocket • Crossover neckline • Concealed stainless steel studs • Contrast piping • Classic look • Welted chest pocket • Mandarin wrap collar • French cuffs

Fabrication: 220g 100% Cotton fabric

Branding:

E

BARRON Chef - Tapered Fit									
Sizes	XS	S	M	L	XL	2XL	3XL	4XL	5XL
1/2 Chest (cm)	45	50	55	60	65	70	75	80	85



Thermometer sleeve pocket



Contrast piping



White



BC-ROM - ROMA CHEF JACKET

Features: Available only in long sleeve • Welted chest pocket with contrast piping • Vibrant two-tone jacket design • Crossover neckline • Concealed stainless steel studs • Back mesh panel for added comfort and ventilation • Thermometer sleeve pocket • Contrast shoulder panels • Two-piece sleeves with turn-up cuffs
Fabrication: 225g 65/35 Poly Cotton fabric
Branding:

E

BARRON Chef - Tapered Fit									
Sizes	XS	S	M	L	XL	2XL	3XL	4XL	5XL
1/2 Chest (cm)	45	50	55	60	65	70	75	80	85



Thermometer sleeve pocket



Turned-up cuffs



Grey/Black



Red/Black



White/Black

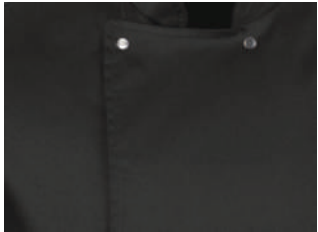


BC-UT - FIGO UTILITY TOP

Features: Available only in short sleeve • Side slits • Double breasted front panel and yoke • Thermometer sleeve pocket • Bar-tacking and single top-stitched armholes and shoulders • A basic that all kitchens need
Fabrication: 190g 80/20 Poly Cotton fabric
Branding:

E

BARRON Chef - Tapered Fit									
Sizes	XS	S	M	L	XL	2XL	3XL	4XL	5XL
1/2 Chest (cm)	45	50	55	60	65	70	75	80	85



Crossover chest design



Thermometer sleeve pocket



Black



White



Navy/White Check



Black/White Check



Black

BC-BAG - CHEF BAGGY PANTS

Features: Bar-tacked pockets for added durability • Comfortable baggy pants • Elasticated waist with draw cord • Ideal for the kitchen
• Two side pockets • One back pocket • Monza side pocket on the thigh

Fabrication: 200g 65/35 Poly Cotton fabric

Branding:

E

Baggy Pants - Regular Fit									
Sizes	XS	S	M	L	XL	2XL	3XL	4XL	5XL
Waist (Inches)	26/28	30/32	34	36/ 38	40/42	44	46/48	50	52/54
1/2 Waist (cm)	66-73	74-81	82-89	90-97	98-105	106-113	114-121	122-129	130-138



Monza thigh pocket

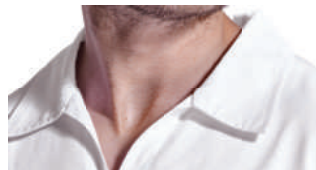
BC-FSJ - BARRON FOOD SAFETY JACKET

Features: Available only in long sleeve • Bar-tacking on all pressure points
 • Food processing jacket • Cut-away neckline • Front yoke • Single top-stitching throughout • ½ Elasticated cuffs • Inner chest pocket with pen slot • Side slits
Fabrication: 225g 65/35 Poly Cotton fabric

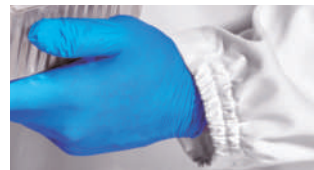
Branding:

E **SP** **HP**

BARRON Chef - Tapered Fit									
Sizes	XS	S	M	L	XL	2XL	3XL	4XL	5XL
½ Chest (cm)	45	50	55	60	65	70	75	80	85



Cut-away neck line



½ Elasticated cuff



White

BC-FSP - BARRON FOOD SAFETY PANTS

Features: Bar-tacking on all pressure points • Elasticated waistband with draw cord for a comfortable fit • Back pocket • Double top-stitched seams for added durability
Fabrication: 225g 65/35 Poly Cotton fabric

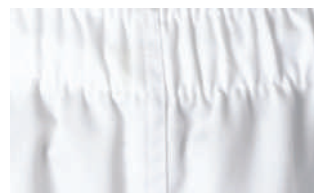
Branding:

E **SP** **HP**

Baggy Pants - Regular Fit									
Sizes	XS	S	M	L	XL	2XL	3XL	4XL	5XL
Waist (Inches)	26/28	30/32	34	36/38	40/42	44	46/48	50	52/54
½ Waist (cm)	66-73	74-81	82-89	90-97	98-105	106-113	114-121	122-129	130-138



White



Elasticated waist



DC - DELI CAP

Features: Knife pleats at front of cap • Peak front with hard fusing
• Elasticated back rim for comfortable fit
Fabrication: 65/35 Poly Cotton Twill
Branding:

HP

NEW



Black



White



BC-M - CHEF MUSHROOM HAT

Features: Adjustable velcro tab
Fabrication: 225g 65/35 Poly Cotton fabric
Branding:

E

SP

HP



Black



White



Back view



Velcro tab



BC-B - CHEF BEANIE

Features: Adjustable velcro tab
Fabrication: 65/35 Poly Cotton fabric
Branding:

E

SP

HP



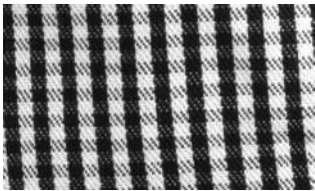
Black



White



Black/White Check



Black/White fabric detail

A-T - TAPERED APRON

Features: Bar-tacked on all pressure points • Easy access angled pocket • Looped towel holder • Front flap • Tapered for a comfortable fit • Ideal for any kitchen

Fabrication: Poly Cotton twill fabric

Branding:

E SP HP

Tapered Apron	
Length (cm)	80



Black



White



BC-S - CHEF SKULL CAP

Features: Twin needle top-stitching • Mesh side panel for cool and comfortable wear

Fabrication: 190g 80/20 Polly Cotton

Branding:

E SP HP



Black



Red/Black



Lime/Black



White



A-BI - BISTRO APRON

Features: Double front pocket with pen slot • One size fits all • Cloth loop • Perfect for restaurants and coffee shops • Multi-function pocket • Lime is a new colour

Fabrication: Poly Cotton Twill

Branding:

E SP HP

Bistro Apron	
Length (cm)	50



Black



Navy



Red



Lime



Grey



White

A-B - BIB APRON

Features: Two side pockets • One size fits all • A hospitality industry fixture • Also great for domestic and promotional use • Two pocket compartments • Lime is a new colour

Fabrication: Poly Cotton Twill

Branding:

E SP HP

Bib Apron	
Length (cm)	78



Black



Navy



Grey



Red



Lime



White





BH0149 - NON WOVEN APRON

Features: One pocket • One size fits all • Adjustable neck ties • Adjustable body ties
 • A hospitality industry fixture • Also great for domestic and promotional use

Fabrication: 80g Non-Woven Polyester fabric

Branding:

E SP

NEW

Non Woven Apron	
Length (cm)	73



Black



Navy



Royal



Red



Yellow



Front pocket detail



BH0148 - NON WOVEN BIB

Features: One size fits all • Adjustable body ties • A hospitality industry fixture
 • Also great for domestic and promotional use

Fabrication: 80g Non-Woven Polyester fabric

Branding:

E SP HP

NEW

Non Woven Bib	
Width & Length (cm)	40 x 60



Black



Navy



Royal



Red



Yellow



Body ties

SF007 - BARRON OCCUPATIONAL SHOE

Features: CE ISO20347: 2011 approved occupational lightweight shoe • Single density PU sole • Water resistant • Anti-static • Anti-slip • Anti-bacterial insole • Oil resistant • Unisex • Perfect for chefs, hospitals and front-line staff • Elasticated side panel • Microfiber upper and higher heel

BARRON Occupational Shoe	
Sizes	2 - 13



Black



Elasticated side panel



Raised front blocks

SHOV-CLOG - BARRON SHOVA CLOG

Features: CE EN 20347: 2012 OB FO SRA CLASS II approved • Made from virgin PVC • Unisex PVC clog best for kitchens, hospitals and gardens • Anti-bacterial inner sock • Slip resistant inner sole • Blood & fat/Oil & acid resistant • 25 Part nitrile content sole • Sole design with extra deep tread lugs to provide excellent grip on all terrain • Wider foot shape for more comfort • The foot shape is compliant within SABS parameters • REACH compliant

NEW

BARRON Shova Clog	
Sizes	4 - 13



White/Grey



Bottom view



DELI-GUM - BARRON SHOVA DELI GUMBOOT

Features: CE EN 20347: 2012 OB FO SRA CLASS II approved • Wider foot shape for more comfort • The foot shape is compliant within SABS parameters • Ankle cups provides more support and eliminates ankle friction • Ankle support reinforces the achilleas tendon area for additional support • Sole design with extra deep tread lugs to provide excellent grip on all terrain • Lower top band for ease while working • Sole foot bed with built-in foot shape • Anti-bacterial inner sock • Made from virgin PVC • Blood & fat/Oil & acid resistant • 25 Part nitrile content sole • REACH compliant

NEW

BARRON Shova Deli Gumboot	
Sizes	4 - 13





LO-MA - MENS MAITRE D' LOUNGE SHIRT

Features: Single top-stitching on arm and shoulder seams • Double button closure on long sleeve cuffs • Yarn-dyed contrast detailing on the button stand, collar and cuffs • Raised collar • Stylish option for hospitality and the office • Back yoke with box pleat

Fabrication: Poly Cotton lightweight fabric

Branding:

E

Mens Lounge Shirt - Regular Fit								
Sizes	S	M	L	XL	2XL	3XL	4XL	5XL
1/2 Chest (cm)	52	57	62	67	72	77	82	87



Black



White



Contrast sleeve tap



Mens roll-up sleeve detail

LL-MA - LADIES MAITRE D' BLOUSE

Features: Single top-stitching on arm and shoulder seams • Double button closure on long sleeve cuffs • Yarn-dyed contrast detailing on the button stand, collar and cuffs • Front, back and bust darts ensure a more flattering fit • Stylish option for hospitality and the office • Can be worn as long or short sleeve

Fabrication: Poly Cotton lightweight fabric

Branding:

E

Ladies Blouse - Regular Fit								
Sizes	S	M	L	XL	2XL	3XL	4XL	5XL
1/2 Chest (cm)	45	49	53	57	61	65	69	73



Black



White



Collar detail



Ladies roll-up sleeve detail



LO-BAR - MENS BARISTA LOUNGE LONG SLEEVE

Features: Top-stitched armholes and shoulder seams • A fashionable addition ideal for hospitality management and waitrons • Mandarin collar • Concealed button stand with the top button visible • Double button cuffs with a button-through gauntlet • Back box pleat for wearer comfort • Curved hem • Only available in long sleeve
Fabrication: Lightweight Poly Cotton shirting fabric

Branding:

E

Mens Lounge Shirt - Tapered Fit								
Sizes	S	M	L	XL	2XL	3XL	4XL	5XL
1/2 Chest (cm)	50	55	60	65	70	75	80	85



Black



White



Red



Concealed button stand

LL-BAR - LADIES BARISTA BLOUSE LONG SLEEVE

Features: Top-stitched armholes and shoulder seams • A fashionable addition ideal for hospitality management and waitrons • Bust, front and back darts for a more fitted and flattering look • Double button cuffs • Curved hem • Only available in long sleeve • Red is a new colour
Fabrication: Lightweight Poly Cotton shirting fabric

Branding:

E

Ladies Blouse - Regular Fit								
Sizes	S	M	L	XL	2XL	3XL	4XL	5XL
1/2 Chest (cm)	45	49	53	57	61	65	69	73



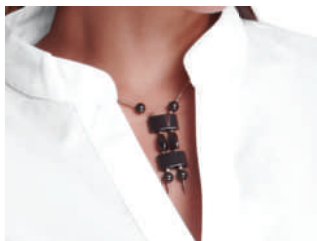
Black



White



Red



Mandarin collar

A man with short dark hair, wearing a blue high-visibility vest with reflective white stripes over a black long-sleeved shirt, is looking down at a clipboard he is holding. He is in a warehouse or industrial setting, with blurred shelves and lights in the background. The vest has a small rectangular label on the left chest.

ON

HIGH-VISIBILITY WORKWEAR

With our High-visibility Workwear, you can Switch your brand **ON** in more ways than one. We have a diverse range of high-visibility golf shirts, jackets and T-shirts to keep you in sight.

WC-HIG - HIGHWAY WAISTCOAT

Features: Lightweight waistcoat with ID pocket • Full zip front • Front and back reflective tape • Royal is a new colour

Fabrication: 120g 100% Polyester fabric

Branding:

E **SP** **HP**

Waistcoat - Regular Fit								
Sizes	S	M	L	XL	2XL	3XL	4XL	5XL
1/2 Chest (cm)	57	59.5	62	64.5	67	70	73	76



ID pocket



Royal



Back view



Red



Safety Orange



Lumo Green



Safety Yellow



Navy



Hot Pink

B-BAS - BASIC SAFETY BIB

Features: Reflective tape • Adjustable straps

Fabrication: 100% Polyester

Branding:

SP HP

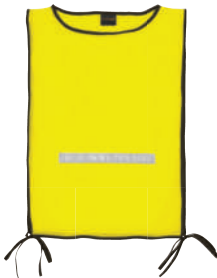
Contractor Mesh Bib	
Size (cm)	40 x 60



Safety Orange



Reflective tape detail



Safety Yellow



Back view



B-MB - MESH BIB

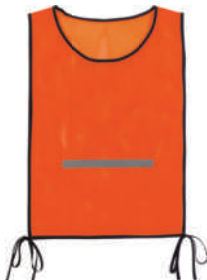
Features: Reflective tape • Adjustable straps

Fabrication: 100% Polyester

Branding:

HP

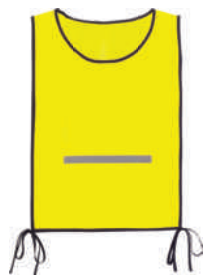
Contractor Mesh Bib	
Size (cm)	40 x 60



Safety Orange



Mesh fabric detail



Safety Yellow



Back view



WC-AIR - AIRFIELD WAISTCOAT

Features: EN ISO 20471 approved • Contrast binding on neckline, armholes and hem • CE approved PVC reflective tape • ID pocket with snap closure on chest

Fabrication: 100% Polyester mesh

Branding:

HP

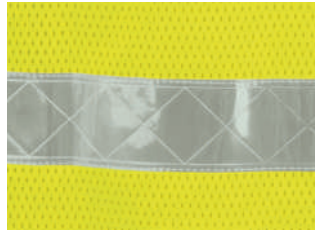
NEW

Airfield Waistcoat

SIZE (CM)	S	M	L	XL	XXL	XXXL	4XL	5XL
1/2 Chest	54	56	58	60	62	64	66	68



ID chest pocket



Reflective tape detail



Safety Yellow



Back view



CON-MESH - CONTRACT MESH BIB

Features: Reflective tape • ISO 20471:2013 approved

Fabrication: 100% Polyester

Branding:

HP

Contractor Mesh Bib	
Size (cm)	35 x 53



Safety Orange



Safety Yellow



Mesh fabric detail



Back view



CON-SOLID - CONTRACT SOLID BIB

Features: Reflective tape • ISO 20471:2013 approved

Fabrication: 120g Polyester

Branding:

SP

HP

Contractor Mesh Bib	
Size (cm)	35 x 53



Safety Orange



Safety Yellow



Reflective tape detail



Back view



CON-WPVC - CONTRACT PVC WAISTCOAT

Features: Contrast binding on neckline, armholes and hem • PVC Reflective tape

• ID Pocket • Snap closure on chest

Fabrication: 100% Polyester

Branding:

SP HP

Waistcoat - Budget Sizing								
Sizes	S	M	L	XL	2XL	3XL	4XL	5XL
½ Chest (cm)	54	56	58	60	62	64	66	68



ID chest pocket



Wrap around reflective tape



Safety Yellow



Back view



CON-WAIST - CONTRACT WAISTCOAT

Features: High-visibility waistcoat • Reflective tape • ID pocket • Full zip front • Tonal self-fabric binding • ISO 20471:2013 approved

Fabrication: 120g 100% Polyester

Branding:

SP HP

Waistcoat - Budget Sizing								
Sizes	S	M	L	XL	2XL	3XL	4XL	5XL
½ Chest (cm)	54	56	58	60	62	64	66	68



Safety Orange



ID chest pocket



Safety Yellow



Back view





HI-SUR - SURGE GOLFER

Features: Dynamic golfer perfect for the workwear industry • High-visibility body
• Reflective chevron and reflective print next to the panels • Knitted rib collar
• Grown on placket • Set sleeves

Fabrication: 170g 100% Polyester with moisture management

Branding:

E **SP** **HP**

Mens Golfer - Regular Fit								
Sizes	S	M	L	XL	2XL	3XL	4XL	5XL
½ Chest (cm)	53	56.5	60	63.5	67	70.5	74	77.5



Reflective chevron



Knitted rib collar



Safety Orange/Navy



Safety Yellow/Navy

HI-RAI - RAID GOLFER

Features : Twin needle cover seam hem • Printed reflective detail on sleeves
 • Knitted rib collar • Grown on placket • Shoulder panel with reflective piping
 • Two-tone body with reflective tape on the front and back

Fabrication: 170g 100% Polyester with moisture management

Branding:

E **SP** **HP**

Mens Golfer - Regular Fit								
Sizes	S	M	L	XL	2XL	3XL	4XL	5XL
½ Chest (cm)	53	56.5	60	63.5	67	70.5	74	77.5



Safety Orange/Navy



Safety Yellow/Navy



Reflective print on sleeve



Chest pocket

HI-CON - CONCORD LONG SLEEVE GOLF SHIRT

Features : Reflective print on sleeve and side panels • Long sleeve safety golfer
 • Contrast sleeve and side panels • Side slits • Knitted collar • Three button placket
 • Chest pocket with button and pen slot • Self-fabric neck tape

Fabrication: 180g 60/40 Cotton rich bonded fabric

Branding:

E **SP** **HP**

Mens Golfer - Easy Fit								
Sizes	S	M	L	XL	2XL	3XL	4XL	5XL
½ Chest (cm)	53	56.5	60	63.5	67	70.5	74	77.5



Safety Orange/Navy



Safety Yellow/Navy



Reflective print on sleeve



Knitted collar





HI-BRI - BRIDGEPORT GOLFER

Features: Reflective print on sleeve and side panels • Safety golfer • Contrast sleeves • Side panels • Side slits • Knitted collar • Three button placket • Chest pocket with button and pen slot and self-fabric neck tape

Fabrication: 180g 60/40 Cotton rich bonded fabric

Branding:

E

SP

HP

Mens Golfer - Easy Fit

Sizes	S	M	L	XL	2XL	3XL	4XL	5XL
1/2 Chest (cm)	53	56.5	60	63.5	67	70.5	74	77.5



Safety Orange/Navy



Safety Yellow/Navy



Button on pocket



Reflective print on sleeve

HI-NAV - NAVIGATOR GOLF SHIRT

Features: Contrast piping detail • Easy care garment • Raglan styling • Coordinated knitted collar • White marble three button reinforced placket • Striking option for safety wear • Will complement any promotional range

Fabrication: 170g 100% Polyester fabric

Branding:

E

SP

HP

Mens Golfer - Regular Fit

Sizes	S	M	L	XL	2XL	3XL	4XL	5XL
1/2 Chest (cm)	55	58	60.5	63	65.5	68	71.5	74.5



Safety Orange/Navy



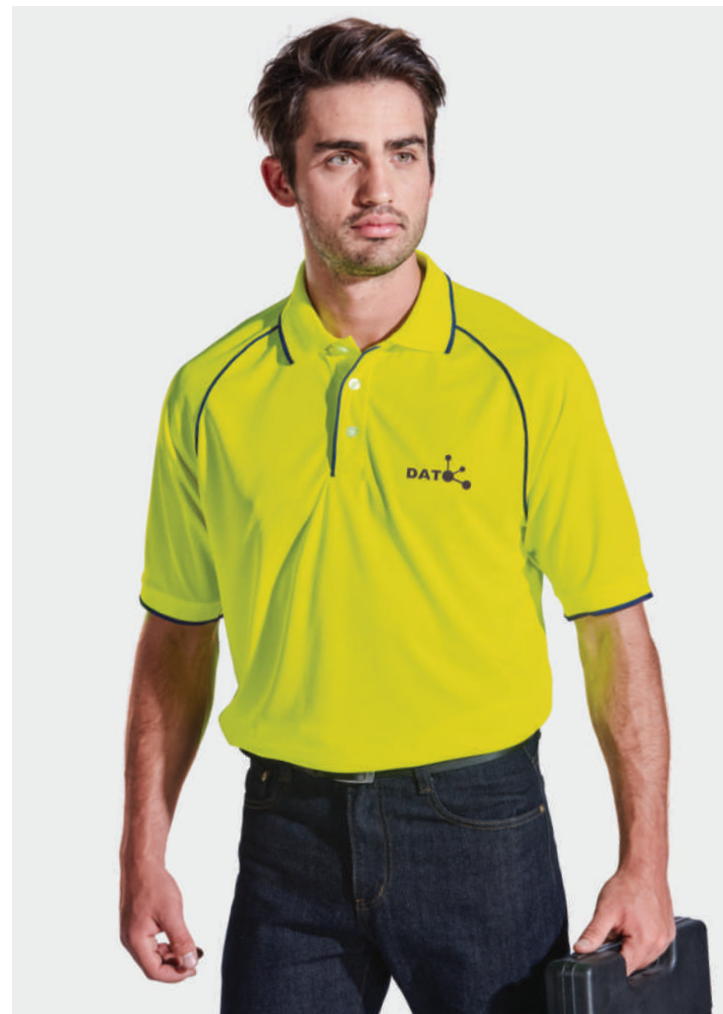
Safety Yellow/Navy



Contrast piping detail



Button Detail





HI-PAT - PATROL GOLFER

Features: Reflective tape across chest and shoulders • Day and night application
 • Two-tone styling with great versatility • Three button placket
 • Striped knitted collar • Top-stitched finish for durability
 • Ideal for construction workers, safety patrol or security

Fabrication: 180g 60/40 Bonded fabric with Polyester outer and Cotton rich inner

Branding:

E SP HP

Mens Golfer - Regular Fit								
Sizes	S	M	L	XL	2XL	3XL	4XL	5XL
1/2 Chest (cm)	55	58	60.5	63	65.5	68	71.5	74.5



Safety Orange/Navy



Safety Yellow/Navy



Striped knitted collar



Reflective tape detail

HI-TRA - TRANSIT LONG SLEEVE GOLFER

Features: Reflective tape across chest, shoulders and elbows • Day and night application
 • Long sleeve high-visibility golfer with reflective tape • Three button placket
 • Double striped knitted collar • Chest pocket • Rib-cuff • Ideal for construction workers, safety patrols or security

Fabrication: 180g 60/40 Bonded fabric with Polyester outer and Cotton rich inner

Branding:

E SP HP

Mens Golfer - Regular Fit								
Size	S	M	L	XL	2XL	3XL	4XL	5XL
1/2 Chest (cm)	53	56.5	60	63.5	67	70.5	74	77.5



Safety Orange/Navy



Safety Yellow/Navy



Chest pocket



Reflective tape detail





TAC-LS - TACTICAL GOLFER LONG SLEEVE

Features: Anti-bacterial finish • Soil-resistant finish • Robust golfer • Long lasting work wear garment • Knitted collar and cuff • Side slits • Double top-stitching throughout • Loose pocket provided

Fabrication: 210g Double knit Polyester fabric: e-Dri. Moisture management fabric

Branding:

E SP HP

Mens Golfer - Regular Fit								
Sizes	S	M	L	XL	2XL	3XL	4XL	5XL
1/2 Chest (cm)	53	56.5	60	63.5	67	70.5	74	77.5



Safety Orange



Safety Yellow



Black



Navy



TAC - TACTICAL GOLFER SHORT SLEEVE

Features: Anti-bacterial finish • Soil-resistant finish • Robust golfer • Long lasting work wear garment • Knitted collar and cuff • Side slits • Double top-stitching throughout • Loose pocket provided

Fabrication: 210g Double knit Polyester fabric: e-Dri. Moisture management fabric

Branding:

E SP HP

Mens Golfer - Regular Fit								
Sizes	S	M	L	XL	2XL	3XL	4XL	5XL
1/2 Chest (cm)	53	56.5	60	63.5	67	70.5	74	77.5



Safety Orange



Safety Yellow



Black



Navy

TAL - TAILGATE GOLFER

Features : Striking raglan design • Reflective piping on sleeves and side panels for high-visibility • Double-stitched hem • Three button placket • Side slits • Knitted collar and cuffs • Contrast double stripes • Bonded fabric with Polyester outer and Cotton inner

Fabrication: 180g 60/40 Cotton rich fabric

Branding:

E

SP

HP

Mens Golfer - Regular Fit

Sizes	S	M	L	XL	2XL	3XL	4XL	5XL
½ Chest (cm)	53	56.5	60	63.5	67	70.5	74	77.5



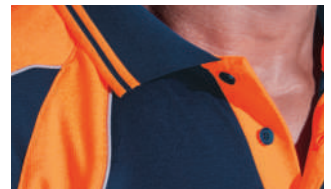
Navy/Safety Orange



Navy/Safety Yellow



Contrast double stripes



Knitted collar detail

TSS150BT - 150G POLY SAFETY T-SHIRT WITH TAPE

Features : Double-needle finish for durability • Reflective tape on both front and back of sleeves and chest to provide maximum visibility • High-visibility tape

Fabrication: 150g 65/35 Poly Cotton single jersey fabric

Branding:

E

SP

HP

T-Shirt - Comfort Fit

Sizes	S	M	L	XL	2XL	3XL	4XL	5XL
½ Chest (cm)	51	54	57	60	63	66	69	72



Safety Orange



Safety Yellow



Navy



Reflective tape detail



CON-SVEST - CONTRACT SLEEVELESS REFLECTIVE VEST

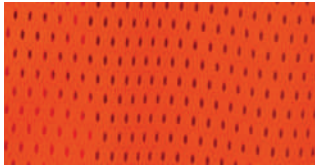
Features: Reflective tape • Full zip front • Two-tone colourway • ID Chest pocket
• ISO 20471:2013 approved

Fabrication: 100g Polyester mesh fabric

Branding:

E **HP**

Jacket - Budget Sizing									
Sizes	S	M	L	XL	2XL	3XL	4XL	5XL	
1/2 Chest (cm)	54	56	58	60	62	64	66	68	



Mesh fabric detail



ID chest pocket



Safety Yellow/Orange



Back view

**CON-LVEST - CONTRACT LONG SLEEVE REFLECTIVE VEST**

Features: Reflective tape • Full zip front • Two-tone colourway • ID Chest pocket
• ISO 20471:2013 approved

Fabrication: 100g Polyester mesh fabric

Branding:

E

Jacket - Budget Sizing									
Sizes	S	M	L	XL	2XL	3XL	4XL	5XL	
1/2 Chest (cm)	54	56	58	60	62	64	66	68	



Mesh fabric detail



ID Chest pocket



Safety Yellow/Orange



Back view





FOR-JAC - FORCE JACKET

Features : Epaulettes • Removable sleeves which makes it a versatile work wear garment • Full frontal zip • Solid chest and back panel for branding • 2 Side pockets • Elasticated cuffs and waistband • Reflective tape • High-visibility mesh jacket

Fabrication: 100% Polyester

Branding:

E **SP** **HP**

BARRON Jacket - Easy Fit								
Sizes	S	M	L	XL	2XL	3XL	4XL	5XL
1/2 Chest (cm)	57	60	63	66	69	72	75	78



Safety Yellow/Orange



Removable sleeves



Zip detail



Back view



LO-SHA - SHAFT SAFETY SHIRT LONG SLEEVE

Features: Contrast two piece collar • Long sleeve high-visibility shirt with reflective tape • Constructed placket • Chest pocket with flap • Velcro closure and extended back hem • Triple-stitching • Available in long sleeve only

Fabrication: 100% Lightweight Cotton twill fabric with a UV finish

Branding:

E SP HP

Mens Lounge Shirt - Regular Fit								
Sizes	S	M	L	XL	2XL	3XL	4XL	5XL
Collar	38	40	42	44	46	48	50	52
1/2 Chest (cm)	52	57	62	67	72	77	82	87



Navy/Safety Orange



Navy/Safety Yellow



Navy



Pocket detail

MI-QUA - QUARRY FLEECE

Features: Double top-stitched hem • Easy care garment • Anti-pill finish • Safety fleece with reflective tape across the chest and sleeves • Contrast collar • Chunky front zip • Side pockets • Rib-cuffs

Fabrication: 240g 100% Polyester micro fleece

Branding:

E

Mens Fleece - Comfort Fit									
Sizes	XS	S	M	L	XL	2XL	3XL	4XL	5XL
1/2 Chest (cm)	54	57	60	63	66	69	72	75	78



Navy/Safety Orange



Navy/Safety Yellow



Reflective tape detail



Zip detail





HAW-JAC - HAWK JACKET

Features: Fold away hood with velcro detail • Contrast fleece collar detail
 • Inner quilted and padded lining • Waterproof bunny jacket • Elasticated sleeve cuffs and hem band • Reflective tape for high visibility • Slanted welt pockets
Fabrication: 100% Polyester, 300D Oxford

Branding:

SP HP

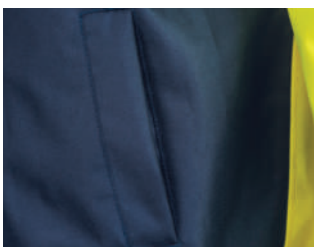
NEW

BARRON Jacket - Regular Fit

Sizes	S	M	L	XL	XXL	XXXL	4XL	5XL
1/2 Chest (cm)	58	62	66	70	74	78	82	86



Elasticated sleeve cuff



Pocket detail



Back view



Safety Yellow/Navy



Safety Orange/Navy



BAR-JAC - BARRICADE JACKET

Features: Removable sleeves • Inner zip for embroidery access • ID Pocket • Removable sleeves • Welt side pocket • Chest pockets • Sleeve pocket • Ribbed hem and cuffs • Reinforced seams • Bar tacking finish on all pressure points for a high quality work wear garment • Water resistant coating • Contrast 220g micro fleece lining

Fabrication: 100% Coated oxford Polyester

Branding:

E HP

BARRON Jacket - Regular Fit								
Sizes	S	M	L	XL	2XL	3XL	4XL	5XL
1/2 Chest (cm)	58	62	66	70	74	78	82	86



Safety Orange



Safety Yellow



Black



Navy



Zip-off sleeves



Arm pocket detail



ID pocket detail

COM-JAC - COMMUTER JACKET

Features: Reflective tape for high-visibility • Storm flap with Nylon zip and snaps
 • Wind resistant • Contrast inner fleece lining • Hood with tonal draw cord and toggles
 • Elasticated cuffs • Concealed zip pockets with fabric zip puller
 • Inner self-fabric welt

Fabrication: 100% Polyester water resistant fabric

Branding:

E SP

BARRON Jacket - Regular Fit								
Sizes	S	M	L	XL	2XL	3XL	4XL	5XL
1/2 Chest (cm)	56	60	64	68	72	76	80	84



Safety Orange/Reflect



Elastic cuff detail



Safety Yellow/Reflect



Back view

VEN-JAC - VENTURE PADDED JACKET

Features: High-visibility reflective tape • Padded and fully lined • Two-tone medium weight jacket • Adjustable cuffs • Storm flap • Concealed hood • Two front pockets with a flap • Reinforced seams • Bar-tacked finish on all pressure points
 • High quality work wear garment • Water and wind resistant

Fabrication: Water and wind resistant Polyester fabric

Branding:

E SP

BARRON Jacket - Regular Fit								
Sizes	S	M	L	XL	2XL	3XL	4XL	5XL
1/2 Chest (cm)	58	62	66	70	74	78	82	86



Safety Orange/Navy



Reflective tape detail



Safety Yellow/Navy



Back view



FLE-JAC - FLEET JACKET

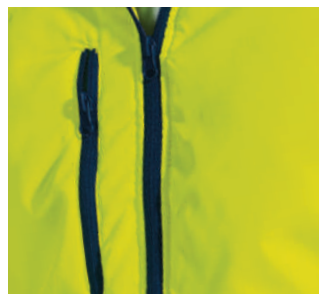
Features: Front horizontal inseam pockets • Fully padded • Fully lined • Two-tone jacket • Perfect for working in winter • Reflective tape on shoulders, sleeves and body • Velcro tab on sleeve hem • Front chest pocket with zip closure • Concealed hood with cord and toggles • Front yoke has been angled for ample branding space • Water and wind resistant coating

Fabrication: 100% Coated oxford Polyester

Branding:

E

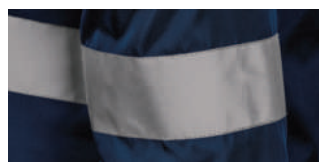
BARRON Jacket - Regular Fit								
Sizes	S	M	L	XL	2XL	3XL	4XL	5XL
1/2 Chest (cm)	58	62	66	70	74	78	82	86



Zip-up chest pocket



Back reflective tape



Reflective tape detail



Velcro tab on sleeve hem



Safety Yellow/Navy



Safety Orange/Navy



JUN-JAC - JUNCTION JACKET

Features: High-visibility reflective tape • Single top-stitching throughout
 • Two-tone soft-shell jacket • Zippered side pockets • Chest pocket
 • Storm flap • ½ Elasticated cuffs • Contrast back yoke
 • Contrast bonded fleece lining

Fabrication: 310g 4-Way stretch bonded Polyester fabric

Branding:

E **SP** **HP**

BARRON Jacket - Regular Fit

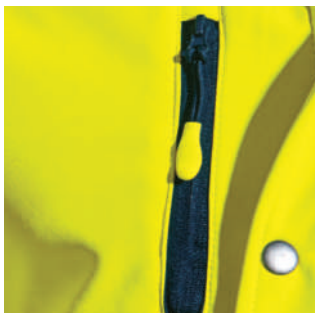
Sizes	XS	S	M	L	XL	2XL	3XL	4XL	5XL
1/2 Chest (cm)	50	54	58	62	66	70	74	78	82



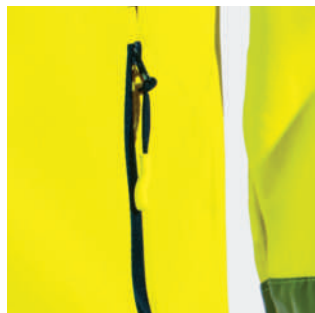
Reflective tape detail



Press stud detail



Zip puller detail



Zippered side pockets



Safety Yellow



Safety Orange



CON3-JAC - CONTRACTOR 3-IN-1 JACKET

Features: Reflective tape for high-visibility • Wind resistant • Versatile workwear jacket • Lightweight outer jacket • Removable zip-off mesh vest with safety tape • Combined high-visibility jacket • Front storm flap • Adjustable sleeve tabs • Concealed roll-up hood • Inner pocket • Reinforced seams • Bar-tacked finish on all pressure points for toughness • Water-resistant coating

Fabrication: 100% Coated oxford Polyester

Branding:

E SP

BARRON Jacket - Regular Fit								
Sizes	S	M	L	XL	2XL	3XL	4XL	5XL
½ Chest (cm)	56	60	64	68	72	76	80	84



Safety Orange/Navy



Safety Yellow/Navy



Orange inner mesh



Yellow inner mesh



Inner Mesh



Reflective tape detail



Inner mesh fabric detail



BLA4-JAC - BLAZE 4-IN-1 JACKET

Features: Lightweight padding with removable inner • Wind resistant • Ingenious work wear jacket • Lightweight outer jacket • Polar fleece body warmer • Zip-off water-resistant high-visibility body warmer • Combined Hi-Vis jacket • Front storm flap • Adjustable cuffs • Concealed hood • Two front pockets with flaps • Reinforced seams • Bar-tacked finish on all pressure points for durability • Water-resistant finish • Removable inner has a high-visibility reflective tape and fleece lining

Fabrication: 100% Coated oxford Polyester

Branding:

E

BARRON Jacket - Regular Fit

Sizes	S	M	L	XL	2XL	3XL	4XL	5XL
1/2 Chest (cm)	56	60	64	68	72	76	80	84



Safety Orange/Navy



Safety Yellow/Navy



Orange reversible inner



Yellow reversible inner



Water resistant body warmer



Polar fleece body warmer



Reflective tape detail



Polar fleece zip detail



BEA-JAC - BEACON JACKET

Features: Zip-off padded hood • Wind resistant • Robust jacket with quilted padding • Storm flap • Front chest pockets with studs • Two front pockets with double entry • Adjustable velcro tabs on the cuffs • Reflective tape for high-visibility • Designed to allow for easy embroidery access

Fabrication: 100% Polyester outer with water-resistant finish

Branding:

E

BARRON Jacket - Regular Fit								
Sizes	S	M	L	XL	2XL	3XL	4XL	5XL
½ Chest (cm)	56	60	64	68	72	76	80	84



Black



Navy



Back view

CON-JAC - CONVOY JACKET

Features: Concealed hood • Reflective tape for high-visibility • Wind resistant • Versatile jacket • Elasticated cuffs • Full zip front • Towelling • Draw cord and toggles in the hood and waist

Fabrication: 100% Polyester water-resistant outer fabric

Branding:

SP

BARRON Jacket - Econo Fit								
Sizes	S	M	L	XL	2XL	3XL	4XL	5XL
½ Chest (cm)	57.5	60	62.5	65	67.5	70	72.5	75



Safety Orange



Safety Yellow



Navy



Reflective detail





R-SUI - RAIN SUIT

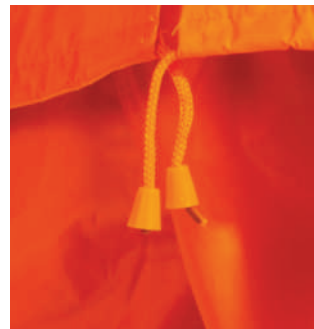
Features: Jacket with concealed hood • Adjustable studs on cuffs • Two front pockets • Reflective tape on arms, legs, across torso and a cross at the back • Reflective tape only on safety orange and safety yellow • Trousers with adjustable studs on hem and two side pockets • Jacket with full zip and storm flap • Trousers with fully elasticated waist • Welded seams for permanent water resistance

Fabrication: Polyester PVC coated fabric

Branding:

SP

Rain Suit - Regular Fit								
Sizes	S	M	L	XL	2XL	3XL	4XL	5XL
Jacket Sizes	36	38	40/42	46/48	46/48	50	52/54	56/58
½ Chest (cm)	57	61	65	69	73	77	81	85
Waist (cm)	76-91	81-96	85-101	91-106	96-111	101-116	106-121	111-128



Drawcord with toggles



Reflective tape detail



Safety Orange



Safety Yellow



Navy



Hood detail



CS-PJ - PREMIER CONTI JACKET WITH REFLECTIVE TAPE

Features: High-visibility reflective tape • Reinforced bar-tacking on all pressure points
• Two front pockets • One chest pocket with flap and pen slot • Side slits
• Front yoke • For added durability triple-stitching has been added to the armholes, under-sleeve and shoulder seams

Fabrication: 210g Polyester blend fabric

Branding:



Safety Yellow/Navvy



Back view



Pocket detail

CS-PT - PREMIER CONTI TROUSER WITH REFLECTIVE TAPE

Features: High-visibility reflective tape • Bar-tacking for added durability
• ½ Elasticated waist • Two side pockets and one back pocket
• Triple-stitched inner leg, back and front rise

Fabrication: 210g Polyester blend fabric

Branding:



Navy



Back view

BARRON Conti Suit - Supreme Fit														
Sizes	XS	S	S	M	M	L	L	XL	2XL	3XL	3XL	4XL	4XL	5XL
Jacket Sizes	32	34	36	38	40	42	44	46	48	50	52	54	56	58
½ Chest (cm)	49.8	52.2	54.6	57	59.4	61.8	64.2	66.6	69	71.4	73.8	77.2	79.6	82
Waist (cm)	70-82	75-87	80-92	85-97	90-102	95-107	100-112	105-117	110-122	115-127	120-132	125-137	130-142	135-147

CON-SSUN - CONTRACT SAFETY SUN HAT

Features: Reflective binding on edge • Inner sweatband • Cord and stopper • Available in 2 Hi-Visibility colours

Fabrication: 100% Hi-Vis Polyester fabric

Branding:

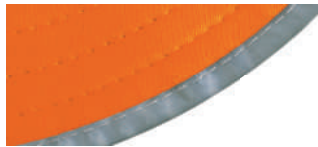
E SP HP



Safety Orange



Safety Yellow



Reflective binding



Cord stopper detail



HW045 - 7 PANEL HAZARD CAP

Features: Unstructured 7 panel cap • Contrast mesh inserts • Pre-curved peak with reflective tape binding • Safety application • Velcro closure

Fabrication: 100% Hi-Vis Polyester fabric

Branding:

E SP HP



Safety Orange/Navy



Safety Yellow/Navy



Mesh



Reflective binding



HW039 - HI-VIS FLOPPY HAT

Features: 6 Rows of stitching on brim with reflective tape piping • Reflective tape around crown • Eyelets for ventilation • Bucket hat design • Safety application

Fabrication: 100% Hi-Vis Polyester fabric

Branding:

E SP HP



Safety Orange/Reflective



Safety Yellow/Reflective



Reflective detail





ON PROTECTIVE OUTERWEAR

Put safety first, second and third with these acid-resistant, flame-retardant, dust-proof products designed to protect your greatest assets, your people.

CS-HI - HI-VIS CONSTRUCTION CONTI SUIT

Features: Reflective tape on hem and sleeve edge • Chest pockets with reflective tape and mesh detail • Pants have ½ elasticated waistband • Front slanted pockets • Reflective tape on knees • Bartacks on stress points • Triple needle stitching to reinforce seams

Fabrication: 210g 80/20 Poly Cotton Twill

Branding:

E SP HP

NEW



Royal



Back view



Pocket detail

HI-Vis Construction Conti Suit - Supreme Fit														
Sizes	XS	S	S	M	M	L	L	XL	2XL	3XL	3XL	4XL	4XL	5XL
Jacket Sizes	32	34	36	38	40	42	44	46	48	50	52	54	56	58
½ Chest (cm)	49,8	52,2	54,6	57	59,4	61,8	64,2	66,6	69	71,4	73,8	77,2	79,6	82
Waist (cm)	70-82	75-87	80-92	85-97	90-102	95-107	100-112	105-117	110-122	115-127	120-132	125-137	130-142	135-147



CT-CON - CONTRACT POLY COTTON CONTI SUIT

Features: Two side pockets • Monza chest pocket with single top-stitching • Pants have ½ elasticated waistband • Two side entry pockets • One back patch pocket • Triple needle stitching on inner leg, front and back rise

Fabrication: 200g 90/10 Poly Cotton Twill Fabric

Branding:

E SP HP

NEW



Royal



Back view

CT-CONR - CONTRACT POLY COTTON CONTI SUIT WITH REFLECTIVE TAPE

Features: Two side pockets • Monza chest pocket with single top-stitching • Pants have ½ elasticated waistband • Two side entry pockets • One back patch pocket • Triple needle stitching on inner leg, front and back rise

Fabrication: 200g 90/10 Poly Cotton Twill Fabric

Branding:

E SP HP

NEW



Royal



Back view

BARRON Conti Suit - Budget Fit

Sizes	XS	S	S	M	M	L	L	XL	2XL	3XL	3XL	4XL	4XL	5XL
Jacket Sizes	32	34	36	38	40	42	44	46	48	50	52	54	56	58
½ Chest (cm)	48.5	51	53.5	56	58.5	61	63.5	66	68.5	71	73.5	76	78.5	81
Waist (cm)	62-72	67-77	72-82	77-87	82-92	87-97	92-102	97-107	102-112	107-117	112-122	117-127	122-132	127-137

CS-BPC - BARRON BUDGET POLY COTTON CONTI SUIT

Features: Sold according to jacket sizes • Concealed metallic zips
• Jacket has two side pockets, Monza chest pocket with single top-stitching throughout • Pants have ½ elasticated waistband, two side pockets, one back pocket • Triple-stitched inner leg, back and front rise
Fabrication: 210g Poly Cotton twill fabric

Branding:

E SP HP



BARRON Conti Suit - Budget Fit														
Sizes	XS	S	S	M	M	L	L	XL	2XL	3XL	3XL	4XL	4XL	5XL
Jacket Sizes	32	34	36	38	40	42	44	46	48	50	52	54	56	58
½ Chest (cm)	48.5	51	53.5	56	58.5	61	63.5	66	68.5	71	73.5	76	78.5	81
Waist (cm)	62-72	67-77	72-82	77-87	82-92	87-97	92-102	97-107	102-112	107-117	112-122	117-127	122-132	127-137



CS-BR - BARRON BUDGET POLY COTTON CONTI WITH REFLECTIVE TAPE

Features: Reflective tape on elbows and knees • Concealed metallic zips • Two side pockets • Monza chest pocket • Single top-stitching throughout • Pants have ½ elasticated waistband, two side pockets, one back pocket • Triple-stitched inner leg, back and front rise • Sold according to jacket sizes

Fabrication: 210g Poly Cotton twill fabric

Branding:

E **SP** **HP**



Pocket detail



Reflective detail



Royal



Navy



Black



Grey



Orange



Red



Emerald



Khaki

BARRON Conti Suit - Budget Fit														
Sizes	XS	S	S	M	M	L	L	XL	2XL	3XL	3XL	4XL	4XL	5XL
Jacket Sizes	32	34	36	38	40	42	44	46	48	50	52	54	56	58
1/2 Chest (cm)	48.5	51	53.5	56	58.5	61	63.5	66	68.5	71	73.5	76	78.5	81
Waist (cm)	62-72	67-77	72-82	77-87	82-92	87-97	92-102	97-107	102-112	107-117	112-122	117-127	122-132	127-137



Grey/Black



Navy/Red



Royal/Navy



Olive/Navy



Back view

CT-TT - BARRON BUDGET TWO-TONE CONTI JACKET

Features: Front patch pockets • Contrast front and back yoke • Monza pocket • Concealed CF zip • Olive/Khaki is the new colour
Fabrication: 210g 80/20 Poly Cotton
Branding:

E SP HP

BARRON Conti Suit - Budget Fit														
Sizes	XS	S	S	M	M	L	L	XL	2XL	3XL	3XL	4XL	4XL	5XL
Jacket Sizes	32	34	36	38	40	42	44	46	48	50	52	54	56	58
½ Chest (cm)	48.5	51	53.5	56	58.5	61	63.5	66	68.5	71	73.5	76	78.5	81



CT-BPC / CT-BC - BARRON BUDGET POLY COTTON/ COTTON CONTI TROUSER

Features: Sold according to waist sizes • Concealed metallic zip • Bar-tacking on all pressure point • Trousers have ½ elasticated waistband, two side pockets and one back pocket • Triple-stitching on the inner leg, back and front rise • Red, Grey, Olive is the new colours

Fabrication: 210g Poly Cotton twill fabric / 100% Cotton denim fabric

Branding:

E



Royal



Navy



Denim



Orange



Red



Emerald



Olive



Grey



Black

BARRON Conti Pants - Budget Fit													
Sizes	S	S	M	M	L	L	XL	2XL	3XL	3XL	4XL	4XL	5XL
Waist (cm)	30	32	34	36	38	40	42	44	46	48	50	52	54
½ Waist (cm)	67 - 77	72 - 82	77 - 87	82 - 92	87 - 97	92 - 102	97 - 107	102 - 117	107 - 117	112 - 122	117 - 127	122 - 132	127 - 137

CS-BC - BARRON BUDGET 100% COTTON CONTI SUIT

Features: Concealed YKK metallic zips • Sold according to jacket sizes • Jacket features include two side pockets and a Monza chest pocket with single top-stitching throughout • The pants have ½ elasticated waistband, triple-stitched inner leg, back and front rise, two side pockets and one back pocket

Fabrication: 220g 100% Cotton twill fabric, 10 Oz Denim fabric

Branding:

E SP HP



Denim



Navy



Royal



BARRON Conti Suit - Budget Fit														
Sizes	XS	S	S	M	M	L	L	XL	2XL	3XL	3XL	4XL	4XL	5XL
Jacket Sizes	32	34	36	38	40	42	44	46	48	50	52	54	56	58
1/2 Chest (cm)	48.5	51	53.5	56	58.5	61	63.5	66	68.5	71	73.5	76	78.5	81
Waist (cm)	62-72	67-77	72-82	77-87	82-92	87-97	92-102	97-107	102-112	107-117	112-122	117-127	122-132	127-137



CS-BCR - BARRON BUDGET 100% COTTON CONTI SUIT WITH REFLECTIVE

Features: Reflective tape on elbows and knees • Concealed metallic zips • Two side pockets • Monza chest pocket • Single top-stitching throughout • Pants have ½ elasticated waistband, two side pockets, one back pocket • Triple-stitched inner leg, back and front rise • Sold according to jacket sizes

Fabrication: 100% Cotton

Branding:

E SP HP



Denim



Back view

BARRON Conti Suit - Budget Fit

Sizes	XS	S	S	M	M	L	L	XL	2XL	3XL	3XL	4XL	4XL	5XL
Jacket Sizes	32	34	36	38	40	42	44	46	48	50	52	54	56	58
½ Chest (cm)	48.5	51	53.5	56	58.5	61	63.5	66	68.5	71	73.5	76	78.5	81
Waist (cm)	62-72	67-77	72-82	77-87	82-92	87-97	92-102	97-107	102-112	107-117	112-122	117-127	122-132	127-137

BS-BC - BUDGET BOILER SUIT

Features: Front patch pocket at chest • Triple needle stitching to reinforce seams • Bartacks on stress points • Concealed front with shank opening
Fabrication: 210g 80/20 Poly Cotton Twill

Branding:

E

SP

HP

NEW



Royal



White



Back view

Budget Boiler Suit - Budget Fit													
Sizes	S	S	M	M	L	L	XL	2XL	3XL	3XL	4XL	4XL	5XL
SIZES CM	32	34	36	38	40	42	44	46	48	50	52	54	56
1/2 CHEST	49,5	52	54,5	57	59,5	62	64,5	67	69,5	72	74,5	77	79,5



CS-SPC - BARRON SUPREME POLY COTTON CONTI SUIT

Features: Jacket with concealed YKK zip • Twin-needle top-stitched mitred chest pocket with V- flap and pen division • Triple-stitching has been added to the armholes and underarm • Pants have ½ elasticated waistband • Triple top-stitched front, back rise and inner and outer leg • Pants with double top-stitched side pockets and one back pocket • Reinforced bar-tacking on seams and all pressure points

Fabrication: 210g Poly Cotton

Branding:

E **SP** **HP**



Royal



Navy



Triple-stitched inner and outer leg



Pen division pocket

BARRON Conti Suit - Supreme Fit														
Sizes	XS	S	S	M	M	L	L	XL	2XL	3XL	3XL	4XL	4XL	5XL
Jacket Sizes	32	34	36	38	40	42	44	46	48	50	52	54	56	58
½ Chest (cm)	49.8	52.2	54.6	57	59.4	61.8	64.2	66.6	69	71.4	73.8	77.2	79.6	82
Waist (cm)	70-82	75-87	80-92	85-97	90-102	95-107	100-112	105-117	110-122	115-127	120-132	125-137	130-142	135-147

CS-SC - BARRON SUPREME 100% COTTON CONTI SUIT

Features: Jacket with concealed YKK zip • Twin-needle top-stitched mitred chest pocket with V- flap and pen division • Triple-stitching has been added to the armholes and underarm • Pants have ½ elasticated waistband • Triple top-stitched front, back rise and inner and outer leg • Pants with double top-stitched side pockets and one back pocket • Reinforced bar-tacking on seams and all pressure points

Fabrication: 220g 100% Cotton

Branding:

E SP HP



Navy



Royal



Triple-stitched inner and outer leg



Pen division pocket

BARRON Conti Suit - Supreme Fit														
Sizes	XS	S	S	M	M	L	L	XL	2XL	3XL	3XL	4XL	4XL	5XL
Jacket Sizes	32	34	36	38	40	42	44	46	48	50	52	54	56	58
½ Chest (cm)	49.8	52.2	54.6	57	59.4	61.8	64.2	66.6	69	71.4	73.8	77.2	79.6	82
Waist (cm)	70-82	75-87	80-92	85-97	90-102	95-107	100-112	105-117	110-122	115-127	120-132	125-137	130-142	135-147



CJ-D59 - BARRON D59 (SABS) FLAME AND ACID RETARDANT CONTI JACKET

Features: Reinforced bar-tacked seams and pressure points • Reflective tape on elbows
• SABS approved • Concealed YKK front zip opening • Chest pocket with V-flap and press stud, hangerloop, side slits and elasticated cuffs

Fabrication: 300g 100% Cotton with acid and flame retardant finish

Branding:



Navy



Embroidered badge



Pocket detail

CT-D59 - BARRON D59 (SABS) FLAME AND ACID RETARDANT CONTI TROUSER

Features: Reinforced bar-tacked seams and pressure points • Reflective tape on knees
• SABS approved • ½ Elasticated waistband • Triple needle top-stitching on front and back rise and also on the inner and outer leg • Two swing pockets, money pocket, side tool pocket and one back patch pocket

Fabrication: 300g 100% Cotton with acid and flame retardant finish

Branding:



Navy



Back view

BARRON Conti Suit - SABS Fit

Sizes	XS	S	S	M	M	L	L	XL	2XL	3XL	3XL	4XL	4XL	5XL
Jacket Sizes	32	34	36	38	40	42	44	46	48	50	52	54	56	58
½ Chest (cm)	49.5	52	54.5	57	59.5	62	64.5	67	69.5	72	74.5	77	79.5	82
Waist (cm)	70-80	75-85	80-90	85-90	90-100	95-105	100-110	105-115	110-120	115-125	120-130	125-135	130-140	135-145

CS-APC - BARRON ACID RESISTANT POLY COTTON CONTI SUIT

Features: Concealed YKK metallic zips • Bar-tacking on pressure points • Jacket features include two side pockets • Monza chest pocket with double top-stitching • The pants have ½ elasticated waistband with triple-stitching on the inner and outer leg as well as the back and front rise • Pants feature two side pockets and one back pocket

Fabrication: 80/20 Poly Cotton with acid resistant finish

Branding:

E



Pocket detail



Collar detail



Olive

BARRON Conti Suit - Budget Fit														
Sizes	XS	S	S	M	M	L	L	XL	2XL	3XL	3XL	4XL	4XL	5XL
Jacket Sizes	32	34	36	38	40	42	44	46	48	50	52	54	56	58
½ Chest (cm)	48.5	51	53.5	56	58.5	61	63.5	66	68.5	71	73.5	76	78.5	81
Waist (cm)	62-72	67-77	72-82	77-87	82-92	87-97	92-102	97-107	102-112	107-117	112-122	117-127	122-132	127-137

ON

HOW TO CHOOSE YOUR CONTI SUIT

POLY COTTON BUDGET CONTI SUITS (CS-BPC)

- Strong durable fabric
- Standard cut
- Hold its shape well
- Does not wear well in heated areas
- Has good colour fastness qualities

SUPREME POLY COTTON (CS-SPC)

- Strong durable fabric
- Generous cut
- Holds its shape well
- Does not wear well in heated areas
- Has good colour fastness qualities

BUDGET 100% COTTON (CS-BC)

- Standard cut
- Good cooling properties
- Allow for 5% shrinkage
- Fading may occur
- Environmentally friendly fabric
- Breathable fabric
- Wears well in heated areas
- Non static fabric

SUPREME 100% COTTON (CS-SC)

- Generous cut
- Good cooling properties
- Allow for 5% shrinkage

- Fading may occur
- Environmentally friendly fabric
- Breathable fabric
- Wears well in heated areas
- Non static fabric

ACID RESISTANT POLY COTTON (CS-APC)

- Resistant to certain acids and alkalis
- Not resistant to battery acid, sulphuric acid, hydrofluoric acid and certain other acids
- Strong durable fabric
- Standard cut
- Hold its shape well
- Does not wear well in heated areas
- Has good colour fastness qualities

D59 FLAME AND ACID RETARDANT (CS-D59)

- SABS approved
- Heavy duty cotton fabric
- Acid retardant
- Resistant to certain acids and alkalis
- Not resistant to battery acid, sulphuric acid, hydrofluoric acid and certain other acids
- Flame retardant
- Generous cut
- Allow for 5% shrinkage
- Fading may occur
- Additional protection to be worn when welding i.e.: chrome leather apron, gloves and spats



ON

SEWING ON REFLECTIVE TAPE

WE CAN ADD REFLECTIVE TAPE OR AN ID POCKET TO ANY GARMENT IN OUR IN-HOUSE SEWING FACILITY.

POSITIONS:



SEW ON POSITIONS:



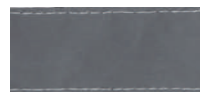
Safety Yellow/Reflective



Safety Orange/Reflective
(Available on request)



Silver Tape - 2 cm
(Available on request)



Silver Tape - 2.5 cm
(Available on request)



Silver Tape - 5 cm
(Available on request)



ID Pocket



BC-FSJ - BARRON FOOD SAFETY JACKET

Features: Available only in long sleeve • Bar-tacking on all pressure points • Food processing jacket • Cut-away neckline • Front yoke • Single top-stitching throughout • ½ Elasticated cuffs • Inner chest pocket with pen slot • Side slits
Fabrication: 225g 65/35 Poly Cotton fabric

Branding:

E **SP** **HP**

BARRON Chef - Tapered Fit									
Sizes	XS	S	M	L	XL	2XL	3XL	4XL	5XL
½ Chest (cm)	45	50	55	60	65	70	75	80	85



White

BC-FSP - BARRON FOOD SAFETY PANTS

Features: Bar-tacking on all pressure points • Elasticated waistband and draw cord for a comfortable fit • Back pocket • Double top-stitched seams for added durability
Fabrication: 225g 65/35 Poly Cotton fabric

Branding:

E **SP** **HP**

Baggy Pants - Regular Fit									
Waist (Inches)	26/28	30/32	34	36/38	40/42	44	46/48	50	52/54
½ Waist (cm)	66-73	74-81	82-89	90-97	98-105	106-113	114-121	122-129	130-138



White



CS-DISP - CONTRACT DISPOSABLE COVERALL

Features: Elasticated cuffs, ankles, back waist and hood

• CF zip opening

Fabrication: 35 GSM non woven material

NEW

BARRON Coverall - Budget Fit					
Sizes (cm)	M	L	XL	XXL	XXXL
Across Chest (Full)	140	150	160	166	186



White

LAB-MUL - MULTIFUNCTIONAL LAB COAT

Features: Front pockets on hem • Unisex coat • Perfect for any profession

• Grown on button stand • One piece collar • Patch pocket on chest

• Two back pleats • Laid on waist tab • Single layer back yoke

• Available in long and short sleeves

Fabrication: 210g Poly Cotton

Branding:

E **SP** **HP**

Multifunctional Lab Coat - Tapered Fit									
Sizes	XS	S	M	L	XL	2XL	3XL	4XL	5XL
1/2 Chest (cm)	45	50	55	60	65	70	75	80	85



Long sleeve



Short sleeve

CS-DUST - BARRON POLY COTTON DUST COAT

Features: Subtle BARRON pocket sidewinder branding • Button-through front
• Thigh length • An industry standard for lab, warehouse, workshop and general maintenance application • Single chest and two front pockets
• Durable self-colour plastic buttons for non-scratch wear

Fabrication: 210g Poly Cotton twill fabric

Branding:

E SP HP



White



Red



Royal



Navy



BARRON Dust Coat - Regular Fit														
Sizes	XS	S	S	M	M	L	L	XL	2XL	3XL	3XL	4XL	4XL	5XL
Jacket Sizes	32	34	36	38	40	42	44	46	48	50	52	54	56	58
½ Chest (cm)	52	54	57	59	62	64	67	69	72	74	77	79	81	83

CS-HOU - LADIES POLY COTTON HOUSE COAT

Features: Bust darts • Perfect outerwear to protect ladies' clothes while cleaning or cooking • Grown on button stand with buttons • Two front patch pockets
• Short sleeves with a cuff

Fabrication: 210g 80/20 Poly Cotton

Branding:

E SP HP

Ladies Poly Cotton House Coat - Regular Fit									
Sizes	XS	S	M	L	XL	2XL	3XL	4XL	5XL
1/2 Chest (cm)	43	47	51	55	59	63	67	71	75



Button detail



Pocket detail



Navy



Royal



Red



Back view



CS-SET - LADIES POLY COTTON 3 PIECE SET

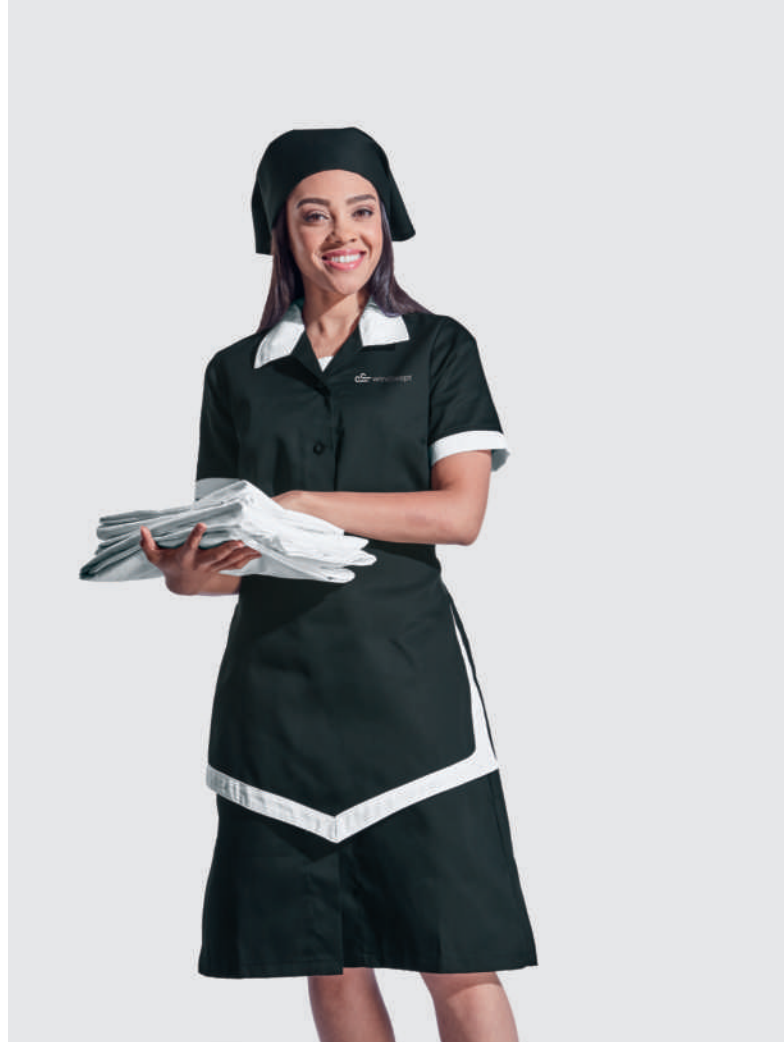
Features: Bust darts • Three piece house coat set • Set includes a dress, apron and head scarf
 • The dress is adapted from our new Ladies Poly Cotton House Coat
 • Contrast reverse collar • Grown on button stand • Two front patch pockets
 • Two-tone apron and head scarf

Fabrication: 210g 80/20 Poly cotton

Branding:

E SP HP

Ladies Poly Cotton 3 Piece Set - Regular Fit									
Sizes	XS	S	M	L	XL	2XL	3XL	4XL	5XL
1/2 Chest (cm)	43	47	51	55	59	63	67	71	75



PIN-IR - IRIS PINAFORE

Features: Perfect pinafore for a variety of industries • Adjustable waist tabs
 • Self-fabric binding on the edges • Kangaroo pocket divided into multiple compartments

Fabrication: 210g 80/20 Poly Cotton

Branding:

E SP HP

Iris Pinafore - Regular Fit				
Sizes	S/M	L/XL	2XL/3XL	4XL/5XL
1/2 Chest (cm)	38	48	58	68





DS-DAI - DAISY DRESS

Features: Notches on neckline • Grown on button stand • Princess panels • Slanted pockets • Comfortable for any work • Button on the shoulders for detachable epaulettes • Epaulettes not supplied • Contrast piping on the neck, sleeves and pockets

Fabrication: 175g 100% Polyester

Branding:

E SP HP

Daisy Dress - Regular Fit									
Sizes	XS	S	M	L	XL	2XL	3XL	4XL	5XL
1/2 Chest (cm)	41	45	49	53	57	61	65	69	73



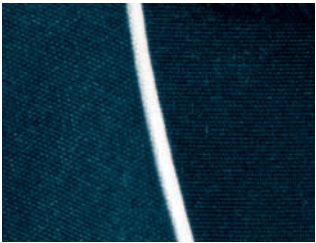
Pocket trim



Self fabric loop



Button on shoulders



Contrast piping detail



Black/White



Navy/White



Khaki/Black



White/Navy



GZ-JAC - GROUND ZERO JACKET

Features: Bar-tacking on all pressure point • Insulated padded jacket with elasticated cuff • Freezer Jacket, ideal for those very cold working conditions • Two front pockets, one chest pocket • Hood with draw cord • Invisible zip for embroidery access • Water resistance outer

Fabrication: Oxford Polyester outer, 140g Heavy weight padding and lining

Branding:

E

BARRON Ground Zero Jacket - Regular Fit								
Sizes	S	M	L	XL	2XL	3XL	4XL	5XL
1/2 Chest (cm)	58	62	66	70	74	78	82	86



Navy

GZ-PAN - GROUND ZERO PANTS

Features: Insulated padded freezer pants • Elasticated waist with draw cord can easily be adjusted for a comfortable fit • Double top-stitched front and back rise for a durable finish • Water resistance outer

Fabrication: Oxford Polyester outer, 140g Heavy weight padding and lining

Branding:

E



Navy

BARRON Ground Zero Pants- Regular Fit									
Sizes	XS	S	M	L	XL	2XL	3XL	4XL	5XL
Waist (cm)	26/28	30/32	34	36/ 38	40/42	44	46/48	50	52/54
1/2 Waist (cm)	66-73	74-81	82-89	90-97	98-105	106-113	114-121	122-129	130-138



R-SUI - RAIN SUIT

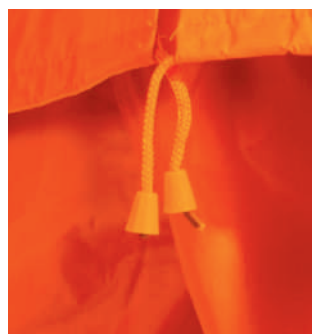
Features: Jacket with concealed hood • Adjustable studs on cuffs • Two front pockets • Reflective tape on arms, legs, across torso and a cross at the back • Reflective tape only on safety orange and safety yellow • Trousers with adjustable studs on hem and two side pockets • Jacket with full zip and storm flap • Trousers with fully elasticated waist • Welded seams for permanent water resistance

Fabrication: Polyester PVC coated fabric

Branding:

SP

Rain Suit - Regular Fit								
Sizes	S	M	L	XL	2XL	3XL	4XL	5XL
Jacket Sizes	36	38	40/42	46/48	46/48	50	52/54	56/58
½ Chest (cm)	57	61	65	69	73	77	81	85
Waist (cm)	76-91	81-96	85-101	91-106	96-111	101-116	106-121	111-128



Drawcord with toggles



Reflective tape detail



Safety Orange



Safety Yellow



Navy



Hood detail

CON-R - CONTRACT RAIN SUIT

Features: Rain jacket with two front patch pockets • Elasticated cuffs and storm flap
• Trousers have an elasticated waist and double top-stitching throughout
• Heat sealed seams

Fabrication: 100% Waterproof Polyester PVC coated fabric

Branding:

SP

Rain Suit - Regular Fit								
Sizes	S	M	L	XL	2XL	3XL	4XL	5XL
Jacket Sizes	36	38	40/42	46/48	46/48	50	52/54	56/58
½ Chest (cm)	64.5	66	67.5	69	70.5	72	73.5	75
Waist (cm)	68-81	72-85	76-89	80-93	84-97	88-101	92-105	96-109



Yellow



Navy



CON-RC - CONTRACT RAIN COAT

Features: Raglan sleeve styling • Open sleeve • Press stud front • Double top-stitching throughout • Hood with adjustable draw cord • Heat sealed seams

Fabrication: 100% Waterproof Polyester PVC coated fabric

Branding:

SP

Rain Coat - Regular Fit								
Sizes	S	M	L	XL	2XL	3XL	4XL	5XL
Jacket Sizes	36	38	40/42	46/48	46/48	50	52/54	56/58
½ Chest (cm)	64.5	66	67.5	69	70.5	72	73.5	75



Yellow



Navy



CON-RR - CONTRACT REFLECTIVE RAIN SUIT

Features: Rain jacket with two front patch pockets • Elasticated cuffs and storm flap
• Reflective tape across torso, back and knees • Trousers have an elasticated waist and double top-stitching throughout • Heat sealed seams

Fabrication: 100% Waterproof Polyester PVC coated fabric

Branding:

SP

Rain Suit - Regular Fit								
Sizes	S	M	L	XL	2XL	3XL	4XL	5XL
Jacket Sizes	36	38	40/42	46/48	46/48	50	52/54	56/58
½ Chest (cm)	64.5	66	67.5	69	70.5	72	73.5	75
Waist (cm)	68-81	72-85	76-89	80-93	82-97	88-101	92-105	96-109



Back view



Yellow/ Reflect

Safety Orange/Reflect

Navy/Reflect





ON

SECURITY

A security officer needs to be easily identifiable, that's why security has all the staples that let people know your team is **ON** the scene and **ON** the lookout.



SEC-LS- SECURITY JERSEY

Features: 10 Gauge Needle Knit • Woven elbow patches and epaulettes • Available only in long sleeves

Fabrication: 100% Acrylic

Branding:

E

NEW

Adults								
Sizes	S	M	L	XL	XXL	XXXL	4XL	5XL
1/2 Chest (cm)	48	51	54	57	60	63	66	69



Navy



Black



Epaulette detail

LO-CON - CONTRACT COMBAT SHIRT

Features: Two front chest pockets with box pleats and flap with button • Shoulder epaulettes with buttons • Revere collar and front pintucks • Bartacked at stress points for added durability • Available in short sleeves

Fabrication: 210g 80/20 Poly Cotton Twill

Branding:

E SP HP

NEW

Adults								
Sizes	S	M	L	XL	2XL	3XL	4XL	5XL
1/2 Chest (cm)	51	56	61	66	71	76	81	86



Olive



Black



Navy



Box pleats and flap with button

PA-CON - CONTRACT COMBAT TROUSER

Features: Pintucks down front of legs • Half elasticated waistband • Triple needle stitching on inner legs for added durability • Functional side leg pocket with flap and button

Fabrication: 210g 80/20 Poly Cotton Twill

Branding:

E

NEW



Olive



Navy



Black



Contract Combat Trousers - Regular Fit									
SIZES (CM)	XS	S	M	L	XL	2XL	3XL	4XL	5XL
WAIST EXTENDED	82	92	102	112	122	132	142	152	162

LO-FID - FIDELITY COMBAT SHIRT

Features: Back neck yoke • Button down epaulettes • Short sleeve combat shirt • Two front pockets with button closure as well as epaulettes • Notched neck collar • Single top-stitched shoulder seam for added strength • Bar-tacked pressure points

Fabrication: 200g 80/20 Poly Cotton fabric

Branding:

E

Mens Lounge Shirt - Regular Fit								
Sizes	S	M	L	XL	2XL	3XL	4XL	5XL
1/2 Chest (cm)	52	57	62	67	72	77	82	87



Black



Navy



Button down epaulettes



Back view

LO-FID - FIDELITY COMBAT TROUSER

Features: Bar-tacks on all stress points • Top-stitched back and front rise • Flat front security trouser • Pin tuck detail • Double top-stitched inner leg for added durability • Two side pockets • Wide belt loops • One back pocket with Velcro closure • Elasticated hem and mock cargo pockets

Fabrication: 200g 80/20 Poly Cotton fabric

Branding:

E



Black



Navy

BARRON Pants - Regular Fit												
Sizes	2XS	XS	S	M	L	XL	2XL	3XL	4XL	5XL	6XL	7XL
Waist (Inches)	28	30	32	34	36	38	40	42	44	46	48	50
1/2 Waist (cm)	36	38.5	41	43.5	46	48.5	51	53.5	56	58.5	61	63.5



LO-PIL - PILOT SHIRT

Features: Single top-stitched armholes and shoulder seams • Epaulettes • Two chest pockets with a flaps • Pen slot in the left pocket • Double back yoke with box pleat • Constructed button stand • Curved hemline • Long and short sleeve options
Fabrication: Easy care Poly Cotton fabric

Branding:

E SP HP

Mens Lounge Shirt - Regular Fit								
Sizes	S	M	L	XL	2XL	3XL	4XL	5XL
Collar	38	40	42	44	46	48	50	52
1/2 Chest (cm)	52	57	62	67	72	77	82	87



Sky



White

PA-CLA - MENS STATEMENT CLASSIC PANTS

Features: Durable fabric • Front pleated styling • Easy care garment • Classic trousers ideal for uniform and everyday use • Two front and back pockets • Constructed waistband • Turn-ups
Fabrication: 100% Polyester

Branding:

E

BARRON Pants - Regular Fit										
Sizes	2XS	XS	S	M	L	XL	2XL	3XL	4XL	5XL
Waist (Inches)	28	30	32	34	36	38	40	42	44	46
1/2 Waist (cm)	37	39.5	42	44.5	47	49.5	52	54.5	57	59.5



Navy



Black

HW012 - CASTRO CAP

Features: Metallic eyelets • Buckle and tuck-in turn closure
Fabrication: Cotton twill fabric

Branding:

E SP HP



Navy



Black



Military Green



Camouflage



Khaki



Back view



LL-PLA - LADIES BASIC POLY COTTON BLOUSE

Features: Dropped shoulder • Front and back waist darts • Side slits
• Constructed button stand • Button-through gauntlet • Shaped hem
• Feminine fit • Available in long and short sleeves

Fabrication: 65/35 Poly Cotton fabric

Branding:

E

Ladies Blouse - Regular Fit								
Sizes	S	M	L	XL	2XL	3XL	4XL	5XL
1/2 Chest (cm)	45	49	53	57	61	65	69	73



Sky/Blue



Red



Black



White

LBK-CAR - LADIES BASIC CARDIGAN

Features: Classic styling • Button-up cardigan • Ribbed neckline • Shaped side seams
• Five tonal buttons • Ideal office wear

Fabrication: 100% Acrylic, 10 Gauge needle knit

Branding:

E

BARRON Cardigan - Regular Fit								
Sizes	S	M	L	XL	2XL	3XL	4XL	5XL
1/2 Chest (cm)	44	47	50	53	56	59	62	65



Navy



Black

L-SS - LADIES STATEMENT SKIRT

Features: Classic pencil styling • Easy care garment • Chic back slit • Fashionable corporate look • Ideal uniform element to go with many top options in the BARRON range • Constructed waistband with elasticated inserts in larger sizes

Fabrication: 100% Polyester

Branding:

E

BARRON Skirt - Regular Fit										
Sizes	2XS	XS	S	M	L	XL	2XL	3XL	4XL	5XL
Waist (Inches)	28	30	32	34	36	38	40	42	44	46
1/2 Waist (cm)	32.5	35	37.5	40	42.5	45	47.5	50	52.5	55



Navy



Black





BAR-JAC - BARRICADE JACKET

Features: Removable sleeves • Inner zip for embroidery access • ID Pocket
 • Welt side pocket • Chest pockets • Sleeve pocket • Ribbed hem and cuffs
 • Reinforced seams • Bar tacking finish on all pressure points for a high quality work wear garment • Water resistant coating • Contrast 220g micro fleece lining

Fabrication: 100% Coated oxford Polyester

Branding:

E **HP**

BARRON Jacket - Regular Fit								
Sizes	S	M	L	XL	2XL	3XL	4XL	5XL
1/2 Chest (cm)	58	62	66	70	74	78	82	86



Safety Orange



Safety Yellow



Black



Navy



Zip-off sleeves



Arm pocket detail



ID Pocket



BEA-JAC - BEACON JACKET

Features: Zip-off padded hood • Wind resistant • Robust jacket with quilted padding • Storm flap • Front chest pockets with studs • Two front pockets with double entry • Adjustable velcro tabs on the cuffs • Reflective tape for high-visibility • Designed to allow for easy embroidery access

Fabrication: 100% Polyester outer with water-resistant finish

Branding:

E

BARRON Jacket - Regular Fit								
Sizes	S	M	L	XL	2XL	3XL	4XL	5XL
1/2 Chest (cm)	56	60	64	68	72	76	80	84



Black



Navy



Back view

SF004 - BARRON PROTECTOR BOOT

Features: Anti-static removable inner sole • Oil resistant • Slip resistant • Shock resistant • Durable shoe • Anti-static and oil resistant finish • Dual density PU sole

BARRON Protector Boot	
Sizes	3 - 13



Black



Durable metallic eyelets





ON

FOOTWEAR

Our Footwear offers tough, protective and rugged shoes and boots for every environment, so that dropping something on your foot isn't the end of the world.

SHOSH-GUM - BARRON SHOSHLOZA MINING GUMBOOT

Features: CE EN 20345: 2011 SB SRA CLASS II approved • Made from PVC • Wider foot shape for more comfort • The foot shape is compliant within SABS parameters • Ankle cups provides more support and eliminates ankle friction • The ankle pad helps to stabilize, protect and support this area of the foot • Sole design with extra deep tread lugs to provide excellent grip on all terrain • Moulded wide fit metal toe cap, fully compliant with all international standards • Impact protection of 200 Joules and complies to EN12568 • Lower top band for ease while working • Sole foot bed with built-in foot shape • REACH compliant

NEW

BARRON Shoshloza Mining Boot	
Sizes	3 - 14



Black/Black



Bottom view



SHOV-GUM - BARRON SHOVA GENERAL PURPOSE GUMBOOT

Features: CE EN 20347: 2012 OB SRA CLASS II approved • Made from semi-recycled PVC • Wider foot shape for more comfort • The foot shape is compliant within SABS parameters • Ankle cups provides more support and eliminates ankle friction • Ankle support reinforces the achilles tendon area for additional support • Sole design with extra deep tread lugs to provide excellent grip on all terrain • Lower top band for ease while working • Sole foot bed with built-in foot shape • REACH compliant

NEW

BARRON Shova General Purpose Gumboot	
Sizes	4 - 13



Side view



Bottom view



Black/Black



XP-GUM - BARRON STIMELA XP GUMBOOT

Features: CE EN ISO 20345: 2011 SB + M • Upper made from Virgin PVC with 10% Nitrile • The sole is made from 25% Nitrile • The sole is acid and oil resistant • PVC upper designed for comfort behind the knee • Extra ankle support and protection • Slip resistant sole • Extra shin protection • Fully integrated metatarsal protection • It absorbs energy and disperses the energy over the sides of the boot • Impact protection of 100 Joules and complies to EN 20345 • Moulded wide fit metal toe cap, fully compliant with all international standards • Impact protection of 200 Joules and complies to EN12568 • Wider foot shape for more comfort • The foot shape is compliant within SABS parameters • Energy absorption insole • REACH compliant

NEW

BARRON XP Stimela Gumboot

Sizes	4 - 13
-------	--------



Side view



Bottom view



Black/Grey



SHOV-CLOG - BARRON SHOVA CLOG

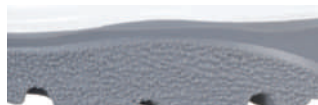
Features: CE EN 20347: 2012 OB FO SRA CLASS II approved • Made from virgin PVC • Unisex PVC clog best for kitchens, hospitals and gardens • Anti-bacterial inner sock • Slip resistant inner sole • Blood & fat/Oil & acid resistant • 25 Part nitrile content sole • Sole design with extra deep tread lugs to provide excellent grip on all terrain • Wider foot shape for more comfort • The foot shape is compliant within SABS parameters • REACH compliant

NEW

BARRON Shova Clog	
Sizes	4 - 13



Tread detail



Deep thread detail



White/Grey



Bottom view

DELI-GUM - BARRON SHOVA DELI GUMBOOT

Features: CE EN 20347: 2012 OB FO SRA CLASS II approved • Wider foot shape for more comfort • The foot shape is compliant within SABS parameters • Ankle cups provides more support and eliminates ankle friction • Ankle support reinforces the achilles tendon area for additional support • Sole design with extra deep tread lugs to provide excellent grip on all terrain • Lower top band for ease while working • Sole foot bed with built-in foot shape • Anti-bacterial inner sock • Blood & fat/Oil & acid resistant • 25 Part nitrile content sole • Made from virgin PVC • REACH compliant

NEW

BARRON Shova Deli Gumboot	
Sizes	4 - 13



Tread detail



Detail



White/Grey





SF007 - BARRON OCCUPATIONAL SHOE

Features: CE ISO20347: 2011 approved occupational lightweight shoe • Single density PU sole • Water resistant • Anti-static • Anti-slip • Anti-bacterial insole • Oil resistant • Unisex • Perfect for chefs, hospitals and front-line staff • Adjustable elasticated side panel • Microfiber upper and higher heel

BARRON Occupational Shoe	
Sizes	2 - 13



Black



Front view



Elasticated side panel

Front blocks raised to improve adhesion

Anti-static, oil resistant

BARRON rubberised logo

Size indicator

Shock absorption and stress release airbag cells

Multi level stabilising channels to improve water fluent channel



Bottom view

SF006 - BARRON CANVAS LACE UP SHOE

Features: Slip resistant • Rubberised toecap • Rubberised sole • Twin-needle stitching • Metallic eyelets • Padded inner sole • Ideal for a working environment that doesn't require a steel toecap • Casual enough to be used as a promo shoe • 100% Cotton canvas fabric

BARRON Canvas Lace Up Shoe	
Sizes	2 - 13



Black/White



Navy/White



White/White

SF005 - BARRON CRUSADER SAFETY SHOE

Features: CE EN ISO20345: 2011 approved safety shoe • Anti-static inner sole • Oil resistant • Slip resistant • Shock resistant • Reflective piping • Bullnose front • Double top-stitching • Suede backing at the inner heel • Steel toecap with impact protection of 200 Joules • Heat resistant up to 90°C • Genuine upper leather, microfiber and PU/PU sole

BARRON Crusader Safety Shoe	
Sizes	2 - 13



Bottom view



Microfiber



Lace bracket



Side view

SF001 - BARRON DEFENDER SAFETY BOOT

Features: SABS SANS 20345 approved safety boot • Anti-static easily removable inner sole • Oil resistant • Slip resistant • Shock resistant • This robust boot also has a steel toecap with impact protection of 200 Joules • Heat resistant up to 90°C • Genuine leather upper and dual density PU sole

BARRON Defender Safety Boot	
Sizes	3 - 13



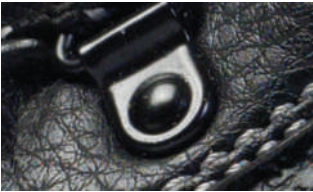
Black



SF002 - BARRON ARMOUR SAFETY SHOE

Features: SABS SANS 20345 approved safety shoe • Anti-static easily removable inner sole • Oil resistant • Slip resistant • Shock resistant • This durable shoe also has a steel toecap with impact protection of 200 Joules • Heat resistant up to 90°C • Genuine leather upper and dual density PU sole

BARRON Armour Safety Shoe	
Sizes	2 - 13



Metallic eyelets



Robust shoe laces



Black





SF004 - BARRON PROTECTOR BOOT

Features: Anti-static removable inner sole • Oil resistant • Slip resistant
 • Shock resistant • Durable shoe • Anti-static and oil resistant finish
 • Shock resistant and dual density PU sole

BARRON Protector Boot	
Sizes	3 - 13

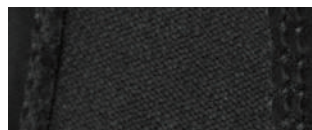


Black

SF003 - BARRON CHELSEA SAFETY BOOT

Features: CE EN ISO20345: 2011 approved safety boot • Anti-static removable inner sole • Oil resistant • Slip resistant • Shock resistant • Steel toecap with impact protection of 200 Joules • Heat resistant up to 90°C • Genuine leather upper and dual density PU sole

BARRON Chelsea Safety Boot	
Sizes	5 - 13



Elasticated detail



Slip resistant



Black



Brown



ON ACCESSORIES

Switch your brand **ON** by adding an extra bit of branding with accessories to match your Workwear and make you look every bit the professional.

WA0001 - HARD HATS

Features: SABS approved • Adjustable ratchet headband • Foam cushion front sweatband for added comfort • Chin strap anchor • 6 point inner • Pink, grey and sky available on request (minimum of 100 units)

Branding:

PP



Back view



Royal



Orange



Yellow



Skyl



Grey



White



Green



Red



Pink

WA0002 - CHIN STRAPS

Features: 2 Point webbing • Adjustable strap • Sold in packs of 10

NEW



Adjustable strap



Black

WA20 - DUST MASKS - SABS APPROVED - FFP2 WITH VALVE

Features: FFP2 Dust Mask with valve • NRCS approved • 20 per box

NEW



White

WA008/WA009 - DUST MASKS - SABS APPROVED

Features: SABS approved • WA008-FFP1 • WA009-FFP2 • 20 per box



White



20 per box



LB-WW - WORK WEAR BELT

Features: Genuine veg leather • Adjustable rivet for sizing adjustments • Tonal top stitching • Metal buckle • Available sizes: Small - Xlarge

NEW



Black



BK4861 - METAL POCKET TORCH WITH LED LIGHTS

Features: Small metal pocket torch • 3 LED lights • Metal trigger clip
• Batteries included • Size: 1.7 x 5.3cm

Branding: (A): 15 x 10mm

PP YAG



Cobalt



Pale Green



Silver



Black



Red

BH5091 - HARD HAT SHAPED STRESS BALL

Features: PU foam • Hard hat shape • Size: 8.4 x 7.2 x 4.7cm

Branding: (A): 10 x 25mm • B: 95 x 30mm

PP



Yellow

BH8958 - DESK TRASH BIN

Features: Plastic desk pencil/waste basket • Size: 7.8 x 9.5 x 14.2cm

Branding: (A): 40 x 60mm

PP



Green



Front view

IND104 - TOURISTA BACKPACK

Features: Extra strength 1680D Nylon • Carry handle • Zippered front pockets • Main zippered compartment • Padded adjustable shoulder straps • Mesh side pockets • Elasticated cord pullers • Grey is a new colour way • Size: 38 x 47 x 18cm

Branding: (A) 90 x 120mm

SP E HP

INDESTRUCTIBLE



Black



Grey



Navy

BB0150 - HIGH VIS BACKPACK

Features: 600D X 300D Polyester and 600D Ripstop • Large zippered main compartment • Middle zippered compartment • Mesh side pockets • Padded carry handle • Padded adjustable shoulder straps • High visibility accents • Front zippered compartment • Size: 46.5 x 35 x 26.5cm

Branding: (A) 40 x 80mm

SP



Grey

BB0054 - NEON SAFETY BACKPACK

Features: Material: 600D Polyester • Large zippered main compartment • Padded adjustable shoulder straps with D-rings • Large front zippered pocket with organiser • Padded bottom with 4 plastic feet • Reflective safety strips on both sides and front • Mesh side pocket • Padded media pocket and mesh pocket inside main compartment • Media hole • Side zippered pocket with mesh • Carry handle • Padded back • Size: 28 x 41 x 17.8cm

Branding: (A) 50 x 50mm

SP E



Back view



Yellow



BH0028 - MULTI FUNCTIONAL FIRST AID KIT

Features: Zippered case • Belt strap • Pre-printed first aid kit logo • First Aid kit: Scissors, 5 adhesive bandages, gauze roll, gloves, tape roll, 5 safety pins, flex adhesive bandage, 3 alcohol pads, triangular arm sling, wound pad • Size: 13.5 x 5 x 7cm

Branding: (A): 60 x 40mm

SP



Black

BH6543 - 16 PIECE FIRST AID KIT IN EVA CASE

Features: Supplied in a EVA foam case • First aid kit: 1 sterile non-woven pad, 1 roll bandage, 1 triangle bandage, 2 safety pins, a pair of scissors, 4 alcohol pads, 5 adhesive sterile plasters, 1 small roll of tape • Size: 16.5 x 12.6 x 5.8cm

Branding: (A): 25 x 60mm

SP



BH1374 - WATERPROOF FIRST AID KIT IN PLASTIC CASE

Features: Waterproof first aid kit: 2 Film dressing, 5 plasters, 4 alcohol prep-pads, 2 wet wipes, 1 antiseptic wipe • Plastic case with carry cord • Pre-printed first aid kit logo • Size: 9.6 x 12.3 x 3.7cm

Branding: (A): 40 x 40mm

SP



BH6544 - AUTO EMERGENCY FIRST AID KIT

Features: Material: EVA • 40 Piece car emergency first aid kit: 15 Plasters, 8 alcohol prep-pads, 2 safety pins, a pair of scissors, 2 PBT bandages, 1 triangle bandage, 1 non-woven tape, 2 pads, 2 cleansing wipes, 2 antiseptic wipes, 1 safety vest, 1 safety blanket, 1 emergency dynamo torch • Packaged in an EVA Pouch • Size: 33 x 14.4 x 8.1cm

Branding: (A): Varies

DOME



Red



BT7495 - RETRACTABLE CAMPING LAMP WITH 6 LED LIGHTS

Features: Retractable camping lamp • 6 LED Lights • Batteries included • Carry handles • ABS Construction
• Size: 12.3 x 8.5cm

Branding: (A): 40 x 25mm

PP



Silver



Retractable camping lamp



BT7159 - 21 PIECE TOOL SET IN PLASTIC CASE

Features: 21 Piece tool set • 4 Sockets • Adapter and adapter attachment • Pliers • Hammer • 1m Tape measure • 10 Screwdriver bits in holder
• Packaged in a plastic case • Size: 9.3 x 17 x 4cm

Branding: (A): SP: 70 x 25mm, Dome: 70 x 40mm

SP

DOME



Light Grey



Open view

BT0017 - EMERGENCY AUTO TOOL KIT

Features: LED Torch • 10 Gauge, 200 amp battery jumper cables • 6 Piece socket set • Driver handle • Aluminium tyre guage • 3 Flathead and 3 Philips screwdriver bits
• Durable 600D carry case with buckle closures • Red contrast stitching
• Size: 29 x 14.5 x 7.4cm

Branding: (A): 42 x 72mm

DOME



Durable 600D carry case



Open view

BT2151 - SECURITY TORCH

Features: Torch in the shape of a baseball bat • Aluminium construction
• Rubber on/off button • Alkaline batteries included • Size: 4 x 36cm

Branding: (A): 10 x 40mm

YAG



Black

BT7279 - HEAD LAMP WITH 8 COB LED LIGHTS

Features: ABS Head lamp • 8 Powerful COB LED lights
• Adjustable head strap • Batteries included • Size: 5.5 x 4.1 x 4cm

Branding: (A): 30 x 8mm

PP



Black



Light Green



Pale Blue

BT0070 - WATERPROOF LED FLASHLIGHT

Features: ABS Construction • Waterproof up to 50m • 3 Different light settings: low, high and flashing • Size: 14 x 4cm

Branding: (A): 35 x 8mm

PP



Black

BT0007 - LED FOLDING TEC TOOL

Features: Knife • Fishing line hole • Awl • Saw • Flathead screwdriver • Bottle opener
• LED Light • Spring loaded pliers • Nylon belt pouch included • Size: 9.5 x 3.8 x 2cm

Branding: (A): 5 x 50mm

PP

YAG



Black/Silver



ON BOTTOMS

Short, long, formal, casual or hardwearing – we have loads of work wear pants to create a lasting impression. Our range includes items for both men and woman, for formal occasions, game lodge staff and shorts for those hot summer days.



BWJ - BARRON WORKWEAR JEANS

Features: Versatile jeans with timeless straight-leg styling • Ideal for everyday wear • Front and back pockets with rivets
• Coin pocket • Metallic zip with stud button • Contrast stitching detail
Fabrication: Cotton/Polyester/Rayon/Acrylic, 14 Oz
Branding:

E

BARRON Pants - Comfort Fit										
Sizes	2XS	XS	S	M	L	XL	2XL	3XL	4XL	5XL
Waist (Inches)	28	30	32	34	36	38	40	42	44	46
1/2 Waist (cm)	37.5	40	42.5	45	47.5	50	53.5	56.5	59.5	62



Coin pocket



Back pocket detail



Black



Blue



P-DEN - MENS ORIGINAL JEANS

Features: 5-Pocket Western-style • Classic and versatile jeans • Two back pockets • Two shaped front pockets and a coin pocket • Studded detailing for strength completes the original styling

Fabrication: Enzyme washed Cotton rich denim fabric, 12.5 Oz

Branding:



BARRON Pants - Regular Fit										
Sizes	2XS	XS	S	M	L	XL	2XL	3XL	4XL	5XL
Waist (Inches)	28	30	32	34	36	38	40	42	44	46
1/2 Waist (cm)	36	38.5	41	43.5	46	48.5	51	53.5	56	58.5



Black

Blue

P-RET - MENS RETRO JEANS

Features: Metallic zip with stud button • Pockets with rivets • 5-pocket Western-style jeans • Slight faded crease and subtle sandblast effect on the front panels • This straight-leg style has double contrast stitching details

Fabrication: 55/45 Cotton Polyester fabric, 12.5 Oz

Branding:



BARRON Pants - Regular Fit										
Sizes	2XS	XS	S	M	L	XL	2XL	3XL	4XL	5XL
Waist (Inches)	28	30	32	34	36	38	40	42	44	46
1/2 Waist (cm)	36	38.5	41	43.5	46	48.5	51	53.5	56	58.5



Back pockets

Side view

Dark Denim



PS-ROG - ROGUE SHORTS

Features: Constructed waistband with belt-loops • Back patch pockets • Back yoke
 • Front fly with metal zip and shank • Curved pockets with a money pocket
 • A single patch pocket with flap • Hidden cell phone pocket on the side
 • Triple needle stitching on back rise and in leg

Fabrication: Poly Cotton fabric

Branding:

E

BARRON Pants - Regular Fit

Sizes	2XS	XS	S	M	L	XL	2XL	3XL	4XL	5XL	6XL
Waist (Inches)	28	30	32	34	36	38	40	42	44	46	48
½ Waist (cm)	37	39.5	42	44.5	47	49.5	52	54.5	57	59.5	62



Navy



Grey



Khaki



Back view



BUN-DEN - BUNDU DENIM SHORTS

Features: 5 Pocket western styling • Metallic front zip with shank closure
 • Front and back pockets with rivets • Bartacks on all stress points

Fabrication: 11Oz Cotton/Polyester/Viscose Denim

Branding:

E

SP

HP

NEW

Bundu Denim Shorts - Comfort Fit

Sizes	2XS	XS	S	M	L	XL	2XL	3XL	4XL	5XL
Waist (Inches)	28	30	32	34	36	38	40	42	44	46
½ Waist	35	37,5	40	42,5	45	47,5	50	52,5	55	57,5



Blue



Back view



Pocket detail



PA-CAR - CARGO PANTS

Features: Rugged cargo look • For everything from the great outdoors to the office
• Triple-stitched back rise • Right side hammer-loop • Bar-tacking on all the of pressure points • Deep front pockets • Side and back pockets with flaps, and concealed studs
Fabrication: 270g 100% Cotton canvas fabric, Enzyme washed

Branding:

E

BARRON Pants - Regular Fit										
Sizes	2XS	XS	S	M	L	XL	2XL	3XL	4XL	5XL
Waist (Inches)	28	30	32	34	36	38	40	42	44	46
1/2 Waist (cm)	37	39.5	42	44.5	47	49.5	52	54.5	57	59.5



Moss



Kalahari



Sand



Navy



Black



Back Pocket

PA-BRX - BRIXTON PANTS

Features: Constructed waistband with belt-loops • Back patch pockets, back yoke,
• Front fly with metal zip and shank • Curved pockets with a money pocket
• A single patch pocket with flap and cell phone side pocket • Triple-needle stitching on back-rise and in leg

Fabrication: Poly Cotton twill fabric

Branding:

E

BARRON Pants - Regular Fit											
Sizes	2XS	XS	S	M	L	XL	2XL	3XL	4XL	5XL	6XL
Waist (Inches)	28	30	32	34	36	38	40	42	44	46	48
1/2 Waist (cm)	37.5	40	42.5	45	47.5	50	52.5	55	57.5	60	62.5



Navy



Grey



Khaki



PA-UCH - POLY COTTON CHINO

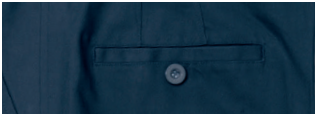
Features: Easy care garment • Durable and classic • Semi-formal loop • Top-stitched for added durability • Blended fabric resists creasing and holds colour • Classic pleated chino styling with turn-ups
Fabrication: 245g Non-crease blended Poly Cotton fabric
Branding:

E

BARRON Pants - Regular Fit										
Sizes	2XS	XS	S	M	L	XL	2XL	3XL	4XL	5XL
Waist (Inches)	28	30	32	34	36	38	40	42	44	46
1/2 Waist (cm)	37	39.5	42	44.5	47	49.5	52	54.5	57	59.5



Fabric detail



Golfer-finish back pockets



Black

Navy

Khaki

Stone

PA-CHI - COTTON CHINO

Features: Classic and versatile pleated chino trousers • Constructed waistband • Pleated front • Top-stitching for added durability
• Hem with turn-ups
Fabrication: 225g 100% Cotton twill fabric
Branding:

E

BARRON Pants - Regular Fit										
Sizes	2XS	XS	S	M	L	XL	2XL	3XL	4XL	5XL
Waist (Inches)	28	30	32	34	36	38	40	42	44	46
1/2 Waist (cm)	37	39.5	42	44.5	47	49.5	52	54.5	57	59.5



Fabric detail



Golfer-finish back pockets



Black

Navy

Khaki

Stone





PA-CLA - MENS STATEMENT CLASSIC PANTS

Features: Durable fabric • Front pleated styling • Easy care garment • Classic trousers ideal for uniform and everyday use • Two front and back pockets • Constructed waistband • Turn-ups

Fabrication: 100% Polyester

Branding:

E

BARRON Pants - Regular Fit										
Sizes	2XS	XS	S	M	L	XL	2XL	3XL	4XL	5XL
Waist (Inches)	28	30	32	34	36	38	40	42	44	46
1/2 Waist (cm)	37	39.5	42	44.5	47	49.5	52	54.5	57	59.5



Navy



Black

L-SS - LADIES STATEMENT SKIRT

Features: Classic pencil styling • Easy care garment • Chic back slit • Fashionable corporate look • Ideal uniform element to go with many top options in the BARRON range • Constructed waistband with elasticated inserts in larger sizes

Fabrication: 100% Polyester

Branding:

E

BARRON Skirt - Regular Fit										
Sizes	2XS	XS	S	M	L	XL	2XL	3XL	4XL	5XL
Waist (Inches)	28	30	32	34	36	38	40	42	44	46
1/2 Waist (cm)	32.5	35	37.5	40	42.5	45	47.5	50	52.5	55



Navy



Black

LP-SS - LADIES STATEMENT STRETCH PANTS

Features: Stretch for comfortable fit • Easy care garment • Flattering ladies' trousers • Feminine flared leg styling • Slightly lower waistband with one button • Can be worn straight from the office to a night out on the town

Fabrication: Poly/Rayon/Spandex blended fabric

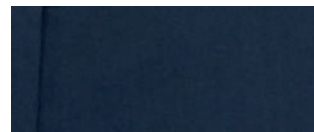
Branding:

E

BARRON Ladies Pants - Regular Fit									
Sizes	XS	S	M	L	XL	2XL	3XL	4XL	5XL
Waist (Inches)	30	32	34	36	38	40	42	44	46
1/2 Waist (cm)	37	39	41	43.5	46	49	52	55.5	59



One bottom



Fabric detail



Navy



Black



Stone

LP-EVE - LADIES EVE STRETCH JEANS

Features: Straight-leg • Flattering fit • Stretch fabric • Perfect for any body type • Two front curved pockets with a money pocket • Constructed waistband • Back pockets with profile stitching • Metallic zip opening • Rivets are added at all stress points for durability

Fabrication: 86/11/3 Cotton Polyester Lycra fabric

Branding:

E

BARRON Ladies Pants - Easy Fit									
Sizes	2XS	XS	S	M	L	XL	2XL	3XL	4XL
Waist (Inches)	28	30	32	34	36	38	40	42	44
1/2 Waist (cm)	35	37	39	41	43.5	46	49	52	55.5



Black



Blue

A man in a khaki uniform and cap is scanning a large cardboard box with a handheld device. The background is a plain, light-colored wall.

ON

OUTDOOR & LEISURE

Our uniforms are created to ensure every garment delivers a consistent brand image no matter the working environment. For company retreats, team building activities or those hardworking game rangers **ON** safari - we've designed a range tough enough to withstand the African bush and stylish enough to wear anywhere.

LO-OUT - MENS OUTBACK SHIRT

Features: Versatile roll-up sleeve styling • Mesh inner shoulder yoke • Two patch pockets with velcro flaps

• Back yoke • Vents • Double button cuffs • Double top-stitched finishes • Eyelets on the pocket

Fabrication: 100% Cotton fabric

Branding:

E

Mens Lounge Shirt - Regular Fit								
Sizes	S	M	L	XL	2XL	3XL	4XL	5XL
Collar	38	40	42	44	46	48	50	52
1/2 Chest (cm)	52	57	62	67	72	77	82	87



Stone



Khaki



Granite



White

LL-OUT - LADIES OUTBACK BLOUSE

Features: Stylish ladies' fit with curved hemline • Short sleeve roll-up sleeve styling • Flattering feminine outdoor look

• Two front pockets • Back yoke detail • Tapered side seams • Tonal buttons are used throughout

Fabrication: 100% Cotton fabric

Branding:

E

Ladies Blouse - Regular Fit									
Sizes	XS	S	M	L	XL	2XL	3XL	4XL	5XL
1/2 Chest (cm)	41	45	49	53	57	61	65	69	73



Stone



Khaki



Misty Pink



White



LO-BUSH - MENS PLAIN BUSH SHIRT

Features: Classic South African favourite • Two pleated pockets with flaps • Double-layer yoke with back box pleat • Double-needle finishing for strength and durability • Equipped with metallic buttons
Fabrication: 100% Cotton twill fabric

Branding:

E

Mens Lounge Shirt - Regular Fit								
Sizes	S	M	L	XL	2XL	3XL	4XL	5XL
Collar	38	40	42	44	46	48	50	52
1/2 Chest (cm)	52	57	62	67	72	77	82	87



Navy



Airforce Blue



Dusk Blue



Navy



Airforce Blue



Dusk Blue



Safari



Kalahari



Stone



Safari



Stone



Pocket detail

LL-BUSH - LADIES PLAIN BUSH SHIRT

Features: Ladies' blouse with tapered side seams • Shaped panels for a feminine fit • Metal buttons • Two small chest pockets • Sleeves with turn-ups • Curved hem
Fabrication: 100% Cotton twill fabric

Branding:

E

Ladies Blouse - Regular Fit								
Sizes	S	M	L	XL	2XL	3XL	4XL	5XL
1/2 Chest (cm)	45	49	53	57	61	65	69	73



LLO-LBUSH - LADIES BUSH SHIRT LONG SLEEVE

Features: Ladies blouse with tapered side seams • Shaped panels for a feminine fit
 • Metal buttons • Two small chest pockets • Curved hem • Double needle finishing for strength and durability • Long sleeves with adjustable cuffs
Fabrication: 100% Cotton twill fabric

Branding:

E

NEW

Ladies Blouse - Regular Fit								
Sizes	S	M	L	XL	2XL	3XL	4XL	5XL
1/2 Chest (cm)	45	49	53	57	61	65	69	73



Navy



Stone



Pocket detail



Button detail



LO-LBUSH - MENS BUSH LONG SLEEVE SHIRT

Features: Curved hem and double button cuffs • South African inspired lounge shirt
 • Two pleated pockets with flaps • Double-layer yoke with box pleat • Double-needle top-stitching throughout • Equipped with extra strength metallic buttons
Fabrication: 100% Cotton twill fabric

Branding:

E

Mens Lounge Shirt - Regular Fit								
Sizes	S	M	L	XL	2XL	3XL	4XL	5XL
Collar	38	40	42	44	46	48	50	52
1/2 Chest (cm)	52	57	62	67	72	77	82	87



Stone



Safari



Navy



Airforce Blue



LO-BUSH - TWO TONE BUSH SHIRT

Features: Reinforced double-needle stitching • Classic South African favourite
• Includes two pleated pockets with flaps • Double-layer yoke with back box pleat
• Double-needle finishing for strength and durability

Fabrication: 100% Durable Cotton twill fabric

Branding:

E

Mens Lounge Shirt - Regular Fit								
Sizes	S	M	L	XL	2XL	3XL	4XL	5XL
Collar	38	40	42	44	46	48	50	52
1/2 Chest (cm)	52	57	62	67	72	77	82	87



Stone/Safari



Stone/Navvy



Stone/Airforce Blue



Black/Stone



Navy/Stone



Kalahari/Moss



Kalahari/Moss



Pocket with flap



LLO-TR - LADIES TRAIL BLOUSE

Features: Mesh underarm insert • Easy care garment • Flattering ladies' outdoor garment with feminine styling • Versatile roll-up sleeves
• Two chest pockets • Back neck yoke • Tapered side seams
• Breathable and water-resistant fabric

Fabrication: 100% Lightweight nylon fabric

Branding:

E

Ladies Blouse - Regular Fit								
Sizes	S	M	L	XL	2XL	3XL	4XL	5XL
1/2 Chest (cm)	45	49	53	57	61	65	69	73



Navy



Mountain Blue



Desert Tan



Fossil

LO-TR - MENS TRAIL SHIRT

Features: Mesh inner back yoke • Easy care garment • Durable garment that is great for an active lifestyle or the outdoors • Chest pockets • Double button cuffs
• Double-needle finish for extra strength and durability • Versatile roll-up sleeves styling • Breathable and water-resistant fabric

Fabrication: 100% Lightweight nylon fabric

Branding:

E

Mens Lounge Shirt - Regular Fit								
Sizes	S	M	L	XL	2XL	3XL	4XL	5XL
Collar	38	40	42	44	46	48	50	52
1/2 Chest (cm)	52	57	62	67	72	77	82	87



Navy



Mountain Blue



Desert Tan



Fossil



Grey



Navy



Blue



Khaki

LO-DEL - DELTA SHIRT

Features: Bar-tacking on pressure points • Easy care garment • Versatile lightweight shirt • Mesh back yoke • Underarm vents • Constructed placket • Patch pockets with velcro flaps on the chest and sleeve • Styled back yoke with box pleat

• Double top-stitching throughout

Fabrication: 100% Nylon with UV finish

Branding:

E

Mens Lounge Shirt - Regular Fit								
Sizes	S	M	L	XL	2XL	3XL	4XL	5XL
Collar	38	40	42	44	46	48	50	52
1/2 Chest (cm)	52	57	62	67	72	77	82	87



Mesh detail



Chest pocket detail



Button detail

LO-MAV - MAVERICK SHIRT

Features: Casual shirt with versatile roll-up sleeves • Patch pockets on the chest feature flaps and velcro • Back ventilation • Extended back collar to avoid sunburn • Distinctive triple-needle top-stitching on shoulders, armholes and yoke • Curve hem-line

Fabrication: 100% Cotton with enzyme wash

Branding:

E

Mens Lounge Shirt - Regular Fit

Sizes	S	M	L	XL	2XL	3XL	4XL	5XL
Collar	38	40	42	44	46	48	50	52
½ Chest (cm)	52	57	62	67	72	77	82	87



Dusk Blue



Khaki



Stone



Extended back collar

FI-JAC - FISHING JACKET

Features: Two chest pockets with subdivisions • Inner pockets with water protectors • Zippered front pockets • Multi-purpose action garment • Full front zip

Fabrication: 100% Cotton twill fabric

Branding:

E

SP

HP

Mens Jacket - Easy Fit

Sizes	S	M	L	XL	2XL	3XL	4XL	5XL
½ Chest (cm)	55	58	61	64	67	70	73	76



Hunter's Green



Stone



Black



Navy



TST145B - 145G BARRON CREW NECK T-SHIRT

Features: Shoulder-to-shoulder seam taping for improved comfort and durability • Dyed with reactive dyes • Double top-stitched hem and sleeves • Double neck rib with top-stitching • Generous fit

Fabrication: 145g 100% Carded Cotton, single jersey fabric

Branding:

E **SP** **HP**

Available in:

	Red		Sapphire		Yellow		Sky Blue
	Purple		Pink		Royal		Bottle
	Emerald		Navy		Khaki		Maroon
	Orange		Apple		White		Black
	Dark Grey/ Melange						

T-Shirt - Comfort Fit								
Sizes	S	M	L	XL	2XL	3XL	4XL	5XL
1/2 Chest (cm)	51	54	57	60	63	66	69	72



TSL145B - 145G LONG SLEEVE T-SHIRT

Features: Double-needle finish on the sleeves and bottom hem • Shoulder-to-shoulder taping • Lycra-reinforced neck rib • Lightweight • Dyed with reactive dyes

Fabrication: 145g 100% Carded Cotton, single jersey fabric

Branding:

E **SP** **HP**

Available in:

	Navy		Royal		Orange		Red
	White		Black		Emerald		Dark Grey/ Melange
	Khaki						

T-Shirt - Comfort Fit								
Sizes	S	M	L	XL	2XL	3XL	4XL	5XL
1/2 Chest (cm)	51	54	57	60	63	66	69	72





TST135B - 135G BARRON POLYESTER T-SHIRT

Features: Crew neckline • Double top-stitching on the hem and sleeves • Single-stitched self-fabric neck tape • Raglan single top-stitched sleeves • Generous fit

Fabrication: 135g 100% Polyester moisture management fabric: e-Dri

Branding:

E HP

Available in:

	Royal		Navy		Red		Yellow
	Blue		Safety Orange		Lumo Green		Black
	Safety Yellow		White				

T-Shirt - Comfort Fit									
Sizes	XS	S	M	L	XL	2XL	3XL	4XL	5XL
1/2 Chest (cm)	48	51	54	57	60	63	66	69	72



TSL135B - 135G BARRON LONG SLEEVE POLYESTER T-SHIRT

Features: Crew neck T-Shirt • Raglan sleeves • Self-fabric neck tape • Generous cut • Double top-stitched hem • Lightweight • Ideal for sublimation print

Fabrication: 135g 100% Polyester moisture management fabric: e-Dri

Branding:

E HP

Available in:

	Blue		Navy		Lumo Green		Red
	Black		White		Safety Orange		Safety Yellow

T-Shirt - Comfort Fit									
Sizes	XS	S	M	L	XL	2XL	3XL	4XL	5XL
1/2 Chest (cm)	48	51	54	57	60	63	66	69	72





LAS-175B - 175G MENS BARRON PIQUÉ KNIT GOLFER

Features: Double-needle finish on sleeves and hem • BARRON trademark two ridge collar • Supplied with a loose pocket • Three button placket • Self-fabric neck tape on collar seam

Fabrication: 175g 65/35 Poly Cotton fabric with anti-pill finish

Branding:

E SP HP

Mens Golfer - Econo Fit								
Sizes	S	M	L	XL	2XL	3XL	4XL	5XL
1/2 Chest (cm)	53	55.5	58	60.5	63	65.5	68	70.5

Available in:

Royal	Pink	Bottle	Yellow
Navy	Orange	Red	White
Black	Emerald	Grey	Khaki
Purple	Maroon	Apple	Military Green
Lime	Ice Mélange	Blue	Atlantic Blue
Surf Blue	Jade	Papaya	

L-175 - LADIES 175G BARRON PIQUÉ KNIT GOLFER

Features: BARRON trademark two ridge collar • Three button placket • Side slits • Set sleeves • Double-needle finish on sleeves and hem • Feminine fit

Fabrication: 175g 65/35 Poly Cotton fabric with anti-pill finish

Branding:

E SP HP

Ladies Golfer - Regular Fit									
Sizes	XS	S	M	L	XL	2XL	3XL	4XL	5XL
1/2 Chest (cm)	46	49	51.5	54	56.5	59	61.5	64	66.5

Available in:

Royal	Pink	Yellow	Navy
Orange	White	Red	Black
Khaki	Lime	Emerald	Blue
Atlantic Blue	Grey	Surf Blue	Raspberry Pink

ON SITE

BRANDING FACILITY

Customise your workwear.



Reflective Heat Transfer



Embroidery



Screen Print



Heat Transfer

