



THE 2018/19 LEADING BRAND COLLECTION



WWW.PROACTIVECLOTHING.COM



Proactive[®]
LEADING BRANDS

UNIFORMS | PROMOTIONAL CLOTHING | TEAMWEAR | CORPORATE | MEDICAL | WORKWEAR | SERVICE & HOSPITALITY | CHEF | BEAUTY

Proactive[®]

LEADING BRANDS

The Proactive Range offers you LEADING BRANDS that bring innovation, practicality and style! Our international range of brands include Canterbury, Speedo, Columbia and Skins. Scan the QR codes below to view the range available online!



The 110-year-old brand is steeped in rich history and is recognised as the leading rugby brand in the world. Canterbury has produced jerseys for World Champions, South Africa and The All Blacks, and is well known for hard wearing and innovative sports kits. Our stocked Canterbury range offers you an array of "hot" items.

Scan now to view the entire range on offer.



For over 89 years, Speedo has been inspiring swimmers with innovative technology and style that stays ahead of the game. Since its inception in 1928, the brand has elevated in stature and popularity becoming the leader in swimming gear internationally, and the first choice for many Olympic medalists. The Proactive Speedo range has been carefully selected for swim teamwear which can be co-branded for schools, universities, swimming teams and clubs.





Born and raised in Portland, Oregon, Columbia Sportswear Company has been making gear for more than 70 years so you can enjoy the outdoors for longer. Columbia is committed to designing innovative and functional products for consumers who participate in a wide range of outdoor activities, enabling them to pursue their passions longer and in greater comfort by keeping them warm or cool, dry and protected. Quality and durability are important aspects of this, and Columbia has vigorous material and product quality testing standards in place to ensure that the products are made to last. This helps to extend the life of the garments.



SKINS provides DNAmic Gradient Compression across the major muscle groups, with the highest compression applied at the calf and gradually decreasing towards the heart. The Compression Technology is applied in a targeted dynamic manner, to maintain the integrity of the compression during exercise. Their range is suitable for running and all kinds of training. This compression level can be worn over medium to long training sessions.

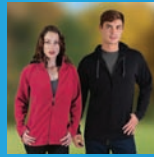


01



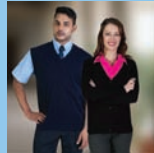
JACKETS

19



FLEECE

41



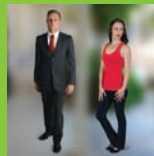
KNITWEAR

47



FORMAL COLLECTION

55



PANTS & TROUSERS

69



SKIRTS & DRESSES

79



SHIRTS & BLOUSES

115

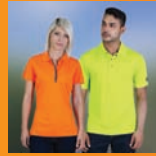


T-SHIRTS & TOPS

PLEASE NOTE:

- Products depicted in this catalogue may vary slightly in colour, shade and fabrics.
- Please view our online catalogue (www.proactiveclothing.com) to view the status of a product's stock availability.
- Redundant items will be marked "While stocks last!"

133



POLO & GOLF SHIRTS

177



WORKWEAR

187



SERVICE COLLECTION

197



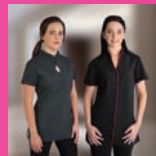
MEDICAL COLLECTION

209



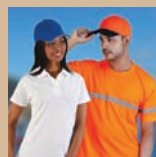
CHEF COLLECTION

215



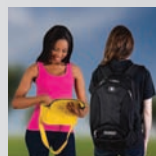
BEAUTY COLLECTION

221



HEADWEAR

233



BAGS

SIZING INFORMATION:

** Please note: We recommend the use of sizing samples in order to ensure the most accurate sizing of our styles.*

• CLASSIC FIT

A traditional fit to provide ease of wear and comfort

• RELAXED FIT

A comfortable, roomy fit

• SLIM FIT

A snug, fashionable fit

• SPORTS FIT

A classic fit modified for ease of movement

• TAILORED FIT

A closer fit designed to match the body's curves and flatter the female figure

STEP INTO STYLE THIS YEAR WITH

Proactive[®]

LEADING BRANDS



Welcome to an exciting range of quality products offered by our leading brands. Let Proactive Clothing help build your brand's unique look and ethos by choosing from our large range of products catered to your industry needs. Do you have a great idea and need help in displaying and presenting a uniform or promotional concept? Speak to your distributor about storyboards or other visual aids that Proactive Clothing can generate for you in order to showcase your idea!



Proactive-Clothing



Proactive_C



proactiveclothing

JACKETS





CLASSIC SOFTSHELL JACKET

Mens - Product Code: **MSS1**



Ladies - Product Code: **LSS1**



Black

Dark olive

Royal

Signal red

Navy

FABRIC: Poly pongee with inner microfibre fleece

ADULT SIZES: S - M - L - XL - 2XL - 3XL - 4XL - 5XL

FEATURES:

- Stand up collar
- Inner fleece lining
- Utility zip on mens
- Durable full zip and pocket zips
- Ladies has a classic feminine fit

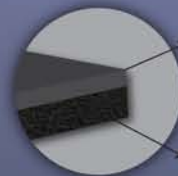
Utility zip on mens



Adjustable velcro cuffs on sleeves



Water resistant poly pongee exterior



Insulating microfibre fleece interior



WASH & WEAR



WATER RESISTANT



WIND RESISTANT

FOR SPECS AND MORE DETAILS
SCAN NOW





FUSION SOFTSHELL JACKET

Mens - Product Code: **MFS1**



Ladies - Product Code: **LFS1**

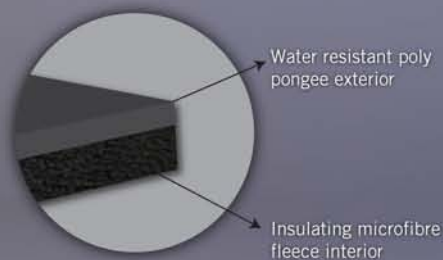


FABRIC: Poly pongee with inner microfibre fleece

ADULT SIZES: S - M - L - XL - 2XL - 3XL

FEATURES:

- Stand up collar
- Adjustable toggles
- Inner fleece lining and pockets
- Durable full zip and pocket zips
- Men's design has adjustable velcro cuffs on sleeves
- Ladies design has semi-elasticated cuffs with wind-stop inner sleeve



FOR SPECS AND MORE DETAILS
SCAN NOW





ZIP OFF SLEEVE SOFTSHELL JACKET

Mens - Product Code: **GMSS2**



Ladies - Product Code: **GLSS2**



Black



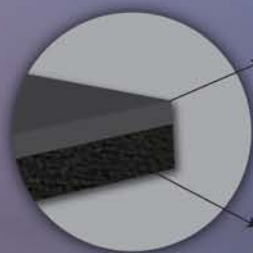
Navy

FABRIC: Poly pongee with inner microfibre fleece

ADULT SIZES: S - M - L - XL - 2XL - 3XL - 4XL - 5XL

FEATURES:

- Stand up collar
- Inner fleece lining
- Durable full zip and zip seal pockets



Water resistant poly pongee exterior

Insulating microfibre fleece interior



FOR SPECS AND MORE DETAILS
SCAN NOW





BODYWARMER

Mens - Product Code: **MBW1**



Ladies - Product Code: **LBW1**



Black

FABRIC: Poly pongee with water resistant coating

ADULT SIZES: S - M - L - XL - 2XL - 3XL - 4XL - 5XL

FEATURES:

- Water resistant PU coating
- Grey polyester inner lining
- Zip seal and fleece lined pockets
- Reversed zip and side waist toggles



Pongee fabric detail

FOR SPECS AND MORE DETAILS
SCAN NOW



WASH & WEAR



WATER RESISTANT



WIND RESISTANT



ZIP OFF SLEEVE PUFFER JACKET

Mens - Product Code: **MPJ1**



Ladies - Product Code: **LPJ1**



Navy



Black



FABRIC: Polytech

ADULT SIZES: S - M - L - XL - 2XL - 3XL - 4XL - 5XL

FEATURES:

- Padding for insulation
- Stand up collar
- Durable full zip and pocket zips
- Removable sleeves allow you to use this jacket as a puffer bodywarmer



FOR SPECS AND MORE DETAILS
SCAN NOW





GC TECH ALL WEATHER JACKET

Mens - Product Code: **AWJ3**



Ladies - Product Code: **LAWJ3**



Black/graphite

Black/cyan

Black/lime

Black/red

FABRIC: Water resistant nylon with graphite inner towelling

ADULT SIZES: S - M - L - XL - 2XL - 3XL

FEATURES:

- Contrast zip seal pockets
- Adjustable velcro elasticated cuffs
- Superior quality graphite towelling for warmth



Inner graphite towelling lining

FOR SPECS AND MORE DETAILS
SCAN NOW



Mac Jack®



ALL WEATHER MACJACK

Product Code: **AWJ202**



FABRIC: Water resistant nylon with inner towelling

ADULT SIZES: S - M - L - XL - 2XL - 3XL - 4XL - 5XL

FEATURES:

- Chunky durable zip
- Hem with drawstring
- 1x1 Ribbed, water repellent cuffs
- Zip away hood with toggles and drawstring
- High quality inner towelling lining for warmth and comfort



YOUTH SIZING AVAILABLE:



Page 16

FOR SPECS AND MORE DETAILS
SCAN NOW



YOUTH ALL WEATHER MACJACK



Product Code: **KAW202**

FABRIC: Water resistant nylon with inner toweling

YOUTH SIZES: 4/5yr - 6/7yr - 8/9yr - 10/11yr - 12/13yr

FEATURES:

- Chunky durable zip
- Hem with drawstring
- 1x1 Ribbed, water repellent cuffs
- Zip away hood with toggles and drawstring
- High quality inner toweling lining for warmth and comfort



WASH & WEAR



WIND RESISTANT



WATER RESISTANT

FOR SPECS AND MORE DETAILS
SCAN NOW



MacJack®

APEX JACKET



Reflective trim detail



Fold away hood



Navy



Black

Product Code: **APJ1**

FABRIC: 100% Nylon woven jacket with acrylic coating for water resistance

ADULT SIZES: S - M - L - XL - 2XL - 3XL

FEATURES:

- Water resistant coating
- Reflective trim on pockets and neck
- Adjustable toggles and concealed hood
- Semi-elasticated cuffs with velcro adjustment



MAC[®]
ALL WEATHER

FOR SPECS AND MORE DETAILS
SCAN NOW



PADDED PARKA JACKET



Product Code: **PJU202**

FABRIC: 100% Nylon water resistant honeycomb tason fabric

ADULT SIZES: S - M - L - XL - 2XL - 3XL

FEATURES:

- Padded for superior insulation
- Adjustable velcro cuffs on sleeves
- Bungee cord at hem and zip seal pockets

MAC[®]
ALL WEATHER



FOR SPECS AND MORE DETAILS
SCAN NOW



FLEECE





CLASSIC MICROFIBRE FLEECE

Mens - Product Code: **PFM3**



Ladies - Product Code: **LPM201**



Royal Signal red Black Graphite Maroon Navy Dark olive Stone

FABRIC: Anti-pill microfibre polar fleece - 240g

ADULT SIZES: S - M - L - XL - 2XL - 3XL - 4XL - 5XL

FEATURES:

- Stylish zipper tags
- Stand up collar with full zip
- Snug comfortable fit with front pockets
- Anti-pill microfibre fleece traps heat and releases body moisture



FOR SPECS AND MORE DETAILS
SCAN NOW



VANGARD[®]

DUCHESS[®]



BEAU FLEECE - LONG SLEEVE



Product Code: **BMJ4**

FABRIC: Anti-pill microfibre polar fleece - 240g

ADULT SIZES: XS - S - M - L - XL - 2XL - 3XL - 4XL - 5XL

FEATURES:

- Stylish stand up collar
- Full zip with zipper tag
- Outer side and internal pockets
- High quality anti-pill microfibre fleece traps heat and releases body moisture



BELLE FLEECE - LONG SLEEVE



Product Code: **BLJ4**

FABRIC: Anti-pill microfibre polar fleece - 240g

ADULT SIZES: XS - S - M - L - XL - 2XL - 3XL - 4XL - 5XL

FEATURES:

- Stylish stand up collar
- Full zip with zipper tag
- Outer side and internal pockets
- High quality anti-pill microfibre fleece traps heat and releases body moisture



FOR SPECS AND MORE DETAILS
SCAN NOW





ZIP OFF SLEEVE POLAR FLEECE

Mens - Product Code: **PFQ203**



Ladies - Product Code: **LFQ3**



Black

Maroon

Navy

Stone

FABRIC: Anti-pill polar fleece - 240g

ADULT SIZES: S - M - L - XL - 2XL - 3XL - 4XL - 5XL

FEATURES:

- Rubber zip puller
- Stylish stand up collar
- Zip up cellphone pocket
- High quality anti-pill microfibre fleece traps heat and releases body moisture



FOR SPECS AND MORE DETAILS
SCAN NOW





CLASSIC HOODIE

Mens - Product Code: **PFH2**



Ladies - Product Code: **LFH2**



Navy



Charcoal mélangé



Black

FABRIC: Cotton rich (80/20) brushed fleece

ADULT SIZES: S - M - L - XL - 2XL - 3XL

FEATURES:

- Front pockets
- Matching drawstring
- Ribbed waistband and cuffs
- Anti-pill brushed fleece traps heat and releases body moisture



FOR SPECS AND MORE DETAILS
SCAN NOW





CLASSIC ZIP UP HOODIE

Mens - Product Code: **PFH3**



Ladies - Product Code: **LFH3**



Navy



Charcoal mélange



Black

FABRIC: Cotton rich (80/20) brushed fleece

ADULT SIZES: S - M - L - XL - 2XL - 3XL

FEATURES:

- Front pockets
- Contrast drawstring
- Full zip with zip puller
- Ribbed waistband and cuffs
- Anti-pill brushed fleece traps heat and releases body moisture



FOR SPECS AND MORE DETAILS
SCAN NOW





ZIP UP FLEECE HOODIE

Mens - Product Code: **PFH1**



Black/grey



Graphite/grey



Navy/grey

Ladies - Product Code: **LFH1**



Pink/grey



Sky/grey

FABRIC: Cotton rich (60/40) - 255g

ADULT SIZES: S - M - L - XL - 2XL - 3XL

FEATURES:

- Front pockets
- Ribbed waistband and cuffs
- Matching drawstring and zip
- Anti-pill brushed fleece traps heat and releases body moisture



WASH & WEAR



WIND RESISTANT

FOR SPECS AND MORE DETAILS
SCAN NOW



VANGARD[®]

DUCHESS[®]



BEAU FLEECE - SLEEVELESS



Product Code: **BMJ1**

FABRIC: Anti-pill microfibre polar fleece - 240g

ADULT SIZES: XS - S - M - L - XL - 2XL - 3XL - 4XL - 5XL

FEATURES:

- Stylish stand up collar
- Full zip with zipper tag
- Outer side and internal pockets
- High quality anti-pill microfibre fleece traps heat and releases body moisture



BELLE FLEECE - SLEEVELESS



Product Code: **BLJ1**

FABRIC: Anti-pill microfibre polar fleece - 240g

ADULT SIZES: XS - S - M - L - XL - 2XL - 3XL - 4XL - 5XL

FEATURES:

- Stylish stand up collar
- Full zip with zipper tag
- Outer side and internal pockets
- High quality anti-pill microfibre fleece traps heat and releases body moisture



FOR SPECS AND MORE DETAILS
SCAN NOW



DOUBLE-SIDED MICROFIBRE POLAR FLEECE



Product Code: **PFM201**

FABRIC: Anti-pill microfibre polar fleece - 380g

ADULT SIZES: S - M - L - XL - 2XL - 3XL - 4XL - 5XL

FEATURES:

- Inner pockets
- Stand up collar
- Pockets with zip seal
- Full zip with stylish zipper tag
- Double-sided fleece for extra warmth
- Contrast binding along zip edges and collar
- Elastic drawstring with waist toggles for easy adjustment



WASH & WEAR



WIND RESISTANT

FOR SPECS AND MORE DETAILS
SCAN NOW




HIGHLAND BROOK[®]

TWO TONE MICROFIBRE POLAR FLEECE



Product Code: **PFM202**

FABRIC: Anti-pill microfibre polar fleece - 240g

ADULT SIZES: S - M - L - XL - 2XL - 3XL - 4XL - 5XL

FEATURES:

- Inner pockets
- Stylish zipper tags
- Stand up collar with full zip
- Utility sleeve pocket with zip
- Contrast side panels and inner collar
- Anti-pill fleece traps heat and releases body moisture


HIGHLAND BROOK®



FOR SPECS AND MORE DETAILS
SCAN NOW



SLEEVELESS MICROFIBRE POLAR FLEECE



Product Code: **PFM205**

FABRIC: Anti-pill microfibre polar fleece - 240g

ADULT SIZES: S - M - L - XL - 2XL - 3XL - 4XL - 5XL

FEATURES:

- Easy grip zipper tag
- Stylish grey contrasting
- Stand up collar with full zip
- Snug comfortable fit with front pockets
- Anti-pill microfibre polar fleece traps heat and releases body moisture



FOR SPECS AND MORE DETAILS
SCAN NOW




HIGHLAND BROOK®

LIGHTWEIGHT POLAR FLEECE



Product Code: **PFT201**

FABRIC: Lightweight anti-pill polar fleece -180g

ADULT SIZES: S - M - L - XL - 2XL - 3XL

FEATURES:

- Concealed quarter zip
- Contrast on reverse of collar
- Overlock stitching on front panel
- Rapid drying fabric that regulates heat and releases body moisture

HIGHLAND BROOK®



FOR SPECS AND MORE DETAILS
SCAN NOW





WASH & WEAR



WIND RESISTANT

POLAR FLEECE SCARVES



Product Code: **BNV203**

FABRIC: Anti-pill microfibre polar fleece

ADULT SIZES: 190cm length

FEATURES:

- Self fabric tassles
- Anti-pill polar fleece traps heat for warmth and insulation

FOR SPECS AND MORE DETAILS
SCAN NOW



POLAR FLEECE GLOVES



Product Code: **BNV204**

FABRIC: Anti-pill microfibre polar fleece

ADULT SIZES: S/M and L/XL

FEATURES:

- Elasticated wrists
- Anti-pill polar fleece traps heat for warmth and insulation

FOR SPECS AND MORE DETAILS
SCAN NOW



POLAR FLEECE BEANIES



Product Code: **BNV202**

FABRIC: Anti-pill polar fleece - 240g

ADULT SIZES: One size fits all

FEATURES:

- Anti-pill polar fleece traps heat for warmth
- Panelled with top stitching for reinforcement

FOR SPECS AND MORE DETAILS
SCAN NOW



YOUTH QUARTER ZIP FLEECE



Product Code: **KQZ1**

FABRIC: Anti-pill polar fleece - 240g

YOUTH SIZES: 4-5y, 6-7y, 8-9y, 10-11y, 12-13y

FEATURES:

- Front pockets
- Stand up collar
- Durable quarter zip
- Gathered elasticated sleeve at wrist
- Anti-pill breathable polar fleece traps heat and releases body moisture



FOR SPECS AND MORE DETAILS
SCAN NOW



KNITWEAR





CLASSIC JERSEY



Product Code: **JRI201** - Sleeveless
JRI202 - Long sleeve

FABRIC: 10 gauge acrylic yarn

ADULT SIZES: S - M - L - XL - 2XL - 3XL - 4XL - 5XL

FEATURES:

- V-neck
- Ribbed neckline and waistline
- Long sleeve has ribbed cuffs
- Sleeveless has ribbed armholes



FOR SPECS AND MORE DETAILS
SCAN NOW



LADIES CLASSIC CARDIGAN



Product Code: **LKC1**

FABRIC: Superior quality soft-feel acrylic yarn

ADULT SIZES: S - M - L - XL - 2XL - 3XL

FEATURES:

- V-neck
- Ribbed hem and cuffs
- Classic and refined style
- Superior quality yarn with a soft-feel finish



FOR SPECS AND MORE DETAILS
SCAN NOW



DUCHESS[®]



KELLY CARDIGAN



Product Code: **KEJ4KNI**

FABRIC: Superior quality soft-feel acrylic yarn

ADULT SIZES: XS - S - M - L - XL - 2XL - 3XL - 4XL - 5XL

FEATURES:

- V-neck
- Ribbed hem and cuffs
- Classic and refined style
- Extended length for a comfortable fit
- Superior quality yarn with a soft-feel finish



FOR SPECS AND MORE DETAILS
SCAN NOW



NINA CARDIGAN



Product Code: **NIJ4KNI**

FABRIC: Superior quality soft-feel acrylic yarn

ADULT SIZES: XS - S - M - L - XL - 2XL - 3XL - 4XL - 5XL

FEATURES:

- V-neck
- Ribbed hem and cuffs
- Classic and refined style
- Superior quality yarn with a soft-feel finish



FOR SPECS AND MORE DETAILS
SCAN NOW



UPMARKET JERSEY



Product Code: **JR15** - Sleeveless
JR16 - Long sleeve

FABRIC: 70% Acrylic / 30% wool blend with a soft feel

ADULT SIZES: S - M - L - XL - 2XL - 3XL - 4XL - 5XL

FEATURES:

- V-neck design
- Ribbed neckline and waistline
- Long sleeve has ribbed cuffs
- Sleeveless has ribbed armholes
- High quality wool blend has a soft feel

GC GLOBAL CITIZENTM



FOR SPECS AND MORE DETAILS
SCAN NOW



FORMAL COLLECTION



DUCHESS[®]

VANGARD[®]



JOHN WAISTCOAT



Product Code: **JOW1MST**- Black, Navy
JOW1MEL - Charcoal

FABRIC: Mini matt - 100% polyester

ADULT SIZES: S - M - L - XL - 2XL - 3XL - 4XL - 5XL

FEATURES:

- Jetted pockets
- Classy engraved VANGARD buttons
- High quality mini matt fabric with wash & wear properties

PAULA WAISTCOAT



Product Code: **PAW1MST** - Black, Navy
PAW1MEL - Charcoal

FABRIC: Mini matt - 100% polyester

ADULT SIZES:

28 - 30 - 32 - 34 - 36 - 38 - 40 - 42 - 44 - 46 - 48 - 50 - 52 - 54

FEATURES:

- Jetted pockets
- Panelled waistline
- Classy engraved DUCHESS buttons
- High quality mini matt fabric with wash & wear properties

FOR SPECS AND MORE DETAILS
SCAN NOW



DUCHESS[®]



FREYA GILET



Product Code: **FRJ1MST** - Black, Navy
FRJ1MEL - Charcoal

FABRIC: Mini matt - 100% polyester

ADULT SIZES:

28 - 30 - 32 - 34 - 36 - 38 - 40 - 42 - 44 - 46 - 48 - 50 - 52 - 54

FEATURES:

- Long length with side pockets
- Ideally worn over a blouse or top
- High quality mini matt fabric with wash & wear properties



FOR SPECS AND MORE DETAILS
SCAN NOW



ROSA JACKET - SHORT SLEEVE



Product Code: **ROJ2MST**

FABRIC: Mini matt - 100% polyester

ADULT SIZES:

28 - 30 - 32 - 34 - 36 - 38 - 40 - 42 - 44 - 46 - 48 - 50 - 52 - 54

FEATURES:

- Fully lined
- Jetted pockets
- Classy engraved DUCHESS buttons
- High quality mini matt fabric with wash & wear properties



FOR SPECS AND MORE DETAILS
SCAN NOW



DUCHESS[®]

VANGARD[®]



PETER JACKET



Product Code: **PEJ4MST** - Black, Navy
PEJ4MEL - Charcoal

FABRIC: Mini matt - 100% polyester

ADULT SIZES:

32 - 34 - 36 - 38 - 40 - 42 - 44 - 46 - 48 - 50 - 52 - 54

FEATURES:

- Fully lined
- Classic tailored look
- Inner and jetted pockets
- High quality mini matt fabric with wash & wear properties

ROSA JACKET - LONG SLEEVE



Product Code: **ROJ4MST** - Black, Navy
ROJ4MEL - Charcoal
ROJ4SPV - Charcoal stripe

FABRIC: ROJ4MST & ROJ4MEL: Mini matt - 100% polyester
ROJ4SPV: Polyviscose

ADULT SIZES:

28 - 30 - 32 - 34 - 36 - 38 - 40 - 42 - 44 - 46 - 48 - 50 - 52 - 54

FEATURES:

- High quality fabrics with wash & wear properties
- Classy engraved DUCHESS buttons
- Fully lined
- Jetted pockets



Available in short sleeve
Product code: ROJ2MST, Page: 50

FOR SPECS AND MORE DETAILS
SCAN NOW



FORMAL DRESSES

PRODUCT CODE:

CLD1 - Claire Dress (View page 76 for more information)

JAD1 - Jane Dress (View page 75 for more information)

SAR1 - Sarah Dress (View page 77 for more information)



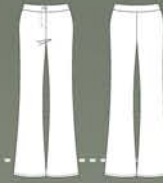
FOR SPECS AND MORE DETAILS
SCAN NOW



PANTS & TROUSERS



LADIES BENGALINE PANTS



Product Code: **LBT1**

FABRIC: Polyester and spandex

ADULT SIZES: 30 - 32 - 34 - 36 - 38 - 40 - 42 - 44

FEATURES:

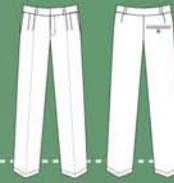
- Flattering fit
- Full waistband, zip and button
- Fabric contains spandex for stretch and is durable with wash & wear properties



FOR SPECS AND MORE DETAILS
SCAN NOW



CLASSIC TROUSERS



Black



Single back pocket



Navy



Product Code: **PVT3**

FABRIC: 100% Polyester

ADULT SIZES: 30 - 32 - 34 - 36 - 38 - 40 - 42 - 44

FEATURES:

- Classic style
- Single back pocket
- Pleated styled front
- Top quality durable zip
- Durable polyester fabric



FOR SPECS AND MORE DETAILS
SCAN NOW



DUCHESS[®]

VANGARD[®]



PHILLIP TROUSERS



Product Code: **PHR4MST** - Black, Navy
PHR4MEL - Charcoal

FABRIC: Mini matt - 100% polyester

ADULT SIZES:
 28 - 30 - 32 - 34 - 36 - 38 - 40 - 42 - 44 - 46 - 48

- FEATURES:
- Turn-ups
 - Back and side pockets
 - Hook and eye fastener
 - High quality mini matt fabric with wash & wear properties



Matching suit jacket range
 Product code:
 PEJ4 - page 52.



FOR SPECS AND MORE DETAILS
 SCAN NOW



PATRICIA PANTS



Product Code: **PAP4MST** - Stone, Black, Navy
PAP4MEL - Charcoal
PAP4SPV - Charcoal stripe

FABRIC:
 PAP4MST & PAP4MEL: Mini matt - 100% polyester
 PAP4SPV: Polyviscose

ADULT SIZES:
 28 - 30 - 32 - 34 - 36 - 38 - 40 - 42 - 44 - 46 - 48 - 50 - 52 - 54

- FEATURES:
- Bootleg flare
 - Full waistband with two buttons and a zip
 - High quality fabric with wash & wear properties



FOR SPECS AND MORE DETAILS
 SCAN NOW



DUCHESS



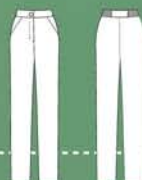
Berlei Pants



Terry Pants



BERLEI PANTS



Product Code: **BEP4MST** - Black, Navy
BEP4MEL- Charcoal

FABRIC: Mini matt - 100% polyester

ADULT SIZES:
28 - 30 - 32 - 34 - 36 - 38 - 40 - 42 - 44 - 46 - 48 - 50 - 52 - 54

- FEATURES:
- High waistband, front zip and button
 - Side slanted pockets
 - Semi-elasticated waist
 - High quality mini matt fabric with wash & wear properties



FOR SPECS AND MORE DETAILS
SCAN NOW



TERRY PANTS



Product Code: **TEP4MST** - Black, Navy

FABRIC: Mini matt - 100% polyester

ADULT SIZES:
28 - 30 - 32 - 34 - 36 - 38 - 40 - 42 - 44 - 46 - 48 - 50 - 52 - 54

- FEATURES:
- Side pockets and full elasticated waist
 - Classic corporate style
 - High quality mini matt fabric with wash & wear properties



FOR SPECS AND MORE DETAILS
SCAN NOW



SALIS PANTS



Charcoal

Stone

Navy

Black



Product Code: **SAP4MST** - Black, Navy, Stone
SAP4MEL - Charcoal

FABRIC: Mini matt - 100% polyester

ADULT SIZES:
28 - 30 - 32 - 34 - 36 - 38 - 40 - 42 - 44 - 46 - 48 - 50 - 52 - 54

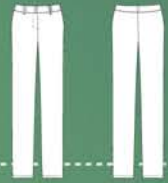
FEATURES:
- Side pockets
- Back elasticated waist
- High quality mini matt fabric with wash & wear properties



FOR SPECS AND MORE DETAILS
SCAN NOW



ELLA PANTS



Product Code: **ELP1**

FABRIC: Polyester rayon and spandex

ADULT SIZES:

28 - 30 - 32 - 34 - 36 - 38 - 40 - 42 - 44 - 46 - 48 - 50 - 52 - 54

FEATURES:

- Full waistband with two buttons and zip
- Belt loops
- Slight stretch for comfort



WASH & WEAR



STRETCH



FOR SPECS AND MORE DETAILS
SCAN NOW



DUCHESS 



CLASSIC DENIM JEANS



Blue denim



Black denim



Product Code: **JFP1**

FABRIC: Cotton

ADULT SIZES: 30 - 32 - 34 - 36 - 38 - 40 - 42 - 44

FEATURES:

- High quality denim
- Double back pockets
- Classic five pocket style
- Top quality durable zip



FOR SPECS AND MORE DETAILS
SCAN NOW



LADIES DENIM JEANS



Blue denim



Black denim



Product Code: **LJF1**

FABRIC: 98% Cotton and 2% spandex

ADULT SIZES: 30 - 32 - 34 - 36 - 38 - 40 - 42 - 44

FEATURES:

- High quality denim
- Subtle bootleg flare
- Classic five pocket style
- Complementary top stitching
- Top quality durable zip



FOR SPECS AND MORE DETAILS
SCAN NOW



CHINOS



Black



Sand



Navy



Khaki



Product Code: **CPF3**

FABRIC: Polycotton

ADULT SIZES: 28 - 30 - 32 - 34 - 36 - 38 - 40 - 42 - 44

FEATURES:

- Classic style
- Pleated styled front
- Double back pockets
- Top quality durable zip
- Superior quality polycotton



FOR SPECS AND MORE DETAILS
SCAN NOW



5 POCKET CHINOS



Product Code: **CPF4**

FABRIC: Polycotton

ADULT SIZES: 28 - 30 - 32 - 34 - 36 - 38 - 40 - 42 - 44

FEATURES:

- Classic 5 pocket style
- Double back pockets
- Top quality durable zip
- Superior quality polycotton



FOR SPECS AND MORE DETAILS
SCAN NOW



CLARK & TERRY SCRUB PANTS



CLARK SCRUB PANTS



TERRY SCRUB PANTS



Product Code: **CLR4KTN** - Clark Scrub Pants
TEP4KTN - Terry Scrub Pants

FABRIC: KOOLTRON polycotton

ADULT SIZES:

Clark Scrub Pants: 28 - 30 - 32 - 34 - 36 - 38 - 40 - 42 - 44

Terry Scrub Pants:

28 - 30 - 32 - 34 - 36 - 38 - 40 - 42 - 44 - 46 - 48 - 50 - 52 - 54

FEATURES:

- Multiple pockets on all garments
- High quality KOOLTRON polycotton fabric
- CLARK and TERRY have an elasticated waist for comfort and is ideal for most body types



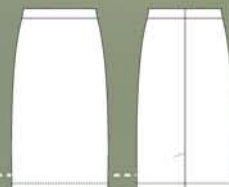
FOR SPECS AND MORE DETAILS
SCAN NOW



SKIRTS & DRESSES



AVA SKIRT



Product Code: AVZ1

FABRIC: 100% waffle polyester

ADULT SIZES:

28 - 30 - 32 - 34 - 36 - 38 - 40 - 42 - 44 - 46 - 48 - 50 - 52 - 54

FEATURES:

- Flattering design
- Slimming waistband
- Stretch fabric perfect for many body types
- Back slit for comfort and ease of movement
- Take one size smaller than usual for a slim, modern fit



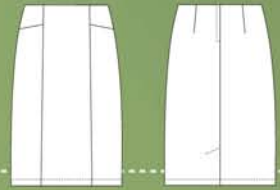
FOR SPECS AND MORE DETAILS
SCAN NOW



DUCHESS



DIANA SKIRT



Black



Navy



Product Code: **DIA1**

FABRIC: Polyester rayon and spandex

ADULT SIZES:

28 - 30 - 32 - 34 - 36 - 38 - 40 - 42 - 44 - 46 - 48 - 50 - 52 - 54

FEATURES:

- Back zip
- Elegant design
- Slight stretch for comfort
- Back vent pleat for ease of movement



FOR SPECS AND MORE DETAILS
SCAN NOW



DUCHESS 

DUCHESS



DIDI SKIRT - 60CM



Product Code: DIZ6MST- Black, navy, stone
DIZ6MEL - Charcoal

FABRIC: Mini matt - 100% polyester

ADULT SIZES:

28 - 30 - 32 - 34 - 36 - 38 - 40 - 42 - 44 - 46 - 48 - 50 - 52 - 54

FEATURES:

- Front darts
- Semi-elasticated waist
- Fully lined and concealed back zip
- Back vent pleat for ease of movement



FOR SPECS AND MORE DETAILS
SCAN NOW



DIDI SKIRT - 80CM



Product Code: DIZ8MST - Black, navy
DIZ8MEL - Charcoal

FABRIC: Mini matt - 100% polyester

ADULT SIZES:

28 - 30 - 32 - 34 - 36 - 38 - 40 - 42 - 44 - 46 - 48 - 50 - 52 - 54

FEATURES:

- Front darts
- Semi-elasticated waist
- Longer length for knee coverage
- Fully lined with a concealed back zip
- Long vent pleat for ease of movement



FOR SPECS AND MORE DETAILS
SCAN NOW



LIZE SKIRT - 60CM



Product Code: LIZ6MST - Black, navy
LIZ6MEL - Charcoal

FABRIC: Mini matt - 100% polyester

ADULT SIZES:

28 - 30 - 32 - 34 - 36 - 38 - 40 - 42 - 44 - 46 - 48 - 50 - 52 - 54

FEATURES:

- Flattering design
- Fully lined with a concealed back zip
- Double front and back pleats give the garment a stylish flare



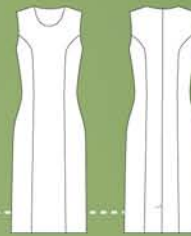
FOR SPECS AND MORE DETAILS
SCAN NOW



74 | SKIRTS & DRESSES


DUCHESS

JANE DRESS



Product Code: JAD1MST - Black, navy
JAD1MEL - Charcoal

FABRIC: Mini matt - 100% polyester

ADULT SIZES:
28 - 30 - 32 - 34 - 36 - 38 - 40 - 42 - 44 - 46 - 48 - 50 - 52 - 54

- FEATURES:
- Back zip
 - Fully lined
 - Elegant design
 - Back vent pleat for ease of movement



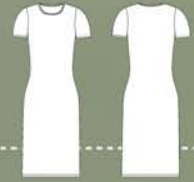
DUCHESS 



FOR SPECS AND MORE DETAILS
SCAN NOW



CLAIRE DRESS



Product Code: CLD1

FABRIC: 100% waffle polyester

ADULT SIZES:

28 - 30 - 32 - 34 - 36 - 38 - 40 - 42 - 44 - 46 - 48 - 50 - 52 - 54

FEATURES:

- Flattering design
- Body contouring shape
- Stretchy fabric perfect for many body types
- Take one size smaller than usual for a slim, modern fit



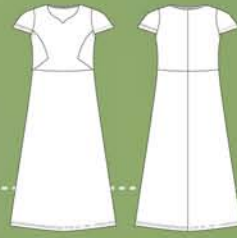
FOR SPECS AND MORE DETAILS
SCAN NOW



76 | SKIRTS & DRESSES

DUCHESS 

SARAH DRESS



Product Code: SAR1

FABRIC: 100% waffle polyester

ADULT SIZES:

28 - 30 - 32 - 34 - 36 - 38 - 40 - 42 - 44 - 46 - 48 - 50 - 52 - 54

FEATURES:

- Flattering design
- Contouring waistline
- Flowing skirt is flattering for all body types



WASH & WEAR



STRETCH



FOR SPECS AND MORE DETAILS
SCAN NOW



DUCHESS 

FRANCES & RINA DRESSES

PRODUCT CODE:

FRD2KTN - Frances Dress (View page 194 for more information)

RID2MST - Rina Dress (View page 203 for more information)



FRANCES DRESS



RINA DRESS

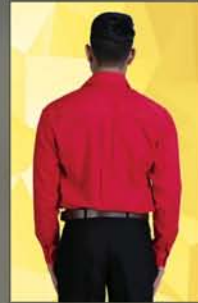


FOR SPECS AND MORE DETAILS
SCAN NOW



SHIRTS & BLOUSES





ICON WOVEN SHIRT

Mens - Product Code: **MWS8** - Short Sleeve | **MWS9** - Long Sleeve



Ladies - Product Code: **LWS8** - 3/4 Sleeve



Black

Lime

Navy

Red

Sky

White

FABRIC: Polycotton

ADULT SIZES: S - M - L - XL - 2XL - 3XL - 4XL - 5XL

FEATURES:

- Reinforced top stitching
- Engraved matching buttons
- Mens style has a left breast pocket
- Ladies design has a tapered waistline and three quarter sleeve with cuff



FOR SPECS AND MORE DETAILS
SCAN NOW





PRIME WOVEN SHIRT

Mens - Product Code: **WSC202** - Short Sleeve | **WSC203** - Long Sleeve



Ladies - Product Code: **LWC201** - 3/4 Sleeve **RELAXED FIT**



Black

Denim

White

Stone

FABRIC: Cotton rich

ADULT SIZES: S - M - L - XL - 2XL - 3XL - 4XL - 5XL

FEATURES:

- Reinforced top stitching
- Superior quality fabric for comfort and coolness
- Ladies style has double pockets and a three quarter sleeve
- Mens style has a single pocket and two piece button down designer collar



FOR SPECS AND MORE DETAILS
SCAN NOW





CLASSIC WOVEN SHIRT

Mens - Product Code: **MWS1** - Short Sleeve | **MWS2** - Long Sleeve



Ladies - Product Code: **LWS1** - Short Sleeve | **LWS2** - Long Sleeve **CLASSIC FIT**



FABRIC: Polycotton with softwash treatment

ADULT SIZES: S - M - L - XL - 2XL - 3XL - 4XL - 5XL

FEATURES:

- Reinforced top stitching
- Pearlised engraved matching buttons
- Easy-wear fabric is treated to create a soft feel
- Ladies style has a tapered waistline
- Mens style has a left breast pocket



FOR SPECS AND MORE DETAILS
SCAN NOW



VANGARD[®]

DUCHESS[®]



CAMERON SHIRT



Product Code:

CAS2OPC - Short Sleeve

CAS4OPC - Long Sleeve

FABRIC: Superior quality polycotton

ADULT SIZES: S - M - L - XL - 2XL - 3XL - 4XL - 5XL

FEATURES:

- Left breast pocket
- Button down collar
- Classy engraved VANGARD buttons
- Superior quality comfortable polycotton fabric



ROSELINA BLOUSE



Product Code:

ROB2OPC - Short Sleeve

ROB3OPC - 3/4 Sleeve

ROB4OPC - Long Sleeve

FABRIC: Superior quality polycotton

ADULT SIZES:

28 - 30 - 32 - 34 - 36 - 38 - 40 - 42 - 44 - 46 - 48 - 50 - 52 - 54

FEATURES:

- Front and back darts
- Classy engraved DUCHESS buttons
- Superior quality comfortable polycotton fabric



FOR SPECS AND MORE DETAILS
SCAN NOW



VANGARD[®]

DUCHESS[®]



MATTHEW SHIRT - CHECK DESIGN 1



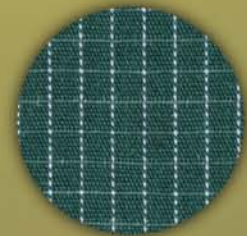
Product Code: **MAS2C1** - Short Sleeve
MAS4C1- Long Sleeve

FABRIC: Cotton rich yarn dye

ADULT SIZES: S - M - L - XL - 2XL - 3XL - 4XL - 5XL

FEATURES:

- Left breast pocket
- Classic graph check design
- Classy engraved VANGARD buttons
- Comfortable cotton rich yarn dye fabric that is superior quality



Check design 1

ROSELINA BLOUSE- CHECK DESIGN 1



Product Code: **ROB2C1** - Short Sleeve
ROB4C1- Long Sleeve

FABRIC: Cotton rich yarn dye

ADULT SIZES:

28 - 30 - 32 - 34 - 36 - 38 - 40 - 42 - 44 - 46 - 48 - 50 - 52 - 54

FEATURES:

- Front and back darts
- Classic graph check design
- Classy engraved DUCHESS buttons
- Comfortable cotton rich yarn dye fabric that is superior quality



FOR SPECS AND MORE DETAILS
SCAN NOW



DUCHESS[®]

VANGARD[®]



CAMERON SHIRT - CHECK DESIGN 3



Product Code: **CAS2C3**- Short Sleeve
CAS4C3 - Long Sleeve

FABRIC: Cotton rich yarn dye

ADULT SIZES: S - M - L - XL - 2XL - 3XL - 4XL - 5XL

FEATURES:

- Left breast pocket
- Button down collar
- Smart tattersall check design
- Classy engraved VANGARD buttons
- Comfortable cotton rich yarn dye fabric that is superior quality



Check design 3

DONNA BLOUSE - CHECK DESIGN 3



Sky

Charcoal

Product Code: **DOB3C3**

FABRIC: Cotton rich yarn dye

ADULT SIZES:

28 - 30 - 32 - 34 - 36 - 38 - 40 - 42 - 44 - 46 - 48 - 50 - 52 - 54

FEATURES:

- Front and back darts
- Tattersall check design
- Classy engraved DUCHESS buttons
- Comfortable cotton rich yarn dye fabric that is superior quality

FOR SPECS AND MORE DETAILS
SCAN NOW



VANGARD[®]

DUCHESS[®]



CAMERON SHIRT - STRIPE DESIGN 5



Product Code: **CAS2S5** - Short Sleeve
CAS4S5 - Long Sleeve

FABRIC: Cotton rich yarn dye

ADULT SIZES: S - M - L - XL - 2XL - 3XL - 4XL - 5XL

FEATURES:

- Left breast pocket
- Button down collar
- Crisp, classic stripe design
- Classy engraved VANGARD buttons
- Comfortable cotton rich yarn dye fabric that is superior quality



Stripe design 5

DONNA BLOUSE - STRIPE DESIGN 5



Product Code: **DOB2S5** - Short Sleeve
DOB4S5 - Long Sleeve

FABRIC: Cotton rich yarn dye

ADULT SIZES:

28 - 30 - 32 - 34 - 36 - 38 - 40 - 42 - 44 - 46 - 48 - 50 - 52 - 54

FEATURES:

- Front and back darts
- Crisp, classic stripe design
- Classy engraved DUCHESS buttons
- Comfortable cotton rich yarn dye fabric that is superior quality



FOR SPECS AND MORE DETAILS
SCAN NOW



DUCHESS[®]

VANGARD[®]



MATTHEW SHIRT - STRIPE DESIGN 4



Product Code: **MAS2S4** - Short Sleeve
MAS4S4- Long Sleeve

FABRIC: Cotton rich yarn dye

ADULT SIZES: S - M - L - XL - 2XL - 3XL - 4XL - 5XL

FEATURES:

- Left breast pocket
- Sophisticated, unique stripe design
- Classy engraved VANGARD buttons
- Comfortable cotton rich yarn dye fabric that is superior quality



Stripe design 4

ROSELINA BLOUSE- STRIPE DESIGN 4



Product Code: **ROB3S4** - 3/4 Sleeve

FABRIC: Cotton rich yarn dye

ADULT SIZES:

28 - 30 - 32 - 34 - 36 - 38 - 40 - 42 - 44 - 46 - 48 - 50 - 52 - 54

FEATURES:

- Front and back darts
- Classy engraved DUCHESS buttons
- Sophisticated, unique stripe design
- Comfortable cotton rich yarn dye fabric that is superior quality

FOR SPECS AND MORE DETAILS
SCAN NOW



DUCHESS[®]

VANGARD[®]



CAMERON SHIRT - STRIPE DESIGN 8



Product Code: **CAS2S8** - Short Sleeve
CAS4S8 - Long Sleeve

FABRIC: Cotton rich yarn dye

ADULT SIZES: S - M - L - XL - 2XL - 3XL - 4XL - 5XL

FEATURES:

- Left breast pocket
- Button down collar
- Intriguing stripe design
- Classy engraved VANGARD buttons
- Comfortable cotton rich yarn dye fabric that is superior quality



Stripe design 8

DONNA BLOUSE - STRIPE DESIGN 8



White/sky/royal/black

Product Code: **DOB3S8**

FABRIC: Cotton rich yarn dye

ADULT SIZES:

28 - 30 - 32 - 34 - 36 - 38 - 40 - 42 - 44 - 46 - 48 - 50 - 52 - 54

FEATURES:

- Front and back darts
- Intriguing tri-stripe design
- Classy engraved DUCHESS buttons
- Comfortable cotton rich yarn dye fabric that is superior quality

FOR SPECS AND MORE DETAILS
SCAN NOW



VANGARD[®]

DUCHESS[®]



CAMERON SHIRT - STRIPE DESIGN 6



Product Code: **CAS2S6**- Short Sleeve
CAS4S6 - Long Sleeve

FABRIC: Cotton rich yarn dye

ADULT SIZES: S - M - L - XL - 2XL - 3XL - 4XL - 5XL

FEATURES:

- Left breast pocket
- Button down collar
- Classy engraved VANGARD buttons
- Unique stripe design in cool, charming colours
- Comfortable cotton rich yarn dye fabric that is superior quality



Stripe design 6

DONNA BLOUSE - STRIPE DESIGN 6



Product Code: **DOB3S6**

FABRIC: Cotton rich yarn dye

ADULT SIZES:

28 - 30 - 32 - 34 - 36 - 38 - 40 - 42 - 44 - 46 - 48 - 50 - 52 - 54

FEATURES:

- Front and back darts
- Classy engraved DUCHESS buttons
- Unique stripe design in cool, charming colours
- Comfortable cotton rich yarn dye fabric that is superior quality

FOR SPECS AND MORE DETAILS
SCAN NOW





VERTISTRIBE WOVEN SHIRT

Mens - Product Code: **MWS5** - Short Sleeve | **MWS6** - Long Sleeve



Ladies - Product Code: **LWS5** - Short Sleeve | **LWS6** - Long Sleeve **CLASSIC FIT**



Sky



FABRIC: Polycotton vertical stripe

ADULT SIZES: S - M - L - XL - 2XL - 3XL

FEATURES:

- Reinforced top stitching
- Engraved matching buttons
- Mens has a left breast pocket
- Lightweight fabric for coolness
- Ladies design has a tapered waistline



Sky/white



FOR SPECS AND MORE DETAILS
SCAN NOW





TRACTION PIT CREW SHIRT

Mens - Product Code: **MWP1**



Ladies - Product Code: **LWP1**



Black/red

Black/lime

Black/royal

Navy/white

FABRIC: Polycotton with softwash treatment

ADULT SIZES: S - M - L - XL - 2XL - 3XL - 4XL - 5XL

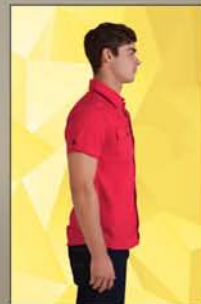
FEATURES:

- Reinforced top stitching
- Styled chest piping detail
- Engraved matching buttons
- Mens style has a single pocket
- Easy-wear fabric is treated to create a soft feel



FOR SPECS AND MORE DETAILS
SCAN NOW





DYNAMIC WOVEN SHIRT

Mens - Product Code: **MWS7**

CLASSIC FIT



Black

Navy

Red

White

Ladies - Product Code: **LWS7**

CLASSIC FIT



FABRIC: Polycotton

ADULT SIZES: Mens: S - M - L - XL - 2XL - 3XL
Ladies: XS - S - M - L - XL - 2XL - 3XL

FEATURES:

- Double pockets
- Stylish contrast stitching
- Contrast engraved buttons



Mens design has a pen slot on left breast pocket



Both designs have trendy epaulettes on sleeves

FOR SPECS AND MORE DETAILS
SCAN NOW





VENTURE BUSH SHIRT

Mens - Product Code: **MBS2**



Ladies - Product Code: **LBS2** **RELAXED FIT**



Khaki

Dark olive

Slate blue

Stone

FABRIC: 100% Cotton

ADULT SIZES: S - M - L - XL - 2XL - 3XL - 4XL - 5XL

FEATURES:

- 100% Durable cotton - all terrain fabric
- Double pleated pockets with buttons
- Reinforced double stitching

FOR SPECS AND MORE DETAILS
SCAN NOW





HEAVY DUTY BUSH SHIRT

Mens - Product Code: **WSC201**



Ladies - Product Code: **LBS1** **RELAXED FIT**



Khaki



Stone



Dark olive

FABRIC: 100% Cotton

ADULT SIZES: S - M - L - XL - 2XL - 3XL - 4XL - 5XL

FEATURES:

- 100% Durable cotton - all terrain fabric
- Double pleated pockets with buttons
- Reinforced double stitching

FOR SPECS AND MORE DETAILS
SCAN NOW



SAVANNAH BUSH SHIRT



Product Code: **MBS3**

FABRIC: 100% Cotton

ADULT SIZES:
S - M - L - XL - 2XL - 3XL - 4XL - 5XL

- FEATURES:
- Two-tone design
 - Reinforced double stitching
 - 100% Durable cotton - all terrain fabric
 - Double pleated pockets with velcro fastening



FOR SPECS AND MORE DETAILS
SCAN NOW



HEAVY DUTY TWO-TONED BUSH SHIRT



Khaki/stone



Stone/olive



Product Code: **WSC206**

FABRIC: 100% Cotton

ADULT SIZES:
S - M - L - XL - 2XL - 3XL - 4XL - 5XL

FEATURES:
- Reinforced double stitching
- 100% Durable cotton - all terrain fabric
- Double pleated pockets with velcro fastening



FOR SPECS AND MORE DETAILS
SCAN NOW



PENNY BLOUSE - STARBURST DESIGN



Sky

Pink

Navy

Product Code: **PNB2SKO** - Short Sleeve
PNB4SKO - Long Sleeve

FABRIC: Koshiho polyester

ADULT SIZES:

28 - 30 - 32 - 34 - 36 - 38 - 40 - 42 - 44 - 46 - 48 - 50 - 52 - 54

FEATURES:

- Left breast pocket
- Classy engraved DUCHESS buttons
- RELAXED FIT is ideal for most body types
- High quality koshiho polyester fabric has wash & wear properties



FOR SPECS AND MORE DETAILS
SCAN NOW



JESSICA BLOUSE



Navy/white



Product Code: **JEB2DPK**

FABRIC: Crinkle polyester

ADULT SIZES:

28 - 30 - 32 - 34 - 36 - 38 - 40 - 42 - 44 - 46 - 48 - 50 - 52 - 54

FEATURES:

- Elegant dotted pattern
- Side slits for ease of movement
- Classy engraved DUCHESS buttons
- High quality crinkle polyester fabric with wash & wear properties



DUCHESS 



FOR SPECS AND MORE DETAILS
SCAN NOW



THREE-TONE SMALL CHECK WOVEN SHIRT



Product Code: **WSC204** - Short Sleeve
WSC205 - Long Sleeve

FABRIC: Cotton rich small check

ADULT SIZES: S - M - L - XL - 2XL - 3XL

FEATURES:

- Single pocket
- Reinforced top stitching
- Two piece button down designer collar
- Superior quality cotton rich fabric for comfort and coolness



FOR SPECS AND MORE DETAILS
SCAN NOW



T-SHIRTS & TOPS



145g PROMO T-SHIRT



Product Code: **CTB1** - White
CTB2 - Colours

CLASSIC FIT

FABRIC: 100% Cotton

ADULT SIZES: S - M - L - XL - 2XL - 3XL

FEATURES:

- Short sleeve with superior 1x1 neck rib
- Double stitched hem and sleeves



FOR SPECS AND MORE DETAILS
SCAN NOW



145g CLASSIC COTTON T-SHIRT



Product Code: **CTH101** - White
CTH201 - Colours

CLASSIC FIT

FABRIC: 100% Cotton - single knit

ADULT SIZES: S - M - L - XL - 2XL - 3XL - 4XL - 5XL

FEATURES:

- Double stitched hem and sleeves
- Taped shoulders and neckline
- Short sleeve with 1x1 neck rib

100% COTTON

HB



FOR SPECS AND MORE DETAILS
SCAN NOW





150g FASHION FIT T-SHIRT

Mens - Product Code: **CTL1**



Ladies - Product Code: **LTL1**



Black Charcoal Cyan Red White Electric Blue Navy Mélange Graphite Mélange

FABRIC: 100% Super cotton - single knit (Black, charcoal, cyan, red, white, electric blue)
Polycotton (Navy mélange, graphite mélange)

ADULT SIZES - MENS - XS - S - M - L - XL - 2XL - 3XL
ADULT SIZES - LADIES - S - M - L - XL - 2XL - 3XL

FEATURES:

- Produced from top quality yarns
- Brandable label area with neck yolk
- Slim fashionable fit
- Contrast neck tape
- Removable label



Available in long sleeve
Product code: LTB4/CTL4
Page: 126/127

POSITION FOR LABEL BRANDING:



Print your own tagless label below the neckline to complement the fashionable contrast neck tape and scooped neck design.

FOR SPECS AND MORE DETAILS
SCAN NOW



100% Cotton[®]
ULTIMATE
T



170g COMBED COTTON T-SHIRT

Product Code: **CTA105** - White | **CTA205** - Colours **RELAXED FIT**



White

Black

Combat

Navy

Red

Product Code: **CTA103** - White | **CTA204** - Colours **RELAXED FIT**



Black

Grey mélange

White

Navy

Dark olive

Combat

Khaki

Royal

Bottle

Yellow

Red

FABRIC: 100% Combed cotton - single knit

ADULT SIZES - SHORT SLEEVE (CTA103/204): S - M - L - XL - 2XL - 3XL (White, black and navy available in 4XL & 5XL)

ADULT SIZES - LONG SLEEVE (CTA105/205): S - M - L - XL - 2XL - 3XL - 4XL - 5XL

FEATURES:

- Superior 1x1 neck rib
- Double stitched hem and sleeves
- 100% Combed cotton produced from the finest yarns



FOR SPECS AND MORE DETAILS
SCAN NOW



150g SUPER COTTON T-SHIRT



Product Code:

Adults: CTA102 - White
CTA202 - Colours

RELAXED FIT

Youth: KCT102 - White
KCT202 - Colours

FABRIC: 100% Super cotton - single knit

ADULT SIZES: S - M - L - XL - 2XL - 3XL

YOUTH SIZES:

4-5y, 5-6y, 6-7y, 7-8y, 8-9y, 9-10y, 10-11y, 11-12y, 12-13y

FEATURES:

- Double stitched hem and sleeves
- Taped shoulders and neckline
- Short sleeve with 1x1 neck rib



YOUTH SIZING AVAILABLE:



Royal, Cyan, Lime, Yellow, Red
Beige, Bottle, Navy, White, Black

FOR SPECS AND MORE DETAILS
SCAN NOW



190g SUPER COTTON T-SHIRT



Product Code: **CTA106** - White
CTA206 - Colours

RELAXED FIT

FABRIC: 100% Super cotton - single knit

ADULT SIZES: S - M - L - XL - 2XL - 3XL

FEATURES:

- Double stitched hem and sleeves
- Short sleeve with superior 1x1 neck rib
- 100% Super cotton produced from top quality yarns

100% Cotton
ULTIMATE
T




FOR SPECS AND MORE DETAILS
SCAN NOW



LADIES V-NECK T-SHIRT



Product Code: **LTB3** 

FABRIC: Polycotton interlock - 195g

ADULT SIZES: S - M - L - XL - 2XL - 3XL

FEATURES:

- High quality stretch fabric
- Double stitched hemlines
- Deeper V for comfort
- Curved waistline

ULTIMATE[®]
T



FOR SPECS AND MORE DETAILS
SCAN NOW



170g CLASSIC V-NECK T-SHIRT



Product Code: **CTV1** - White
CTV2 - Colours

CLASSIC FIT

FABRIC: 100% Combed cotton - single knit

ADULT SIZES: S - M - L - XL - 2XL - 3XL - 4XL - 5XL

FEATURES:

- Short sleeve
- Extra strength neck rib that maintains shape
- Double stitched hem and sleeves



100% Cotton®
ULTIMATE
T



FOR SPECS AND MORE DETAILS
SCAN NOW





150g FASHION FIT T-SHIRT - LONG SLEEVE

Mens - Product Code: **CTL4**



Ladies - Product Code: **LTB4**



FABRIC: 100% Super cotton - single knit (Navy, White, Black)
Polycotton (Graphite mélange)

ADULT SIZES - MENS - S - M - L - XL - 2XL - 3XL
ADULT SIZES - LADIES - S - M - L - XL - 2XL - 3XL

FEATURES:

- Produced from top quality yarns
- Brandable label area with neck yolk
- Slim fashionable fit
- Contrast neck tape
- Removable label



POSITION FOR LABEL BRANDING:




Print your own tagless label below the neckline to complement the fashionable contrast neck tape and scooped neck design.

FOR SPECS AND MORE DETAILS
SCAN NOW



LADIES TANK TOP



Product Code: **LVC201** 

FABRIC: Polycotton interlock - 200g

ADULT SIZES: S - M - L - XL - 2XL - 3XL

FEATURES:

- Polycotton interlock fabric is produced from the best quality yarns for coolness and strength
- Bound armholes and neckline
- Double stitched hem
- Curved waistline

ULTIMATE
T




FOR SPECS AND MORE DETAILS
SCAN NOW



LADIES RACERBACK TOP



Product Code: **LRB1** 

FABRIC: Polycotton interlock - 195g

ADULT SIZES: S - M - L - XL - 2XL - 3XL

FEATURES:

- Polycotton interlock fabric is produced from the best quality yarns for coolness and strength
- Bound armholes and neckline
- Double stitched hem
- Curved waistline

ULTIMATE[®]
T



FOR SPECS AND MORE DETAILS
SCAN NOW



100% Cotton[®]
ULTIMATE
T



EDGE T-SHIRT



Product Code: **CTF3** CLASSIC FIT

FABRIC: 100% Cotton single knit - 150g

ADULT SIZES: S - M - L - XL - 2XL - 3XL

FEATURES:

- Sleeve and neck peep-outs create an edgy modern look
- 100% Cotton produced from top quality yarns
- Double stitched hem and sleeves



FOR SPECS AND MORE DETAILS
SCAN NOW



RAGLAN TRIM T-SHIRT



Product Code: **CTF4** CLASSIC FIT

FABRIC: 100% Cotton single knit - 150g

ADULT SIZES: S - M - L - XL - 2XL - 3XL

FEATURES:

- Contrast raglan trim
- Superior 1x1 neck rib
- Double stitched hem and sleeves
- 100% Combed cotton produced from the finest yarns



FOR SPECS AND MORE DETAILS
SCAN NOW



CLASSIC SPORTS T-SHIRT



Product Code: **MMT4** - Adults
KMT4 - Youth

SPORTS FIT

FABRIC: Polyester honeycomb eyelet

ADULT SIZES: S - M - L - XL - 2XL - 3XL

YOUTH SIZES:

4-5y, 5-6y, 6-7y, 7-8y, 8-9y, 9-10y, 10-11y, 11-12y, 12-13y

FEATURES:

- Short sleeve
- Crease resistant
- Ideal for sporting or team building activities
- High quality moisture management fabric which creates a cool, dry zone next to the skin



MOISTURE WICKING



WASH & WEAR

YOUTH SIZING AVAILABLE:



Black, White, Navy

FOR SPECS AND MORE DETAILS
SCAN NOW



Moisture Management
ULTIMATE
T

POLO & GOLF SHIRTS





CLASSIC PIQUE KNIT POLO

Mens - Product Code: **PKD201** CLASSIC FIT



Ladies - Product Code: **LPK2** TAILORED FIT



Youth - Product Code: **KPK2**



FABRIC: Combed polycotton pique knit - 175g

ADULT SIZES (PKD201 & LPK2): S - M - L - XL - 2XL - 3XL - 4XL - 5XL

YOUTH SIZES (KPK2): 4/5yr - 5/6yr - 6/7yr - 7/8yr - 8/9yr - 9/10yr - 10/11yr - 11/12 yr - 12/13yr

FEATURES:

- Knitted collar using high quality yarns to maintain shape
- Produced from the best quality yarns for durability
- Double stitched hem and sleeves
- Mens style - pockets on request
- Ladies style - side slits for comfort



FOR SPECS AND MORE DETAILS
SCAN NOW



LONG SLEEVE PIQUE KNIT POLO



Product Code: **PKD3** CLASSIC FIT

FABRIC: Combed polycotton pique knit - 175g

ADULT SIZES: S - M - L - XL - 2XL - 3XL

FEATURES:

- Produced from the best quality yarns for durability
- Double stitched hem and sleeves
- 3 Button plaquet
- Knitted collar
- Pockets on request



**TEE &
COTTON**[®]

FOR SPECS AND MORE DETAILS
SCAN NOW



RAGLAN TRIM POLO



Red/slate grey




Navy/sky



Slate grey/lime



Product Code: **MFP6** 

FABRIC: Combed polycotton pique knit - 175g

ADULT SIZES: S - M - L - XL - 2XL - 3XL - 4XL - 5XL

FEATURES:

- Pearlescent engraved buttons
- Contrast trim on plaquet and raglan sleeves
- Produced from the best quality yarns for durability
- Pockets on request





FOR SPECS AND MORE DETAILS
SCAN NOW





GC CLASSIC HEAVY WEIGHT POLO

Mens - Product Code: **GMFP8**



Ladies - Product Code: **GLFP8**



White



Navy



Black

FABRIC: Polycotton pique knit - 240g

ADULT SIZES: S - M - L - XL - 2XL - 3XL - 4XL - 5XL

FEATURES:

- Knitted collar
- Double stitched hem and sleeves
- Produced from the best quality yarns for durability

FOR SPECS AND MORE DETAILS
SCAN NOW





GC STRATUS POLO

Mens - Product Code: **GMFP9**



Ladies - Product Code: **GLFP9**



Black/lime



Black/red



Black/royal

FABRIC: Combed polycotton pique knit - 175g

ADULT SIZES: S - M - L - XL - 2XL - 3XL - 4XL - 5XL

FEATURES:

- Knitted collar
- Contrast plaquet, side panels and piping detail
- Produced from the best quality yarns for durability
- Ladies style has side slits for ease of movement

FOR SPECS AND MORE DETAILS
SCAN NOW





GC INFINITY POLO

Mens - Product Code: **GMFP10**



Ladies - Product Code: **GLFP10**



Navy/white



Lime/slate grey



Orange/black

FABRIC: Combed polycotton pique knit - 175g

ADULT SIZES: S - M - L - XL - 2XL - 3XL - 4XL - 5XL

FEATURES:

- Knitted collar
- Contrast plaquet and sleeves
- Produced from the best quality yarns for durability

FOR SPECS AND MORE DETAILS
SCAN NOW





RAISED RIDGE POLO

Mens - Product Code: **MFP3** CLASSIC FIT



Ladies - Product Code: **LSB3** TAILORED FIT



Navy/lime/white

Sky/navy/white

Stone/combat/white

Lime/navy/white

FABRIC: Polycotton pique knit - 240g

ADULT SIZES: S - M - L - XL - 2XL - 3XL - 4XL - 5XL

FEATURES:

- Contrast trim and plaquet
- Side slits for comfort and ease of movement
- Produced from top quality yarns for durability
- Pearlised engraved buttons
- Mens style - pockets on request



Unique raised ridge stripe

FOR SPECS AND MORE DETAILS
SCAN NOW





CONTRAST TRIM POLO

Mens - Product Code: **MFP201** RELAXED FIT



Stone/black

Black/grey

Royal/navy

Red/black

Navy/grey

White/navy

Orange/black

Ladies - Product Code: **LFP201** SLIM FIT



Pink/grey

Stone/black

Black/grey

Royal/navy

Red/black

Navy/grey

White/navy

FABRIC: Polycotton pique knit - 240g

ADULT SIZES: S - M - L - XL - 2XL - 3XL - 4XL - 5XL

FEATURES:

- Double stitched hem and sleeves
- Knitted collar using high quality yarns
- Side slits for comfort and ease of movement
- Fashionable contrasting on plaquet, collar, cuffs and side slits
- Mens style - pockets on request

FOR SPECS AND MORE DETAILS
SCAN NOW





TRENDY POLO

Mens - Product Code: **MFP4** CLASSIC FIT



Ladies - Product Code: **LSB4** TAILORED FIT



White/lime

White/orange

White/turquoise

FABRIC: Combed cotton - 170g

ADULT SIZES: S - M - L - XL - 2XL - 3XL

FEATURES:

- 100% Combed cotton produced from the best quality yarns for coolness and strength
- Bright contrast trim on knitted collar, cuffs and button placket
- Side slits for comfort and ease of movement
- Mens style - pockets on request



FOR SPECS AND MORE DETAILS
SCAN NOW





FLAT PIPING POLO

Mens - Product Code: **MFP5** CLASSIC FIT



Ladies - Product Code: **LSB5** TAILORED FIT



Navy/white



Stone/black



White/navy

FABRIC: 100% Combed cotton - 170g

ADULT SIZES: S - M - L - XL - 2XL - 3XL - 4XL - 5XL

FEATURES:

- 100% Combed cotton produced from the best quality yarns for coolness and strength
- Contrast stitching and flat piping detail
- Side slits for comfort
- Mens style - Pockets on request
- Ladies style has an elongated open plaquet for comfort



Flat piping detail



FOR SPECS AND MORE DETAILS
SCAN NOW



JACQUARD COLLAR GOLFER



Product Code: **CGU201** 

FABRIC: 100% Combed cotton - 170g

ADULT SIZES: S - M - L - XL - 2XL - 3XL

FEATURES:

- 100% Combed cotton produced from the best quality yarns for coolness and strength
- Double stitched hem and sleeves
- Pockets on request




FOR SPECS AND MORE DETAILS
SCAN NOW



STATEMENT POLO



Product Code: **MFP7** 

FABRIC: 100% Combed cotton - 170g

ADULT SIZES: S - M - L - XL - 2XL - 3XL

FEATURES:

- 100% Combed cotton produced from the best quality yarns for coolness and strength
- Side slits for comfort and ease of movement
- Contrast collar and piping detail
- Pockets on request





FOR SPECS AND MORE DETAILS
SCAN NOW





PENCIL STRIPE GOLFER

Mens - Product Code: **CGU3** CLASSIC FIT



Black/white

Navy/white

Newport blue/white

Royal/white

Stone/white

White/navy

Ladies - Product Code: **LCG3** TAILORED FIT



FABRIC: 100% Combed cotton - 170g

ADULT SIZES: S - M - L - XL - 2XL - 3XL - 4XL - 5XL

FEATURES:

- 100% Combed cotton produced from the best quality yarns for coolness and strength
- Contrast trim on collar and cuffs
- Side slits for comfort
- Mens style has engraved buttons and pockets on request
- Ladies style has a cross over neckline with flat piping detail



FOR SPECS AND MORE DETAILS
SCAN NOW





EPIC GOLFER

Mens - Product Code: **CGU4** CLASSIC FIT



Ladies - Product Code: **LCG4** TAILORED FIT



Black/white



Turquoise/white



Maroon/white

FABRIC: 100% Combed cotton - 170g

ADULT SIZES: S - M - L - XL - 2XL - 3XL - 4XL - 5XL

FEATURES:

- 100% Combed cotton produced from the best quality yarns for coolness and strength
- Side slits for comfort and ease of movement
- Dual stripe on edge of collar
- Engraved contrast buttons
- Mens style - Pockets on request



FOR SPECS AND MORE DETAILS
SCAN NOW





OGIO calibre2.0 polo



Accelerate beyond the limits in this high-performance polo that pays tribute to your favorite jeans with its rounded, bartacked placket.

PRODUCT CODE: **OG101**

SPECS

- OGIO heat transfer label for tag free comfort
- Rib knit collar and cuffs
- OGIO jacquard neck tape
- Triple-needle shoulders and hem
- 3-Button placket with dyed-to-match OGIO buttons
- OGIO badge on left sleeve
- Side vents

MATERIALS

- 5-ounce, 100% Poly with stay-cool wicking technology

ADULT SIZES: S - M - L - XL - 2XL - 3XL



OGIO jewel polo



Impeccably designed for wonder women everywhere, the Jewel has a contoured fit and streamlined style.

PRODUCT CODE: **LOG101**

SPECS

- OGIO heat transfer label for tag free comfort
- Self-fabric collar
- OGIO jacquard neck tape
- 6-Button placket with OGIO dyed-to-match buttons
- Rib knit cuffs
- OGIO badge on left sleeve

MATERIALS

- 5-ounce, 100% Poly with stay-cool wicking technology

LADIES SIZES: S - M - L - XL - 2XL - 3XL



FOR SPECS AND MORE DETAILS
SCAN NOW





OGIO opticpolo



No optical illusion here. This visionary OGIO design features an edgy OGIO pattern print on the sleeves.

PRODUCT CODE: **OG110**

SPECS

- OGIO heat transfer label for tag free comfort
- Self-fabric collar
- OGIO jacquard neck tape
- 3-Snap placket with debossed OGIO metal snaps
- Woven OGIO badge on left sleeve

MATERIALS

- 5-ounce, 100% Poly with stay-cool wicking technology

ADULT SIZES: S - M - L - XL - 2XL - 3XL



OGIO gaze polo



This feminine polo will receive appreciative gazes thanks to its edgy look.

PRODUCT CODE: **LOG114**

SPECS

- OGIO heat transfer label for tag free comfort
- 3-Snap placket with OGIO debossed ring snaps
- Set-in sleeves with reverse self-fabric cuffs and OGIO debossed rivets

MATERIALS

- 3.8-ounce, 100% Poly double knit with stay-cool wicking technology

LADIES SIZES: S - M - L - XL - 2XL - 3XL



FOR SPECS AND MORE DETAILS
SCAN NOW





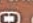

OGIO o-boy polo

Shock green



Blacktop



Boy-oh boy this polo kicks convention to the curb with a debossed  on the right shoulder and  debossed metal snaps.

PRODUCT CODE: **OG107**

SPECS

- OGIO heat transfer label for tag free comfort
- Self-fabric collar
- OGIO jacquard neck tape
- 3-Snap placket with  debossed metal snaps
- Open hem sleeves
- OGIO badge on left sleeve
- Side vents with  debossed metal rivets

MATERIALS

- 4.6-ounce, 100% Double knit poly mesh with stay-cool wicking technology

ADULT SIZES: S - M - L - XL - 2XL - 3XL



OGIO glam polo

Pink crush

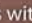


Blacktop



Shock green



Designed to handle the curves, the Glam has a contoured fit and unique open hem cuffs with  debossed metal snaps.

PRODUCT CODE: **LOG105**

SPECS

- OGIO heat transfer label for tag free comfort
- Self-fabric collar
- OGIO jacquard neck tape
- 3-Snap Y-placket with  debossed metal snaps
- OGIO badge at hem

MATERIALS

- 4.6-ounce, 100% Double knit poly mesh with stay-cool wicking technology

LADIES SIZES: S - M - L - XL - 2XL - 3XL



FOR SPECS AND MORE DETAILS
SCAN NOW



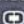
OGIO traxpolo

Voltage blue/blacktop/silver grey



Blacktop/diesel grey/signal red



Veer off the beaten track in this polo with contrast bar tacks on the placket and sleeves, contrast shoulder and side panels and  debossed metal rivets.

PRODUCT CODE: **OG106**

SPECS

- Flatlock stitching throughout
- OGIO heat transfer label for tag free comfort
- Self-fabric collar
- OGIO jacquard neck tape
- 3-Button hidden placket with dyed-to-match OGIO buttons
- Open hem sleeves
- OGIO badge on left sleeve

MATERIALS

- 4.6-ounce, 100% Poly double knit mesh with stay-cool wicking technology

ADULT SIZES: S - M - L - XL - 2XL - 3XL



FOR SPECS AND MORE DETAILS
SCAN NOW



SIDE PANELLED SPORTS POLO



Product Code: **MMX201** **SPORTS FIT**

FABRIC: Polymicro waffle

ADULT SIZES: S - M - L - XL - 2XL - 3XL

FEATURES:

- High quality specialised polymicro fabric for maximum breathability and coolness
- Dries quickly through evaporation
- Crease resistant
- Pockets on request

**TEE &
COTTON®**



FOR SPECS AND MORE DETAILS
SCAN NOW





CLASSIC SPORTS POLO

Mens - Product Code: **MSP1** **SPORTS FIT**



Ladies - Product Code: **LSP1** **TAILORED FIT**



Black

Lime

Navy

Red

White

FABRIC: Polyester pique knit

ADULT SIZES: S - M - L - XL - 2XL - 3XL

FEATURES:

- High quality moisture management fabric for maximum breathability and coolness
- Side slits for comfort and ease of movement
- Dries quickly through evaporation
- Crease resistant



MOISTURE WICKING



WASH & WEAR

FOR SPECS AND MORE DETAILS
SCAN NOW





GC VECTOR POLO

Mens - Product Code: **GMMX9**



Ladies - Product Code: **GLMX9**



Cyan/graphite



Electric blue/white



Graphite/yellow

FABRIC: Polyester pique knit

ADULT SIZES: S - M - L - XL - 2XL - 3XL - 4XL - 5XL

FEATURES:

- High quality moisture management fabric for maximum breathability and coolness
- Contrasting inserts on shoulders and sides
- Creates a cool, dry zone next to the skin
- Dries quickly through evaporation
- Crease resistant



FOR SPECS AND MORE DETAILS
SCAN NOW





GC LEGEND POLO

Mens - Product Code: **GMMX6**



Ladies - Product Code: **GLMX6**



Graphite/yellow

Black/orange

Navy/lime

FABRIC: Polyester pique knit

ADULT SIZES: S - M - L - XL - 2XL - 3XL - 4XL - 5XL

FEATURES:

- High quality moisture management fabric for maximum breathability and coolness
- Contrasting trim on collar, neck binding and sleeves
- Creates a cool, dry zone next to the skin
- Dries quickly through evaporation
- Crease resistant



FOR SPECS AND MORE DETAILS
SCAN NOW





GC SYNERGY POLO

Mens - Product Code: **GMMX8**



Ladies - Product Code: **GLMX8**



Red/black



Navy/white



Lime/navy

FABRIC: Polyester pique knit

ADULT SIZES: S - M - L - XL - 2XL - 3XL - 4XL - 5XL

FEATURES:

- High quality moisture management fabric for maximum breathability and coolness
- Contrasting trim on collar, neck binding and sleeves
- Creates a cool, dry zone next to the skin
- Dries quickly through evaporation
- Crease resistant



FOR SPECS AND MORE DETAILS
SCAN NOW





GC MATRIX POLO

Mens - Product Code: **GMMX7**



Ladies - Product Code: **GLMX7**



Black/grey

Orange/grey

Royal/grey

FABRIC: Polyester pique knit

ADULT SIZES: S - M - L - XL - 2XL - 3XL - 4XL - 5XL

FEATURES:

- High quality moisture management fabric for maximum breathability and coolness
- Contrasting plaquet and neck binding
- Creates a cool, dry zone next to the skin
- Dries quickly through evaporation
- Crease resistant



FOR SPECS AND MORE DETAILS
SCAN NOW



CLASSIC MICRODOT POLO



Product Code: **SIE8** **CLASSIC FIT**

FABRIC: Cotton poly microdot - 180g

ADULT SIZES: S - M - L - XL - 2XL - 3XL - 4XL - 5XL

FEATURES:

- Classic, colourfast surface interest fabric produced from top quality yarns
- Contrast collar tip and piping on sleeves
- Engraved matching buttons
- Pockets on request



FOR SPECS AND MORE DETAILS
SCAN NOW



WORKWEAR



TUFF-IT[®]



CLASSIC HIGH VISIBILITY T-SHIRT

Fluorescent orange



Fluorescent yellow



Matching high visibility caps
Product code: CMK3 - Page 186

Product Code: **STS2**

FABRIC: Poly eyelet

ADULT SIZES: S - M - L - XL - 2XL - 3XL

FEATURES:

- Dries quickly through evaporation
- Creates a cool, dry zone next to the skin
- High quality poly eyelet fabric for maximum breathability and coolness



FOR SPECS AND MORE DETAILS
SCAN NOW



HIGH VISIBILITY T-SHIRT

Fluorescent yellow



Fluorescent orange



Reflective trim detail

Product Code: **STS1**

FABRIC: Poly eyelet

ADULT SIZES: S - M - L - XL - 2XL - 3XL

FEATURES:

- Dries quickly through evaporation
- Highly reflective tape for night visibility
- Creates a cool, dry zone next to the skin
- High quality poly eyelet fabric for maximum breathability and coolness



FOR SPECS AND MORE DETAILS
SCAN NOW



HIGH VISIBILITY GOLFER



Matching high visibility caps
Product code: CMK3 - Page 186

Fluorescent yellow



Fluorescent orange



Product Code: **HVG1**

FABRIC: Polyester interlock

ADULT SIZES: S - M - L - XL - 2XL - 3XL

FEATURES:

- Dries quickly through evaporation
- Contrasting buttons to match raglan trim
- High quality polyester interlock with moisture management properties
- Raglan trim on front and back made from highly reflective tape for night visibility



FOR SPECS AND MORE DETAILS
SCAN NOW



FREEZER JACKET



Zip away hood



Black



Navy

Product Code: **FJK1**

FABRIC: Water resistant oxford nylon

ADULT SIZES: S - M - L - XL - 2XL - 3XL

FEATURES:

- Zip away hood
- Stand up collar
- Elasticated cuffs
- Hand slot behind front pocket
- Padded for warmth and insulation

TUFF-IT



FOR SPECS AND MORE DETAILS
SCAN NOW



TUFF-IT[®]



ALL WEATHER FLUORESCENT JACKET

Fluorescent yellow



Matching high visibility caps
Product code: CMK3 - Page 186



Zip away hood



Product Code: **HVJ4**

FABRIC: Water resistant nylon with towelling lining

ADULT SIZES: S - M - L - XL - 2XL - 3XL

FEATURES:

- Chunky durable zip
- Superior quality coated nylon
- Hem with drawstring and toggles
- High quality inner towelling lining for warmth
- Zip away hood



FOR SPECS AND MORE DETAILS
SCAN NOW



HIGH VISIBILITY JACKET

Fluorescent yellow



Zip away hood



Fluorescent orange



Reflective trim detail

Product Code: **HVJ1**

FABRIC: Water resistant nylon with towelling lining

ADULT SIZES: S - M - L - XL - 2XL - 3XL

FEATURES:

- Chunky durable zip
- Superior quality coated nylon
- Hem with drawstring and toggles
- High quality inner towelling lining for warmth
- Highly reflective tape for night visibility
- Zip away hood



FOR SPECS AND MORE DETAILS
SCAN NOW



TUFF-IT[®]



HIGH VISIBILITY PARKA JACKET

Fluorescent yellow



Fluorescent orange



Matching high visibility caps
Product code: CMK3 - Page 186



Zip away hood



Product Code: **HVJ2**

FABRIC: Water resistant oxford nylon with reflective tape

ADULT SIZES: S - M - L - XL - 2XL - 3XL

FEATURES:

- Stand up collar
- Hand slot behind front pockets
- Padded for warmth and insulation
- Highly reflective tape for night visibility



FOR SPECS AND MORE DETAILS
SCAN NOW



HIGH VISIBILITY SPARK JACKET

Fluorescent yellow



Zip away hood



Product Code: **HVJ3**

FABRIC: Water resistant oxford nylon with reflective tape

ADULT SIZES: S - M - L - XL - 2XL - 3XL

FEATURES:

- Stand up collar
- Internal and external pockets
- Padded for warmth and insulation
- Highly reflective tape for night visibility



FOR SPECS AND MORE DETAILS
SCAN NOW



HIGH VISIBILITY CAP



Velcro fastener



Top view

Product Code: **CMK3**

FABRIC: Polyester and cotton

ADULT SIZES: One size fits all

FEATURES:

- Durable plastic inner to retain peak shape
- Contrast reflective trim for night visibility

MATCHING OPTIONS



High Vis Golfer
- page 180



Classic High Vis T-Shirt
- page 178



High Vis Parka Jacket
- page 184



High Vis T-Shirt
- page 178



High Vis Spark Jacket
- page 184



High Vis Jacket
- page 182



All Weather Fluorescent Jacket
- page 182



FOR SPECS AND MORE DETAILS
SCAN NOW



SERVICE COLLECTION





WAIST APRON

Black



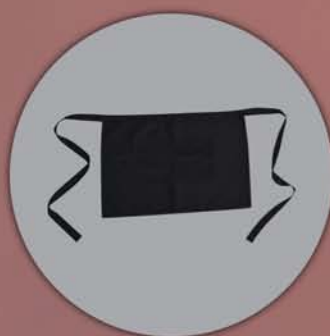
Product Code: **APD3**

FABRIC: Polycotton twill

ADULT SIZES: One size fits all

FEATURES:

- Back ties
- Durable heavy duty fabric
- Double front pockets with reinforced stitching



FOR SPECS AND MORE DETAILS
SCAN NOW



BIB APRON

Black Navy Red White Denim



Product Code: **APD4**

FABRIC: Polycotton twill

ADULT SIZES: One size fits all

FEATURES:

- Back ties
- Durable heavy duty fabric
- Double front pockets with reinforced stitching



FOR SPECS AND MORE DETAILS
SCAN NOW





WAITER'S APRON



Black

Product Code: **APD201**

FABRIC: Polycotton twill

ADULT SIZES: One size fits all

FEATURES:

- Back ties
- Durable heavy duty fabric
- Double front pockets with reinforced stitching



Back ties

FOR SPECS AND MORE DETAILS
SCAN NOW



UTILITY APRON



Black

Navy

Red

White

Denim

Product Code: **APD202**

FABRIC:

Polycotton twill (Red, black, navy, white); Blue denim

ADULT SIZES: One size fits all

FEATURES:

- Adjustable neck strap
- Durable heavy duty fabric
- Double front pockets with reinforced stitching



Adjustable neck strap



Back ties

FOR SPECS AND MORE DETAILS
SCAN NOW



VANGARD[®]

DUCHESS[®]



SERVICE COVERALLS

Mens - Product Code: **ALT2KTN** - Alex Scrub Top | **CLR4KTN** - Clark Scrub Pants



Ladies - Product Code: **LET2KTN** - Lexie Scrub Top | **TEP4KTN** - Terry Scrub Pants



FABRIC: KOOLTRON polycotton

ADULT SIZES:

Alex Scrub Top: XS - S - M - L - XL - 2XL - 3XL - 4XL - 5XL

Clark Scrub Pants: 28 - 30 - 32 - 34 - 36 - 38 - 40 - 42 - 44

Lexie Scrub Top & Terry Scrub Pants: 28 - 30 - 32 - 34 - 36 - 38 - 40 - 42 - 44 - 46 - 48 - 50 - 52 - 54

FEATURES:

- Multiple pockets on all garments
- High quality KOOLTRON polycotton fabric
- ALEX and LEXIE have a comfortable V-neck design
- CLARK and TERRY have an elasticated waist for comfort and is ideal for most body types

FOR SPECS AND MORE DETAILS
SCAN NOW



DUCHESS[®]



FRANCES DRESS



Product Code: **FRD2KTN**

FABRIC: KOOLTRON polycotton

ADULT SIZES:

28 - 30 - 32 - 34 - 36 - 38 - 40 - 42 - 44 - 46 - 48 - 50 - 52 - 54

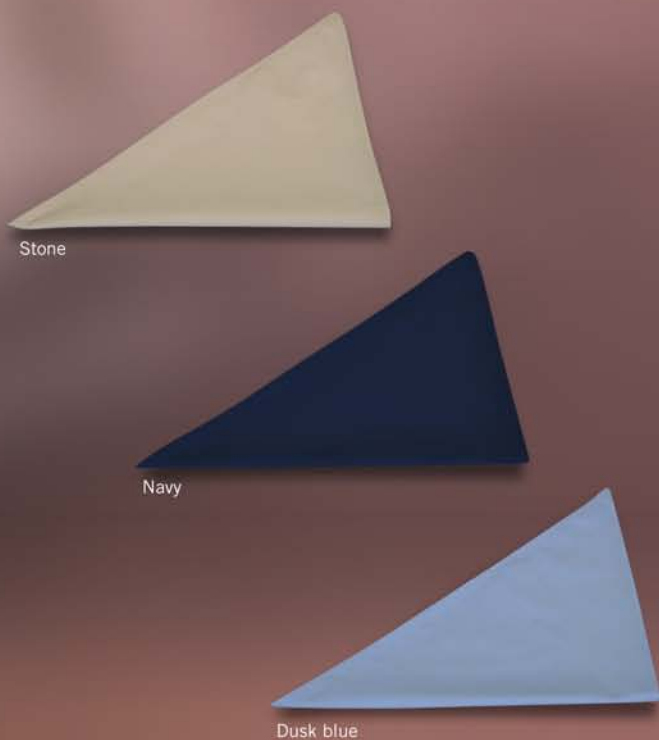
FEATURES:

- Tapered panels
- Turn back cuffs on sleeves
- Engraved DUCHESS buttons
- Handy side pockets and a left breast pocket
- Designed with hospitality, service, medical and cleaning industries in mind

FOR SPECS AND MORE DETAILS
SCAN NOW



HEAD SCARF



Stone

Navy

Dusk blue

Product Code: **DOH1KTN**

FABRIC: KOOLTRON polycotton

ADULT SIZES: One size fits all

FEATURES:

- Promotes hygiene
- Complements the FRANCES DRESS

DIMENSIONS:



FOR SPECS AND MORE DETAILS
SCAN NOW



CINDY COVERALL



Product Code: **CIA1MST**

FABRIC: Mini matt - 100% polyester

ADULT SIZES:

XS - S - M - L - XL - 2XL - 3XL - 4XL - 5XL

FEATURES:

- Handy front pockets
- Engraved DUCHESS buttons
- Bound edges for a neat finish
- Protects uniforms and is ideal for medical, service and promotional use



FOR SPECS AND MORE DETAILS
SCAN NOW



MEDICAL COLLECTION



DUCHESS[®]

VANGARD[®]



TONY UNISEX COAT



Product Code: **TOT2KTN** - Short sleeve
TOT4KTN - Long sleeve

FABRIC: KOOLTRON polycotton

ADULT SIZES:
2XS - XS - S - M - L - XL - 2XL - 3XL - 4XL - 5XL

- FEATURES:
- Box pleat in back
 - High quality KOOLTRON polycotton
 - Roomy side pockets and left breast pocket



FOR SPECS AND MORE DETAILS
SCAN NOW



BEAUTY TOP



Product Code: **BET2KTN**

FABRIC: KOOLTRON polycotton

ADULT SIZES:
28 - 30 - 32 - 34 - 36 - 38 - 40 - 42 - 44 - 46 - 48 - 50 - 52 - 54

- FEATURES:
- Classy engraved DUCHESS buttons
 - Left breast pocket and roomy side pockets
 - Side slits for comfort and ease of movement
 - High quality KOOLTRON polycotton

FOR SPECS AND MORE DETAILS
SCAN NOW



VANGARD[®]



SIMON UNISEX COAT



Product Code: **SIT4KTN**

FABRIC: KOOLTRON polycotton

ADULT SIZES: 2XS - XS - S - M - L - XL - 2XL - 3XL - 4XL - 5XL

FEATURES:

- Longer length
- Back slit for ease of movement
- Side pockets and left breast pocket
- High quality KOOLTRON polycotton
- Ideal as a medical, lab or dust coat

FOR SPECS AND MORE DETAILS
SCAN NOW



BARRY UNISEX COAT



Product Code: **BRT2KTN**

FABRIC: KOOLTRON polycotton

ADULT SIZES: 2XS - XS - S - M - L - XL - 2XL - 3XL - 4XL - 5XL

FEATURES:

- Stud fasteners
- Double chest and side pockets
- Ideal as a medical, lab or dust coat
- High quality KOOLTRON polycotton

FOR SPECS AND MORE DETAILS
SCAN NOW



FRANCES DRESS



The CINDY coverall
complements the Frances Dress:
Code: CIA1 - page 196



Product Code: **FRD2KTN**

FABRIC: KOOLTRON polycotton

ADULT SIZES:

28 - 30 - 32 - 34 - 36 - 38 - 40 - 42 - 44 - 46 - 48 - 50 - 52 - 54

FEATURES:

- Tapered panels
- Turn back cuffs on sleeves
- Engraved DUCHESS buttons
- Handy side pockets and a left breast pocket
- Designed with hospitality, service, medical and cleaning industries in mind



FOR SPECS AND MORE DETAILS
SCAN NOW




DUCHESS

RINA DRESS



Gathered shoulders with loops and buttons for epaulette fitment

Sky/navy



Product Code: **RID2MST**

FABRIC: Mini matt - 100% polyester


ADULT SIZES:

28 - 30 - 32 - 34 - 36 - 38 - 40 - 42 - 44 - 46 - 48 - 50 - 52 - 54

FEATURES:

- Ideal nurse uniform
- Piping detail and side pockets
- Conservative below-knee length
- Overlapping double button-up style



DUCHESS 



FOR SPECS AND MORE DETAILS
SCAN NOW



DUCHESS[®]



UDINE TOP



Product Code: **UDT2MST**

FABRIC: Mini matt - 100% polyester

ADULT SIZES:

28 - 30 - 32 - 34 - 36 - 38 - 40 - 42 - 44 - 46 - 48 - 50 - 52 - 54

FEATURES:

- Piping detail
- Pleated shoulder design
- Left breast pocket and roomy side pockets
- Side slits for comfort and ease of movement



FOR SPECS AND MORE DETAILS
SCAN NOW



BARBARA TOP



Product Code: **BAT2MST**

FABRIC: Mini matt - 100% polyester

ADULT SIZES:

28 - 30 - 32 - 34 - 36 - 38 - 40 - 42 - 44 - 46 - 48 - 50 - 52 - 54

FEATURES:

- Piping detail
- Fitted shoulder pads
- Panelled to create a flattering shape
- Left breast pocket and roomy side pockets
- Side slits for comfort and ease of movement



FOR SPECS AND MORE DETAILS
SCAN NOW



DUCHESS[®]

VANGARD[®]



SCRUBS

Mens - Product Code: **ALT2KTN** - Alex Scrub Top | **CLR4KTN** - Clark Scrub Pants



Ladies - Product Code: **LET2KTN** - Lexie Scrub Top | **TEP4KTN** - Terry Scrub Pants



FABRIC: KOOLTRON polycotton

ADULT SIZES:

Alex Scrub Top: XS - S - M - L - XL - 2XL - 3XL - 4XL - 5XL

Clark Scrub Pants: 28 - 30 - 32 - 34 - 36 - 38 - 40 - 42 - 44

Lexie Scrub Top & Terry Scrub Pants: 28 - 30 - 32 - 34 - 36 - 38 - 40 - 42 - 44 - 46 - 48 - 50 - 52 - 54

FEATURES:

- Multiple pockets on all garments
- High quality KOOLTRON polycotton fabric
- ALEX and LEXIE have a comfortable V-neck design
- CLARK and TERRY have an elasticated waist for comfort and is ideal for most body types

Matching theatre caps available
Product code: THH1KTN, Page: 208



FOR SPECS AND MORE DETAILS
SCAN NOW



THEATRE CAP



Dusk blue



White



Black



Navy



Product Code: **THH1KTN**

FABRIC: KOOLTRON polycotton

ADULT SIZES: One size fits all

FEATURES:

- Tiebacks for easy adjustment
- High quality KOOLTRON polycotton fabric



FOR SPECS AND MORE DETAILS
SCAN NOW



CHEF COLLECTION



STANLEY CHEF TOP



French cuff on long sleeve



Black



White



Product Code: **STT2KTN** - Short Sleeve
STT4KTN - Long Sleeve

FABRIC: KOOLTRON polycotton

ADULT SIZES: 2XS - XS - S - M - L - XL - 2XL - 3XL - 4XL - 5XL

FEATURES:

- Mandarin chef collar
- Double layered front design provides an extra layer of protection from hot oils
- Front layer fold can be reversed to adjust buttoning left over right or right over left
- Plastic chef buttons are customizable - black, red and white buttons are available on request. Button code: BCH



FOR SPECS AND MORE DETAILS
SCAN NOW



GORDON CHEF TOP



Utility pocket on sleeve



Product Code: **G CJ1**

FABRIC: KOOLTRON polycotton

ADULT SIZES:
2XS - XS - S - M - L - XL - 2XL - 3XL - 4XL - 5XL

- FEATURES:
- French cuffs
 - Mandarin chef collar
 - Utility pocket on sleeve
 - Double layered front design provides an extra layer of protection from hot oils
 - Front layer can be reversed to adjust buttoning left over right or right over left


VANGARD



FOR SPECS AND MORE DETAILS
SCAN NOW



CLARK & TERRY PANTS



CLARK SCRUB PANTS - CLR4KTN



TERRY SCRUB PANTS - TEP4KTN



Black

White

Product Code: **CLR4KTN** - Clark Pants
TEP4KTN - Terry Pants

FABRIC: KOOLTRON polycotton

CLARK PANTS SIZES:
28 - 30 - 32 - 34 - 36 - 38 - 40 - 42 - 44

TERRY PANTS SIZES:
28 - 30 - 32 - 34 - 36 - 38 - 40 - 42 - 44 - 46 - 48 - 50 - 52 - 54

FEATURES:

- Side pockets
- Elasticated waist
- High quality KOOLTRON polycotton
- Complements the Stanley and Gordon Chef Top



FOR SPECS AND MORE DETAILS
SCAN NOW



JAMIE CHEF PANTS



Black/white



Check design



Navy/white



Product Code: **JAR4C8Y**

FABRIC: Yarn dyed polycotton

ADULT SIZES:

28 - 30 - 32 - 34 - 36 - 38 - 40 - 42 - 44

FEATURES:

- Elasticated waist
- Side pockets and back pocket
- High quality yarn dyed polycotton fabric
- Complements the Stanley and Gordon chef top

VANGARD 



FOR SPECS AND MORE DETAILS
SCAN NOW



CULINARY HEADWEAR

VANGARD

Our range of culinary headwear options complete your chef outfit and are made from KOOLTRON polycotton which match the STANLEY and GORDON chef tops.

FABRIC: KOOLTRON polycotton

ADULT SIZES: One size fits all



CHEF HAT

Product Code: **CHH1KTN**

FEATURES:

- Adjustable velcro opening for the perfect fit



White



Black

FOR SPECS AND MORE DETAILS
SCAN NOW



BAKERY HAT

Product Code: **BAH1KTN**

FEATURES:

- Elasticated insert
- Comfortable fit



White



Black

FOR SPECS AND MORE DETAILS
SCAN NOW



DELI CAP

Product Code: **DEH1KTN**

FEATURES:

- Peak with pleated crown
- Elasticated back for the perfect fit



White



Black

FOR SPECS AND MORE DETAILS
SCAN NOW



BEAUTY COLLECTION



CHELSEA TOP



Product Code: **CHT2MST** - White, stone, navy, black
CHT2MEL - Charcoal

FABRIC: Mini matt - 100% polyester

ADULT SIZES:
28 - 30 - 32 - 34 - 36 - 38 - 40 - 42 - 44 - 46 - 48 - 50 - 52 - 54

- FEATURES:
- Back zip
 - Side slits for ease of movement
 - Elegant teardrop design with self fabric buttons
 - High quality mini matt fabric with wash & wear properties



FOR SPECS AND MORE DETAILS
SCAN NOW



216 | BEAUTY COLLECTION

DUCHESS 

LILY TOP



Product Code: **LIT2**

FABRIC: Lightweight mini matt - 100% polyester
(Black is slightly heavier in weight)

ADULT SIZES:
28 - 30 - 32 - 34 - 36 - 38 - 40 - 42 - 44 - 46 - 48 - 50 - 52 - 54

- FEATURES:
- Elegant square neck
 - Free from zips or buttons
 - Side slits for comfort and ease of movement
 - High quality mini matt fabric with wash & wear properties




DUCHESS



FOR SPECS AND MORE DETAILS
SCAN NOW





LUCY TOP



Product Code: **LUT2MST**

FABRIC: Mini matt - 100% polyester

ADULT SIZES:

28 - 30 - 32 - 34 - 36 - 38 - 40 - 42 - 44 - 46 - 48 - 50 - 52 - 54

FEATURES:

- Elegant oriental design with piping
- Mandarin collar and fabric buttons
- Enhance your logo with bright trim finishes
- High quality mini matt fabric with wash & wear properties



FOR SPECS AND MORE DETAILS
SCAN NOW



MADRI TOP



Product Code:

MAT2MST - Black, Navy/white, Black/white, White

MAT2MEL - Charcoal, Charcoal/black

FABRIC: Mini matt - 100% polyester

ADULT SIZES:

28 - 30 - 32 - 34 - 36 - 38 - 40 - 42 - 44 - 46 - 48 - 50 - 52 - 54

FEATURES:

- Back darts for a feminine fit
- Side slits for ease of movement
- Elegant piping and oriental design
- High quality mini matt fabric with wash & wear properties



FOR SPECS AND MORE DETAILS
SCAN NOW



NICOLE TOP



Product Code: **NIT2MST**

FABRIC: Mini matt - 100% polyester

ADULT SIZES:

28 - 30 - 32 - 34 - 36 - 38 - 40 - 42 - 44 - 46 - 48 - 50 - 52 - 54

FEATURES:

- Elegant piping
- Mandarin collar
- Self fabric buttons
- Side slits for ease of movement
- High quality mini matt fabric with wash & wear properties



FOR SPECS AND MORE DETAILS
SCAN NOW



HEADWEAR



CLASSIC FIVE PANEL POLYESTER CAP



Product Code: **CMP1**

FABRIC: Polyester

ADULT SIZES: One size fits all

FEATURES:

- Durable plastic inner to retain peak shape
- Embroidered eyelets for ventilation and styling
- Quality polyester for durability and strength

FOR SPECS AND MORE DETAILS
SCAN NOW



CLASSIC FIVE PANEL COTTON CAP



Product Code: **CMK201**

FABRIC: 100% Cotton

ADULT SIZES: One size fits all

FEATURES:

- Embroidered eyelets for ventilation and styling
- Durable plastic inner to retain peak shape
- Superior quality cotton fabrics used for coolness, durability and strength

FOR SPECS AND MORE DETAILS
SCAN NOW



CLASSIC SIX PANEL COTTON CAP



White



Black



Bottle



Beige



Lime



Yellow



Sky



Orange



Royal



Red



Navy



Maroon

Product Code: **CMK202**

FABRIC: Brushed bull denim

ADULT SIZES: One size fits all

FEATURES:

- Embroidered eyelets for ventilation and styling
- Durable plastic inner to retain peak shape
- Superior quality cotton fabrics used for coolness, durability and strength

FOR SPECS AND MORE DETAILS
SCAN NOW



SANDWICH PEAK CAP



Royal/white



Combat/black



Black/white



Red/white



Navy/white



Product Code: **CMK205**

FABRIC: Brushed bull denim

ADULT SIZES: One size fits all

FEATURES:

- Contrast trim on peak
- Embroidered eyelets for ventilation and styling
- Durable plastic inner to retain peak shape
- Superior quality cotton fabrics used for coolness, durability and strength

FOR SPECS AND MORE DETAILS
SCAN NOW



HEAVY DUTY CAP



Product Code: **CMK228**

FABRIC: Acrylic wool

ADULT SIZES: One size fits all

FEATURES:

- Embroidered eyelets for ventilation and styling
- Durable plastic inner to retain peak shape
- Highly durable acrylic fabric with superior resistance to fading



Velcro fastener



FOR SPECS AND MORE DETAILS
SCAN NOW



SPANDEX FLAT BILL CAP



Product Code: **CMF1**

FABRIC: 100% Polyester

ADULT SIZES: One size fits all

FEATURES:

- Durable plastic inner to retain peak shape
- Embroidered eyelets for ventilation and styling
- Durable polyester fabric with resistance to fading
- Snap back

Adjustable snap back:



FOR SPECS AND MORE DETAILS
SCAN NOW



CAMO CAP



Bush camo
(Note: style has variations of pattern)



Classic camo
(Note: style has variations of pattern)

Velcro fastener



Product Code: **CMK229** - Classic camo
CMK230 - Bush camo

FABRIC: Cotton twill

ADULT SIZES: One size fits all

FEATURES:

- Embroidered eyelets for ventilation and styling
- Durable plastic inner to retain peak shape
- Superior quality cotton fabrics used for coolness, durability and strength



CUBAN CAMO CAP



Bush camo
(Note: style has variations
of pattern)



Digital camo
(Note: style has variations
of pattern)

Product Code: **CMK4** - Bush camo
CMK5 - Digital camo

FABRIC: 100% Cotton

ADULT SIZES: One size fits all

FEATURES:

- Durable plastic inner to retain peak shape
- Embroidered eyelets for ventilation and styling
- Superior quality cotton fabrics used for coolness, durability and strength

FOR SPECS AND MORE DETAILS
SCAN NOW



HIGH VISIBILITY CAP



Velcro fastener



Top view

Product Code: **CMK3**

FABRIC: Polyester and cotton

ADULT SIZES: One size fits all

FEATURES:

- Durable plastic inner to retain peak shape
- Contrast reflective trim for night visibility

MATCHING OPTIONS



High Vis Golfer
- page 180



Classic High Vis T-Shirt
- page 178



High Vis Parka Jacket
- page 184



High Vis T-Shirt
- page 178



High Vis Spark Jacket
- page 184



High Vis Jacket
- page 183



All Weather Fluorescent
Jacket - page 183



FOR SPECS AND MORE DETAILS
SCAN NOW



KNITTED BEANIES



Product Code: **BNV201**

FABRIC: Knitted - acrylic yarn

ADULT SIZES: One size fits all

FEATURES:

- Snug fit for warmth and comfort
- Top quality acrylic yarn for durability



FOR SPECS AND MORE DETAILS
SCAN NOW



POLAR FLEECE BEANIES



Black



Navy



Stone

Product Code: **BNV202**

FABRIC: Anti-pill polar fleece - 240g

ADULT SIZES: One size fits all

FEATURES:

- Anti-pill polar fleece traps heat for warmth
- Panelled with top stitching for reinforcement



FOR SPECS AND MORE DETAILS
SCAN NOW



BAGS



OGIO crunchduffel



This go-to travel and workout bag delivers bold colors, plenty of room and an athletic design that fits inside most gym lockers.

PRODUCT CODE: 108085

- Large main compartment
- Side shoe pocket
- Adjustable, padded shoulder strap
- Plastic-molded interlocking handle
- Front-faced zippered pocket
- Side storage pocket
- All metal hardware

SPECS

- DIMENSIONS: 13" h x 24" w x 12" d
- CAPACITY: 3,000 cu.in. / 41L
- WEIGHT: 0.7kg / 1.6 lbs.
- MATERIALS: 300D dobby nylon/600D poly



EASILY BRANDABLE



SHOE POCKET

FOR SPECS AND MORE DETAILS
SCAN NOW



OGIO all terrain duffel



Black



Seamlessly moves from the gym to the airport with a roomy, adventure-ready design that manages clothes, gadgets and shoes.

PRODUCT CODE: 711003

- Large U-shaped opening
- Ventilated side shoe pocket
- Front storage pocket with mesh dividers
- Fleece-lined valuables pocket
- Side storage pocket
- Plastic-molded interlocking handle
- Adjustable shoulder strap
- Reinforced base

SPECS

- DIMENSIONS: 11.75" h x 22" w x 9" d
- CAPACITY: 2,430 cu.in. / 40L
- WEIGHT: 1.4kg / 3.0 lbs.
- MATERIALS: 600D poly/420D doobby poly



EASILY BRANDABLE

AUDIO POCKET

SHOE POCKET

FOR SPECS AND MORE DETAILS
SCAN NOW



OGIO fugitivepack



Black



Heavy-duty construction lets this bag take years of use and abuse.

PRODUCT CODE: 711113

- Double-lined entry pack
- Internal padded laptop sleeve
- Integrated shoulder harness with neoprene grab handle
- Fleece-lined top drop-in audio pocket with headphone exit port
- Side mesh water bottle pockets
- Dual-side compression straps

SPECS

- DIMENSIONS: 19"h x 12"w x 10"d
- CAPACITY: 2,050 cu.in./33.6L
- WEIGHT: 0.9kg / 2.0 lbs.
- MATERIALS: 300D x 900D rhinoskin poly/600D poly
- LAPTOP SLEEVE: 12.5"h x 10.25"w x 2.5"d, fits most 15" laptops



HYDRATION POCKET



VENTILATION



KEY CLIP



PASSPORT



PENCIL STALL



EASILY BRANDABLE



AUDIO POCKET



LAPTOP SLEEVE



ORGANIZER PANEL



DIGITAL MEDIA



FOR SPECS AND MORE DETAILS
SCAN NOW



OGIO bullionbackpack



Black/silver



With a supersized main compartment, this pack opens wide to take on a laptop, files, folders and more.

PRODUCT CODE: 411064

- Large dual main compartments
- Back compartment padded laptop pocket
- Padded tablet/e-reader sleeve
- Front zippered pocket with key fob
- Fleece-lined valuables stash pockets
- Ergonomic shoulder straps
- Dual side beverage/accessory holsters
- Padded top grab handle

SPECS

- DIMENSIONS: 19" h x 13" w x 9" d
- CAPACITY: 1,900 cu.in. / 31L
- WEIGHT: 0.72kg / 1.6 lbs.
- MATERIALS: 420D dobby poly
- LAPTOP SLEEVE: 10.5" h x 15.5" w x 1.5" d, fits most 17" laptops



EASILY BRANDABLE



LAPTOP SLEEVE



DIGITAL MEDIA



KEY CLIP



HYDRATION POCKET

FOR SPECS AND MORE DETAILS
SCAN NOW



OGIO voyagemessenger



Black



Explore new frontiers with this modern messenger that comes equipped with a checkpoint friendly flip-down laptop sleeve.

PRODUCT CODE: 117023

- Adjustable ergonomic shoulder strap
- Three computer accessory sleeve pockets
- Mid-sized main compartment
- Organizer panel with pen loops, padded external hard drive pocket, ID card pocket
- Front zippered pocket for small items
- Quick-access cell phone sleeve pocket on front of messenger flap
- Tube cushion padded handle system and ergonomic zippers
- Hidden magazine compartment between main compartment and laptop sleeve
- Pullman handle attachment sleeve

SPECS

- DIMENSIONS: 14" h x 17" w x 4" d
- CAPACITY: 952 cu.in./15.6L
- WEIGHT: 0.8kg / 1.8 lbs.
- MATERIALS: 1,680 Ballistic poly/600D poly/420D diamond dobby
- LAPTOP SLEEVE: 12" h x 16" w x 1.25" d, fits most 17" laptops



EASILY BRANDABLE

LAPTOP SLEEVE

AUDIO POCKET

CELL POCKET

POWER CORD POCKET

MOUSE POCKET



FILE STASH

ORGANIZER PANEL

POWER SOURCE

PASSPORT

PENCIL STALL

FOR SPECS AND MORE DETAILS
SCAN NOW



OGIO corporate citycorpmessenger



Petrol



Travel-savvy design ditches the bottomless-pit syndrome to keep multimedia organized and at the ready.

PRODUCT CODE: **711207**

- Padded top drop-in laptop sleeve
- Audio pocket with headphone exit port
- Cell phone pocket with cell lifter
- Adjustable padded shoulder strap
- Pullman handle attachment sleeve
- Organizer panel
- Palm/calculator pocket
- Internal file separators

SPECS

- DIMENSIONS: 13"h x 18"w x 6"d
- CAPACITY: 1,500 cu.in. / 24.6L
- WEIGHT: 1.6kg / 3.42 lbs.
- MATERIALS: 600D poly/420D dobby poly
- LAPTOP SLEEVE: 11"h x 17"w x 2"d, fits most 15" laptops



- FILE STASH
- TRAVEL ESSENTIALS
- ORGANIZER PANEL
- PASSPORT
- PENCIL STALL



- EASILY BRANDABLE
- LAPTOP SLEEVE
- DIGITAL MEDIA
- AUDIO POCKET
- CELL POCKET

FOR SPECS AND MORE DETAILS
SCAN NOW





Inner thermal foil



THERMAL CARRIER - SMALL



Product Code: **THC1**

FABRIC: 100% Polypropylene

DIMENSIONS: 220mm x 135mm x 180mm

FEATURES:

- Heat sealed inner thermal foil bag
- Single handle with reinforced box stitch
- Laminated foil lid with durable zip enclosure
- Made from superior quality, heavy duty polypropylene allowing bag to be used time and time again

FOR SPECS AND MORE DETAILS
SCAN NOW



THERMAL CARRIER - LARGE



Product Code: **THC2**

FABRIC: 100% Polypropylene

DIMENSIONS: 305mm x 338mm x 210mm

FEATURES:

- Heat sealed inner thermal foil bag
- Single handle with reinforced box stitch
- Laminated foil lid with durable zip enclosure
- Made from superior quality, heavy duty polypropylene allowing bag to be used time and time again

FOR SPECS AND MORE DETAILS
SCAN NOW



SHOPPER BAG



Sea green



Black



Navy



Red



Yellow

Product Code: **SHP2**

FABRIC: 100% Polypropylene

DIMENSIONS: 330mm x 375mm x 210mm

FEATURES:

- Double handles with reinforced box stitch
- Made from superior quality, heavy duty polypropylene allowing these bags to be used time and time again.



FOR SPECS AND MORE DETAILS
SCAN NOW



PRODUCT ICONS EXPLAINED



A superior quality dyeing process ensures brighter colours and prevents fibers from weakening during the printing process



Garments require little or no ironing and are often crease resistant



The garment contains breathable moisture management fabric which wicks perspiration from the skin to the outer surface and dries quickly through evaporation



The garment contains fluorescent colours and/or reflective tape to increase visibility



A process where the shorter cotton fibres are discarded and impurities removed, making the yarn stronger, smoother, softer and more compact



Fabric offers multi-dimensional stretch allowing flexibility and a more tailored fit



Fabric has water resistant properties



Fabric has wind resistant properties



Product offers superior resistance to fading

CODE INDEX

JACKETS

STYLE	DESCRIPTION	PAGE
LSS1	Ladies Classic Softshell Jacket	3
MSS1	Classic Softshell Jacket	3
LFS1	Ladies Fusion Softshell Jacket	5
MFS1	Fusion Softshell Jacket	5
GLSS2	Ladies Zip Off Sleeve Softshell Jacket	7
GMSS2	Zip Off Sleeve Softshell Jacket	7
LBW1	Ladies Bodywarmer	9
MBW1	Bodywarmer	9
MPJ1	Zip Off Sleeve Puffer Jacket	11
LPJ1	Ladies Zip Off Sleeve Puffer Jacket	11
LAWJ3	Ladies Tech All Weather Jacket	13
AWJ3	Tech All Weather Jacket	13
AWJ202	All Weather Macjack	15
KAW202	Youth All Weather Macjack	16
APJ1	Apex Jacket	17
PJU202	Padded Parka Jacket	18

FLEECE

STYLE	DESCRIPTION	PAGE
LPM201	Ladies Classic Microfibre Polar Fleece	21
PFM3	Classic Microfibre Polar Fleece	21
BLJ4	Belle Fleece - Long Sleeve	23
BMJ4	Beau Fleece - Long Sleeve	23
LFQ3	Ladies Zip Off Sleeve Polar Fleece	25
PFQ203	Zip Off Sleeve Polar Fleece	25
PFH2	Classic Hoodie	27
LFH2	Ladies Classic Hoodie	27
PFH3	Classic Zip Up Hoodie	29
LFH3	Ladies Classic Zip Up Hoodie	29
LFH1	Ladies Zip Up Fleece Hoodie	31
PFH1	Zip Up Fleece Hoodie	31
BLJ1	Belle Fleece - Sleeveless	33
BMJ1	Beau Fleece - Sleeveless	33
PFM201	Double-sided Microfibre Polar Fleece	34
PFM202	Two-tone Microfibre Polar Fleece	35
PFM205	Sleeveless Microfibre Polar Fleece	36
PFT201	Lightweight Polar Fleece	37
BNV203	Polar Fleece Scarves	39
BNV204	Polar Fleece Gloves	39
BNV202	Polar Fleece Beanies	39
KQZ1	Youth Quarter Zip Fleece	40

KNITWEAR

STYLE	DESCRIPTION	PAGE
LKC1	Ladies Classic Cardigan	43
JRI201	Classic Sleeveless Jersey	43
JRI202	Classic Long Sleeve Jersey	43
KEJ4KNI	Kelly Cardigan	45
NIJ4KNI	Nina Cardigan	45
JRI5	Sleeveless Upmarket Jersey	46
JRI6	Long Sleeve Upmarket Jersey	46

FORMAL WEAR

STYLE	DESCRIPTION	PAGE
PAW1MST	Paula Waistcoat	49
PAW1MEL	Paula Waistcoat	49
JOW1MST	John Waistcoat	49
JOW1MEL	John Waistcoat	49
FRJ1MST	Freya Gilet	51
FRJ1MEL	Freya Gilet	51
ROJ2MST	Rosa Jacket Short Sleeve	51
ROJ4MST	Rosa Jacket - Long Sleeve	53
ROJ4MEL	Rosa Jacket - Long Sleeve	53
ROJ4SPV	Rosa Stripe Jacket - Long Sleeve	53
PEJ4MST	Peter Men's Suit Jacket - Long Sleeve	53
PEJ4MEL	Peter Men's Suit Jacket - Long Sleeve	53
JAD1MST	Formal Dresses	54
JAD1MEL	Formal Dresses	54

PANTS & TROUSERS

STYLE	DESCRIPTION	PAGE
LBT1	Ladies Bengaline Pants	56
PVT3	Classic Trousers	57
PAP4MST	Patricia Pants	59
PAP4MEL	Patricia Pants	59
PAP4SPV	Patricia Stripe Pants	59
PHR4MST	Phillip Trousers	59
PHR4MEL	Phillip Trousers	59
BEP4MST	Berlei Pants	61
BEP4MEL	Berlei Pants	61

PANTS & TROUSERS

STYLE	DESCRIPTION	PAGE
TEP4MST	Terry Pants	61
SAP4MST	Salis Pants	62
SAP4MEL	Salis Pants	62
ELP1	Ella Pants	63
LJF1	Ladies Denim Jeans	65
JFP1	Classic Denim Jeans	65
CPF3	Chinos	66
CPF4	5 Pocket Chinos	67
TEP4KTN	Terry Scrub Pants	68
CLR4KTN	Clark Scrub Pants	68

SKIRTS & DRESSES

STYLE	DESCRIPTION	PAGE
AVZ1	Ava Skirt	70
DIA1	Diana Skirt	71
DI26MST	Didi Skirt - 60cm	73
DI26MEL	Didi Skirt - 60cm	73
DI28MST	Didi Skirt - 80cm	73
DI28MEL	Didi Skirt - 80cm	73
LI26MST	Lize Skirt - 60cm	74
LI26MEL	Lize Skirt - 60cm	74
JAD1MST	Jane Dress	75
JAD1MEL	Jane Dress	75
CLD1	Claire Dress	76
SAR1	Sarah Dress	77
FRD2KTN	Frances Dress	78
RID2MST	Rina Dress	78

SHIRTS & BLOUSES

STYLE	DESCRIPTION	PAGE
LWS8	Ladies Icon Woven Shirt - 3/4	81
MWS8	Icon Woven Shirt - S/S	81
MWS9	Icon Woven Shirt - L/S	81
LWC201	Ladies Woven Prime Shirt - 3/4	83
WSC202	Woven Prime Shirt - S/S	83
WSC203	Woven Prime Shirt - L/S	83
LWS1	Ladies Classic Woven Shirt - S/S	85
LWS2	Ladies Classic Woven Shirt - L/S	85
MWS1	Classic Woven Shirt - S/S	85
MWS2	Classic Woven Shirt - L/S	85
ROB2OPC	Roselina Blouse - S/S	87
ROB3OPC	Roselina Blouse - 3/4	87
ROB4OPC	Roselina Blouse - L/S	87
CAS2OPC	Cameron Shirt - S/S	87
CAS4OPC	Cameron Shirt - L/S	87
ROB2C1	Roselina Blouse - Check Design 1 - S/S	89
ROB4C1	Roselina Blouse - Check Design 1 - L/S	89
MAS2C1	Matthew Shirt - Check Design 1 - S/S	89
MAS4C1	Matthew Shirt - Check Design 1 - L/S	89
DOB3C3	Donna Blouse - Check Design 3 - 3/4	91
CAS2C3	Cameron Shirt - Check Design 3 - S/S	91
CAS4C3	Cameron Shirt - Check Design 3 - L/S	91
DOB2S5	Donna Blouse - Stripe Design 5 - S/S	93
DOB4S5	Donna Blouse - Stripe Design 5 - L/S	93
CAS2S5	Cameron Shirt - Stripe Design 5 - S/S	93
CAS4S5	Cameron Shirt - Stripe Design 5 - L/S	93
ROB3S4	Roselina Blouse - Stripe Design 4 - 3/4	95
MAS2S4	Matthew Shirt - Stripe Design 4 - S/S	95
MAS4S4	Matthew Shirt - Stripe Design 4 - L/S	95
DOB3S8	Donna Blouse - Stripe Design 8 - 3/4	97
CAS2S8	Cameron Shirt - Stripe Design 8 - S/S	97
CAS4S8	Cameron Shirt - Stripe Design 8 - L/S	97
DOB3S6	Donna Blouse - Stripe Design 6 - 3/4	99
CAS2S6	Cameron Shirt - Stripe Design 6 - S/S	99
CAS4S6	Cameron Shirt - Stripe Design 6 - L/S	99
LWS5	Ladies Vertistripe Woven Shirt - S/S	101
LWS6	Ladies Vertistripe Woven Shirt - L/S	101
MWS5	Vertistripe Woven Shirt - S/S	101
MWS6	Vertistripe Woven Shirt - L/S	101
LWP1	Ladies Traction Pit Crew Shirt	103
MWP1	Traction Pit Crew Shirt	103
LWS7	Ladies Dynamic Woven Shirt	105
MWS7	Dynamic Woven Shirt	105
LBS2	Ladies Venture Bush Shirt	107
MBS2	Venture Bush Shirt	107
LBS1	Ladies Heavy Duty Bush Shirt	109
WSC201	Heavy Duty Bush Shirt	109
MBS3	Savannah Bush Shirt	110
WSC206	Heavy Duty Two-Tone Bush Shirt	111
PNB2SKO	Penny Blouse - Starburst Design - S/S	112
PNB4SKO	Penny Blouse - Starburst Design - L/S	112
JEB2DPK	Jessica Blouse	113
WSC204	Three-tone Small Check Shirt - S/S	114
WSC205	Three-tone Small Check Shirt - L/S	114

T-SHIRTS & TOPS

STYLE	DESCRIPTION	PAGE
CTB1CTB2	145g Promo T-shirt	116
CTH101201	145g Classic Cotton T-shirt	117
LTL1	150g Ladies Fashion Fit T-Shirt	119
CTL1	150g Fashion Fit T-Shirt	119
CTA1051205	170g Combed Cotton Long-sleeve T-shirt	121
CTA1031204	170g Combed Cotton T-Shirt	121
CTA1021202	150g Super Cotton T-shirt	122
KCT1021202	150g Youth Super Cotton T-shirt	122
CTA1061206	190g Super Cotton T-shirt	123
LTB3	Ladies V-Neck T-Shirt	124
CTV1ICTV2	170g Classic V-Neck T-Shirt	125
CTL4	150g Fashion Fit T-shirt - L/S	127
LTB4	150g Ladies Fashion Fit T-shirt - L/S	127
LVC201	Ladies Tank Top	128
LRB1	Ladies Racerback Top	129
CTF3	Edge T-Shirt	131
CTF4	Raglan Trim T-Shirt	131
MMT4	Classic Sports T-Shirt	132
KMT4	Youth Classic Sports T-Shirt	132

POLO & GOLF SHIRTS

STYLE	DESCRIPTION	PAGE
PKD201	Classic Pique Knit Polo	135
LPK2	Ladies Classic Pique Knit Polo	135
KPK2	Youth Classic Pique Knit Polo	135
PKD3	Long Sleeve Pique Knit Polo	136
MFP6	Raglan Trim Polo	137
GLFP8	Ladies Classic Heavy Weight Polo	139
GMFP8	Classic Heavy Weight Polo	139
GLFP9	Ladies Stratus Polo	141
GMFP9	Stratus Polo	141
GLFP10	Ladies Infinity Polo	143
GMFP10	Infinity Polo	143
LSB3	Ladies Raised Ridge Polo	145
MFP3	Raised Ridge Polo	145
LFP201	Ladies Contrast Trim Polo	147
MFP201	Contrast Trim Polo	147
LSB4	Ladies Trendy Polo	149
MFP4	Trendy Polo	149
LSB5	Ladies Flat Piping Polo	151
MFP5	Flat Piping Polo	151
CGU201	Jacquard Collar Golfer	152
MFP7	Statement Polo	153
LCG3	Ladies Pencil Stripe Golfer	155
CGU3	Pencil Stripe Golfer	155
LCG4	Ladies Epic Golfer	157
CGU4	Epic Golfer	157
LOG101	Ladies OGIO Jewel Polo	159
OG101	OGIO Calibre 2.0 Polo	159
LOG114	Ladies OGIO Gaze Polo	161
OG110	OGIO Optic Polo	161
LOG105	Ladies OGIO Glam Polo	163
OG107	OGIO O-boy Polo	163
OG106	OGIO Trax Polo	164
MMX201	Side Panelled Sports Polo	165
LSP1	Ladies Classic Sports Polo	167
MSP1	Classic Sports Polo	167
GLMX9	Ladies Vector Polo	169
GMMX9	Vector Polo	169
GLMX6	Ladies Legend Polo	171
GMMX6	Legend Polo	171
GLMX8	Ladies Synergy Polo	173
GMMX8	Synergy Polo	173
GLMX7	Ladies Matrix Polo	175
GMMX7	Matrix Polo	175
SIE8	Classic Microdot Polo	176

WORKWEAR

STYLE	DESCRIPTION	PAGE
STS2	Classic High Visibility T-Shirt	179
STS1	High Visibility T-Shirt	179
HVG1	High Visibility Golfer	180
FJK1	Freezer Jacket	181
HVJ4	All Weather Fluorescent Jacket	183
HVJ1	High Visibility Jacket	183
HVJ2	High Visibility Parka Jacket	185
HVJ3	High Visibility Spark Jacket	185
CMK3	High Visibility Cap	186

SERVICE COLLECTION

STYLE	DESCRIPTION	PAGE
APD3	Waist Apron	189
APD4	Bib Apron	189
APD201	Waiter's Apron	191

SERVICE COLLECTION

STYLE	DESCRIPTION	PAGE
APD202	Utility Apron	191
LET2KTN	Lexie Scrub top	193
TEP4KTN	Terry Scrub Pants	193
ALT2KTN	Alex Scrub Top	193
CLR4KTN	Clark Scrub Pants	193
FRD2KTN	Frances Dress	195
DOH1KTN	Head Scarf	195
CIA1MST	Cindy Coverall	196

MEDICAL COLLECTION

STYLE	DESCRIPTION	PAGE
BET2KTN	Beauty Top - Short Sleeve	199
TOT2KTN	Tony Unisex Coat - Short Sleeve	199
TOT4KTN	Tony Unisex Coat - Long Sleeve	199
SIT4KTN	Simon Unisex Coat - Long Sleeve	201
BRT2KTN	Barry Unisex Coat - Short Sleeve	201
FRD2KTN	Frances Dress	202
RID2MST	Rina Dress	203
UDT2MST	Udine Top	205
BAT2MST	Barbara Top	205
LET2KTN	Lexie Scrub top	207
TEP4KTN	Terry Scrub Pants	207
ALT2KTN	Alex Scrub Top	207
CLR4KTN	Clark Scrub Pants	207
THH1KTN	Theatre Cap Unisex	208

CHEF COLLECTION

STYLE	DESCRIPTION	PAGE
STT2KTN	Stanley Chef Top - Short Sleeve	210
STT4KTN	Stanley Chef Top - Long Sleeve	210
GCJ1	Gordon Chef Top	211
CLR4KTN	Clark Scrub Pants	212
TEP4KTN	Terry Scrub Pants	212
JAR4C8Y	Jamie Chef Pants	213
BAH1KTN	Bakery Hat	214
CHH1KTN	Chef Hat	214
DEH1KTN	Deli Cap	214

BEAUTY COLLECTION

STYLE	DESCRIPTION	PAGE
CHT2MST	Chelsea Top	216
CHT2MEL	Chelsea Top	216
LIT2	Lily Top	217
LUT2MST	Lucy Top	219
MAT2MST	Madri Top	219
MAT2MEL	Madri Top	219
NIT2MST	Nicole Top	220

HEADWEAR

STYLE	DESCRIPTION	PAGE
CMP1	Classic Five Panel Polyester Cap	222
CMK201	Classic Five Panel Cotton Cap	223
CMK202	Classic Six Panel Cap	224
CMK205	Sandwich Peak Cap	225
CMK228	Heavy Duty Cap	226
CMF1	Spandex Flat Bill Cap	227
CMK229	Classic Camo Cap	228
CMK230	Bush Camo Cap	228
CMK4	Bush Cuban Camo Cap	229
CMK5	Digital Cuban Camo Cap	229
CMK3	High Visibility Cap	230
BNV201	Knitted Beanies	231
BNV202	Polar Fleece Beanies	232

BAGS

STYLE	DESCRIPTION	PAGE
108085	OGIO Crunch Duffel	234
711003	OGIO All Terrain Duffel	235
711113	OGIO Fugitive Backpack	236
411064	OGIO Bullion Backpack	237
117023	OGIO Voyager Messenger	238
711207	OGIO Corporate City Corp Messenger	239
THC1	Thermal Carrier - Small	241
THC2	Thermal Carrier - Large	241
SHP1	Shopper Bag	242



THE 2018/19 LEADING BRAND COLLECTION

DUCHESS[®]

HIGHLAND BROOK[®]

GC GLOBAL
CITIZEN

100% COTTON
HB

VANGARD[®]

CAP
ADDICTION[®]
DON'T ADD TO THE BILL

TUFF-IT[®]

TEE &
COTTON[®]

Mac Jack[®]

MAC[⚡]
ALL WEATHER

Oakhurst[®]

OGIO

ULTIMATE
T

www.proactiveclothing.com